



VMware

VCXN610

VMware Certified Implementation Expert (R) Network Virtualization

QUESTION: 169

A company wants to deploy VMware NSX for vSphere with no PIM and no IGMP configured in the underlying physical network. This company also must ensure that non-ESXi hosts do not receive broadcast, unknown unicast or multicast (BUM) traffic. Which replication mode should the logical switches be deployed with?

- A. Unicast Replication Mode
- B. Multicast Replication Mode
- C. Hybrid Replication Mode
- D. Transport Zone Mode

Answer: A

QUESTION: 170

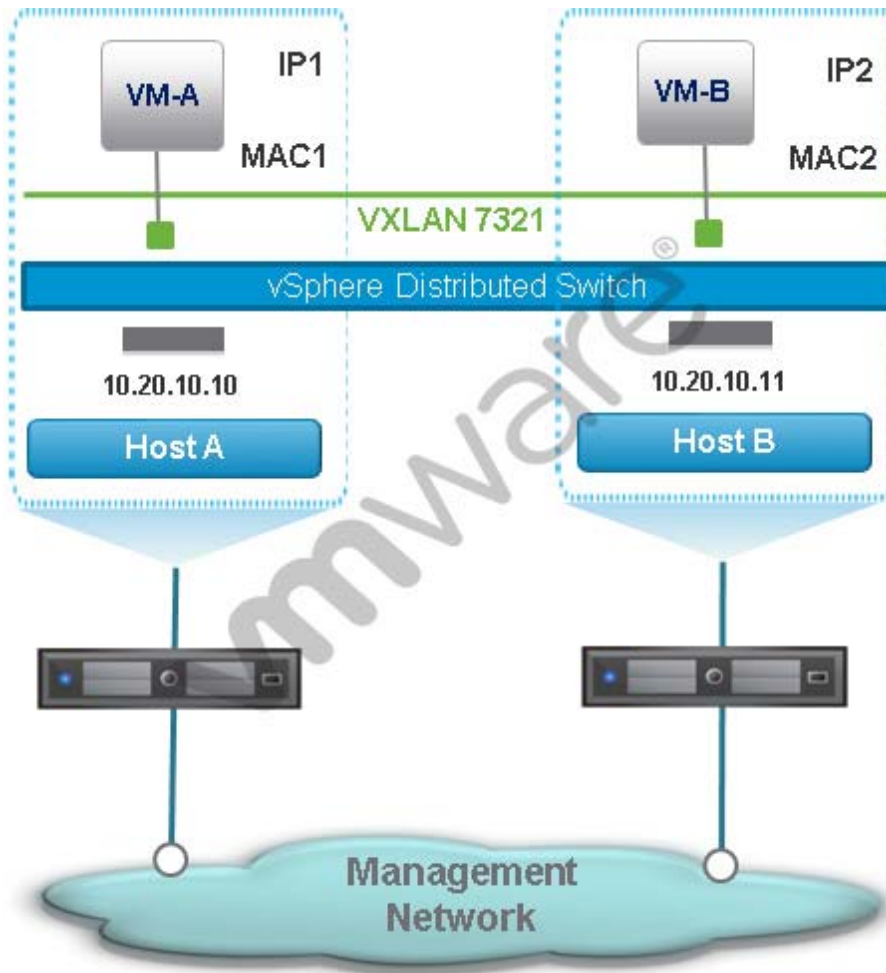
Which Layer 2 bridge is supported by the Distributed Router?

- A. VCD-NI to VLAN bridge
- B. VXLAN to PVLAN bridge
- C. VCD-NI to PVLAN bridge
- D. VXLAN to VLAN bridge

Answer: D

QUESTION: 171

-- Exhibit--



-- Exhibit --

An administrator configures an NSX network as shown: Both VM-A and VM-B use the same Distributed Router for their default gateway. VM-B receives an IP message from VM-A. What is the source MAC address of the IP message received by VM-B?

- A. VM-B's default gateway's MAC address.
- B. VM-A's MAC address.
- C. VM-A's default gateway's MAC address.
- D. Logical Switch 7321's MAC address.

Answer: A

QUESTION: 172

-- Exhibit--



-- Exhibit --

An administrator attempts to create an NSX configuration backup and receives an error. The current backup configuration displays the following information: What task does the administrator need to complete to perform a successful backup?

- A. Configure the FTP Server Settings
- B. Turn Scheduling on
- C. Enable exclusions
- D. Start the backup service

Answer: A

QUESTION: 173

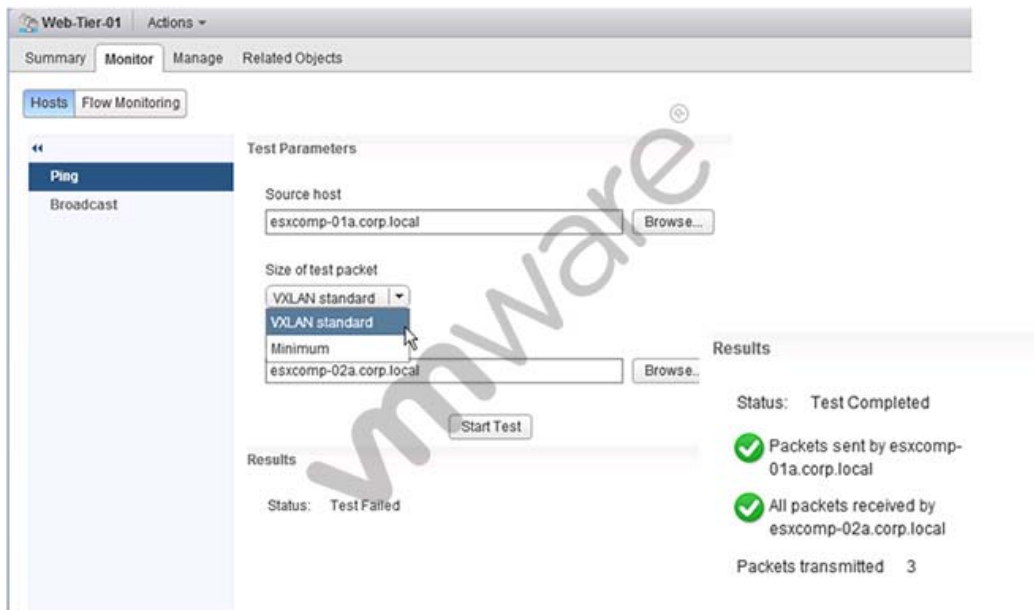
Which configuration change on the physical infrastructure is required when deploying NSX?

- A. Increase the MTU size on the physical switches
- B. Enable multicast when the control plane mode is set to unicast
- C. Disable spanning tree protocol
- D. Enable IGMP snooping when the control plane mode is set to multicast

Answer: A

QUESTION: 174

-- Exhibit--



-- Exhibit --

An administrator is testing connectivity between two ESXi hosts and uses the ping utility. Based on the results shown in the exhibit, which statement is correct?

- A. Communication between the hosts is working correctly.
- B. The hosts are in separate subnets.
- C. The MTU size is too small.
- D. A logical router has not been deployed and configured.

Answer: C

QUESTION: 175

Which two statements correctly describe Spine-Leaf switch topologies? (Choose two.)

- A. Spine-leaf topologies must utilize layer 3 switching for inter-connectivity.
- B. Spine-leaf topologies can utilize layer 2 or layer 3 switching for inter-connectivity.
- C. Oversubscription, if it occurs, is more likely to be found in the spine switches.
- D. Oversubscription, if it occurs, is more likely to be found in the leaf switches.

Answer: B, D

QUESTION: 176

If unicast mode is configured for the overlay transport in an NSX deployment, which two statements correctly define the network support that is required? (Choose two.)

- A. Configure NSX High Availability
- B. Layer 2 switching support in the access and distribution layers
- C. Layer 3 switching support in the access and distribution layers
- D. Configure Jumbo Frame support

Answer: C, D

QUESTION: 177

Which option is VMware's best practice for the deployment of NSX Manager and NSX Controller components?

- A. Deploy the NSX Manager and NSX Controller components to a management cluster.
- B. Deploy the NSX Manager component to a management cluster and the NSX Controller components to a resource cluster.
- C. Deploy the NSX Controller components to a management cluster and the NSX Manager component to a resource cluster.
- D. Deploy the NSX Manager and NSX Controller components to a resource cluster.

Answer: A

QUESTION: 178

You have a vSphere deployment consisting of ESXi 5.1 hosts and a vCenter Server 5.5. You are deploying NSX and begin by creating a vSphere Distributed Switch (vDS) on the vCenter Server using default settings. What is the next step in preparing the deployment for NSX?

- A. Use the option Add host networking.
- B. Use the option Add and Manage Hosts.
- C. Deploy NSX on each host.
- D. Upgrade the ESXi hosts.

Answer: D

Download Full Version From <https://www.certkillers.net>



DON'T KNOW
OR NO PREFERENCE

Pass your exam at First Attempt....Guaranteed!