



Vmware

VCP410

VMware Certified Professional on vSphere 4

- A. The ESX Host has 2 AMD dual-core CPUs
- B. 8 vCPU support is only available for 32-bit guest OS VMs
- C. The Virtual Machine Version is 7
- D. The ESX Host has 2 Intel dual-core CPUs

Answer: A

QUESTION: 301

In order to reach the BIOS of a Virtual Machine (Choose Two):

- A. The System Administrator can force the Virtual Machine to boot into the BIOS by changing a Virtual Machine property
- B. The System Administrator can manually edit the .NVRAM file in the Virtual Machine's home directory
- C. The System Administration can power on the Virtual Machine and press F2 as the VM starts up
- D. The System Administrator can edit the .vmx settings for the Virtual Machine

Answer: A, C

QUESTION: 302

Windows VM's use a page file and Linux VM's use a swap partition for virtual memory. When determining the appropriate size for these, which of the following files would be affected?

- A. the .vmdk file
- B. the Service Console swap partition
- C. the .vswp file
- D. the -flat.vmdk file

Answer: D

QUESTION: 303

You may create a new vApp under which of the following conditions (Choose Two):

- A. The ESX Server can be version 3.0 or later
- B. The ESX Server hosting the vApp must in a DRS-enabled Cluster
- C. The ESX Server must be version 4.x
- D. The ESX Server can be a standalone host or reside in a DRS Cluster

Answer: A, B

QUESTION: 304

You may create a new vApp under which of the following conditions (Choose Two):

- A. The ESX Server can be version 3.0 or later
- B. The ESX Server hosting the vApp must be in a DRS-enabled Cluster
- C. The ESX Server must be version 4.x
- D. The ESX Server can be a standalone host or reside in a DRS Cluster

Answer: A, B

QUESTION: 305

Following an ESXi Host Remediation with Update Manager, the following error is displayed:

Failed to remediate ESX01 because of an invalid state. Unknown

Which of the following actions will allow the virtual machine to be successfully remediated?

- A. Restart the Virtual Machine
- B. Restart the Update Manager service
- C. Place the ESXi Host into Maintenance Mode
- D. Restart the ESXi Host

Answer: D

QUESTION: 306

An ESX Server in a DRS cluster is placed into Maintenance Mode. Which of the following conditions are true (Choose Two)?

- A. If the DRS cluster is in fully automated mode, DRS will automatically VMotion Virtual Machines to other ESX Servers
- B. If the DRS cluster is in manual mode then the ESX Host will not enter Maintenance Mode until all VMs are migrated or powered off
- C. If the DRS cluster is in partially automated mode then the Virtual Machines that have a High Restart Priority will be moved to another ESX Server
- D. If the DRS cluster is in partially automated mode, DRS will make a migration recommendation and then VMotion Virtual Machines to other ESX servers

Answer: A, B

QUESTION: 307

In configuring a VMware HA Cluster the System Administrator can configure Admission Control. There are two options: Prevent VMs from being powered on if they violate availability constraints, or Allow VMs to be powered on even if they violate availability constraints. If the System Administrator chooses the option Allow VMs to be powered on even if they violate availability constraints then which of the following apply in the event of an ESX Host failure (Choose Two)?

- A. Virtual Machines can be powered on until the percentage of cluster resources reaches 25%
- B. Only Virtual Machines with a high restart priority will be restarted on surviving ESX Hosts
- C. VMware HA restarts Virtual Machines on surviving hosts with the most unreserved capacity
- D. VMware HA cannot guarantee that all VMs from a failed host will be restarted

Answer: C, D

QUESTION: 308

An administrator is configuring a VMware HA Cluster for three hosts and their resident VMs. The HA cluster will be configured to support a single host failure and resource reservations must be enforced during a failover event. Assuming default settings, how does HA determine the failover capacity determined?

- A. Using an average of the total CPU Reservation and Memory Reservation values of all virtual machines in the cluster
- B. Using the highest CPU Reservation and the Available Memory values for any given virtual machine in the cluster
- C. Using an average of the total CPU Reservation and Available Memory values of all virtual machines in the cluster
- D. Using the highest CPU Reservation and Memory Reservation values of any given virtual machine in the cluster

Answer: D

QUESTION: 309

vCenter Server is running within a virtual machine (VM) that is part of a VMware HA and DRS cluster. The vCenter Server VM can migrate between all hosts in the cluster by using VMotion. DRS is configured for partial automation. What happens if

the ESX host that is currently running the vCenter Server VM experiences a power outage?

- A. VMware HA will restart the vCenter Server VM on another host
- B. This situation cannot occur because vCenter Server cannot be installed on a VMware HA cluster
- C. vCenter Server will remain offline, but all virtual machines on the remaining hosts will continue without interruption
- D. All DRS cluster operations will be unavailable until the failed ESX Host is brought back online

Answer: A

QUESTION: 310

The maximum number of failover hosts in a VMware HA cluster is:

- A. 32
- B. 16
- C. 8
- D. 4

Answer: D

QUESTION: 311

Which of the following is the technology used by VMware Fault Tolerance?

- A. VMware vCluster
- B. VMware vLockstep
- C. VMware vShield
- D. VMware vmSafe

Answer: B

QUESTION: 312

When adjusting the slider to allocate resources for a Virtual Machine, the yellow indicator on the resource bar indicates:

- A. a limit has been imposed by the Resource Pool or the ESX Host where the VM is running

- B. the current configured limit value, if one exists
- C. the maximum resources that can be reserved for the virtual machine
- D. the current configured reservation value, if one exists

Answer: A

QUESTION: 313

In the vSphere Client the Virtual Machine Resource Allocation tab shows Host Memory and Guest Memory. What is the meaning of these terms? (Choose Two):

- A. Guest Memory is amount of physical memory that has been allocated to a Virtual Machine
- B. Guest Memory is the actual memory usage of the Virtual Machine
- C. Host memory is the amount of physical memory that has been allocated to a Virtual Machine
- D. Host memory is the actual memory usage of the Virtual Machine.

Answer: B, C

QUESTION: 314

A developer wishes to disable logging for a number of virtual machines used for testing purposes, in order to maximize available datastore space. The virtual machines reside on an ESX Host managed by vCenter Server. Which of the following methods can be used to disable virtual machine logging?

- A. From the Configuration tab for the ESX Host running the virtual machines, choose Advanced Settings. Set the Disable Logging parameter to Yes
- B. Edit the settings for each virtual machine. Under Options > Advanced > General, uncheck Enable Logging
- C. Manually edit each virtual machines .vmx file and set logging=false
- D. Connect a vSphere Client to vCenter Server. Under the Administration drop-down, check Disable Virtual Machine Logging

Answer: B

QUESTION: 315

When creating an MSCS Cluster across 2 ESX 4 Hosts, what type of Virtual Disks can be used?

- A. Raw Device Mapped (RDM) disks in Physical Compatibility Mode only

- B. Raw Device Mapped (RDM) disks in Virtual Compatibility Mode only
- C. Raw Device Mapped (RDM) disks in Physical or Virtual Compatibility Mode, or virtual disks on a shared VMFS datastore
- D. Raw Device Mapped (RDM) disks in Physical or Virtual Compatibility Mode

Answer: D

QUESTION: 316

You have a newly set up 2 node cluster with HA and DRS enabled and DRS is in fully automated mode. Following best practices guidelines, you have set up the connection types on separate physical networks. While testing DRS, you notice no virtual machines are moving from one ESX host to the other despite great disparity in resource utilization between the ESX hosts. The image shows the error and the network configuration for one of the hosts. What should you do to fix this problem?

- A. Enable the VMkernel port for vMotion.
- B. Disable HA for this cluster.
- C. Change the IP address to a valid address on the VMkernel network.
- D. Change the vSwitch connection to the Service Console network interface.

Answer: C

QUESTION: 317

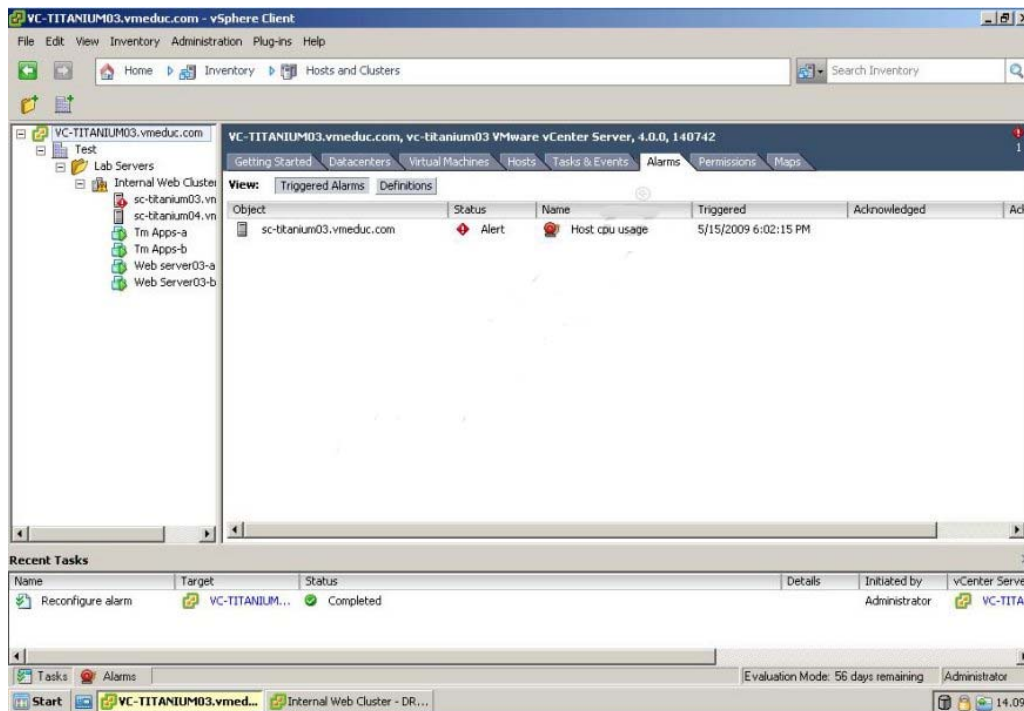
A new LUN has been presented to two ESX Servers, ESXA and ESXB. The LUN can be seen from both servers. A new VMFS-3 volume is created on the LUN using a vSphere Client attached to ESX Server B. The new datastore is visible on ESX Server B, but not on ESX Server A. What steps must be taken to make the datastore visible to ESX Server A?

- A. Perform a Rescan operation on ESX Server B
- B. Modify LUN masking settings on the storage array
- C. Reboot ESX Server A
- D. Perform a Rescan operation on ESX Server A

Answer: D

QUESTION: 318

(Click the Exhibit button)



Users are having difficulty accessing a web server since a new web application was configured to run on sc-titanium03.vmeduc.com. The vSphere client reports the error shown in the exhibit. DRS is set to fully automated mode, but the problem has not resolved. Which of the following actions could be taken to resolve the issue?

- A. Power down one or more virtual machines on the ESX Host running the web server virtual machine and migrate them to the other ESX Host in the cluster.
- B. Migrate one or more running virtual machines on the ESX Host running the web server virtual machine to the other ESX Host in the cluster.
- C. Add another ESX Host to the cluster.
- D. Hot add another CPU to the web server virtual machine.

Answer: A

QUESTION: 319

During peak operating hours, an Administrator finds that a business critical application is not performing as well as during normal hours. Which of the following memory management methods could be used to guarantee the application performs well at all times?

- A. Set a Reservation equal to the Average Memory utilization of the virtual machine running the application
- B. Set the Share level to High for the virtual machine running the application and set all other virtual machines to Low

- C. Set a Limit equal to the Peak Memory utilization of the virtual machine running the application
- D. Set a Reservation equal to the Configured Memory of the virtual machine running the application

Answer: D

QUESTION: 320

What is a function of the vmmemctl driver?

- A. reclaims unused memory from the guest OS
- B. allows the operation of unsupported guest OS types
- C. enables transparent page sharing
- D. enables swapping of the virtual machines

Answer: A

Download Full Version From <https://www.certkillers.net>



DON'T KNOW
OR NO PREFERENCE

Pass your exam at First Attempt....Guaranteed!