



# Palo Alto Networks

## PCNSE7 Exam

### Palo Alto Networks Certified Network Security Engineer Exam

Thank you for Downloading PCNSE7 exam PDF Demo

You can Buy Latest PCNSE7 Full Version Download

<https://www.certkillers.net/Exam/PCNSE7>

<https://www.certkillers.net>

## Version: 15.0

---

### Question: 1

---

A host attached to Ethernet 1/4 cannot ping the default gateway. The widget on the dashboard shows Ethernet 1/1 and Ethernet 1/4 to be green. The IP address of Ethernet 1/1 is 192.168.1.7 and the IP address of Ethernet 1/4 is 10.1.1.7. The default gateway is attached to Ethernet 1/1. A default route is properly configured.

What can be the cause of this problem?

- A. No Zone has been configured on Ethernet 1/4.
- B. Interface Ethernet 1/1 is in Virtual Wire Mode.
- C. DNS has not been properly configured on the firewall.
- D. DNS has not been properly configured on the host.

---

**Answer: A**

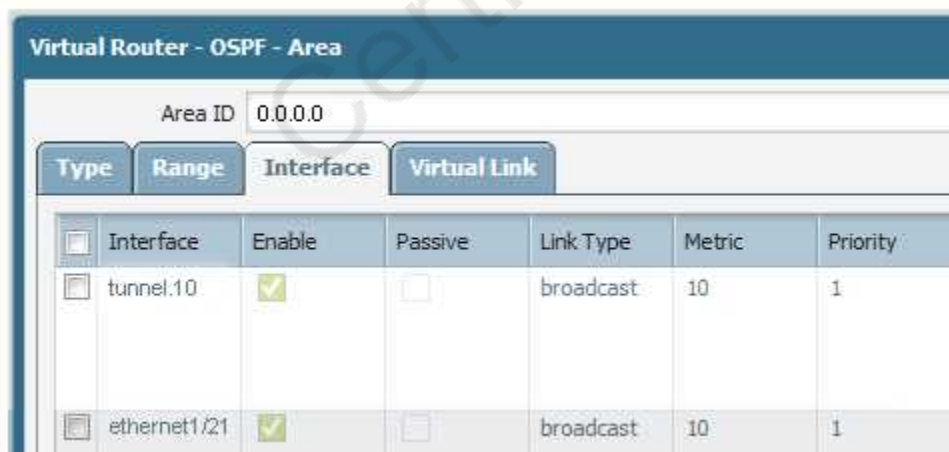
---

---

### Question: 2

---

Site-A and Site-B have a site-to-site VPN set up between them. OSPF is configured to dynamically create the routes between the sites. The OSPF configuration in Site-A is configured properly, but the route for the tunnel is not being established. The Site-B interfaces in the graphic are using a broadcast Link Type. The administrator has determined that the OSPF configuration in Site-B is using the wrong Link Type for one of its interfaces.



Type	Range	Interface	Virtual Link				
<input type="checkbox"/>		Interface	Enable	Passive	Link Type	Metric	Priority
<input type="checkbox"/>		tunnel.10	<input checked="" type="checkbox"/>	<input type="checkbox"/>	broadcast	10	1
<input type="checkbox"/>		ethernet1/21	<input checked="" type="checkbox"/>	<input type="checkbox"/>	broadcast	10	1

Which Link Type setting will correct the error?

- A. Set tunnel. 1 to p2p
- B. Set tunnel. 1 to p2mp
- C. Set Ethernet 1/1 to p2mp
- D. Set Ethernet 1/1 to p2p

---

**Answer: A**

---



---

**Question: 3**

---

Given the following table.

Destination	Next Hop	Flags	Age	Interface
10.66.22.0/23	10.66.22.80	A C		ethernet1/5
10.66.22.80/32	0.0.0.0	A H		
10.66.24.0/23	0.0.0.0	R		ethernet1/3
10.66.24.0/23	0.0.0.0	Oi	19567	ethernet1/3
10.66.24.0/23	10.66.24.80	A C		ethernet1/3
10.66.24.80/32	0.0.0.0	A H		
192.168.80.0/24	192.168.80.1	A C		ethernet1/4
192.168.80.1/32	0.0.0.0	A H		
192.168.93.0/30	10.66.24.88	R		ethernet1/3
192.168.93.0/30	10.66.24.93	A Oi	600	ethernet1/3

Which configuration change on the firewall would cause it to use 10.66.24.88 as the next hop for the 192.168.93.0/30 network?

- A. Configuring the administrative Distance for RIP to be lower than that of OSPF Int.
- B. Configuring the metric for RIP to be higher than that of OSPF Int.
- C. Configuring the administrative Distance for RIP to be higher than that of OSPF Ext.
- D. Configuring the metric for RIP to be lower than that OSPF Ext.

---

**Answer: A**

---



---

**Question: 4**

---

A VPN connection is set up between Site-A and Site-B, but no traffic is passing in the system log of Site-A, there is an event logged as like-nego-p1-fail-psk.

What action will bring the VPN up and allow traffic to start passing between the sites?

- A. Change the Site-B IKE Gateway profile version to match Site-A,
- B. Change the Site-A IKE Gateway profile exchange mode to aggressive mode.
- C. Enable NAT Traversal on the Site-A IKE Gateway profile.
- D. Change the pre-shared key of Site-B to match the pre-shared key of Site-A

---

**Answer: D**

---



---

**Question: 5**

---

A company is upgrading its existing Palo Alto Networks firewall from version 7.0.1 to 7.0.4. Which three methods can the firewall administrator use to install PAN-OS 7.0.4 across the enterprise?( Choose three)

- A. Download PAN-OS 7.0.4 files from the support site and install them on each firewall after manually uploading.
- B. Download PAN-OS 7.0.4 to a USB drive and the firewall will automatically update after the USB drive is inserted in the firewall.
- C. Push the PAN-OS 7.0.4 updates from the support site to install on each firewall.
- D. Push the PAN-OS 7.0.4 update from one firewall to all of the other remaining after updating one firewall.
- E. Download and install PAN-OS 7.0.4 directly on each firewall.
- F. Download and push PAN-OS 7.0.4 from Panorama to each firewall.

---

**Answer: ACF**

---

---

**Question: 6**

---

A logging infrastructure may need to handle more than 10,000 logs per second. Which two options support a dedicated log collector function? (Choose two)

- A. Panorama virtual appliance on ESX(i) only
- B. M-500
- C. M-100 with Panorama installed
- D. M-100

---

**Answer: BC**

---

Explanation:

(<https://live.paloaltonetworks.com/t5/Management-Articles/Panorama-Sizing-and-Design-Guide/ta-p/72181>)

---

**Question: 7**

---

Which three fields can be included in a pcap filter? (Choose three)

- A. Egress interface
- B. Source IP
- C. Rule number
- D. Destination IP
- E. Ingress interface

---

**Answer: BCD**

---

Explanation:

(<https://live.paloaltonetworks.com/t5/Featured-Articles/Getting-Started-Packet-Capture/ta->

p/72069)

---

**Question: 8**

---

A company hosts a publically accessible web server behind a Palo Alto Networks next generation firewall with the following configuration information.

Users outside the company are in the "Untrust-L3" zone

The web server physically resides in the "Trust-L3" zone.

Web server public IP address: 23.54.6.10

Web server private IP address: 192.168.1.10

Which two items must be NAT policy contain to allow users in the untrust-L3 zone to access the web server? (Choose two)

- A. Untrust-L3 for both Source and Destination zone
- B. Destination IP of 192.168.1.10
- C. Untrust-L3 for Source Zone and Trust-L3 for Destination Zone
- D. Destination IP of 23.54.6.10

---

**Answer: CD**

---

---

**Question: 9**

---

A network engineer has received a report of problems reaching 98.139.183.24 through vr1 on the firewall. The routing table on this firewall is extensive and complex.

Which CLI command will help identify the issue?

- A. test routing fib virtual-router vr1
- B. show routing route type static destination 98.139.183.24
- C. test routing fib-lookup ip 98.139.183.24 virtual-router vr1
- D. show routing interface

---

**Answer: C**

---

---

**Question: 10**

---

A network Administrator needs to view the default action for a specific spyware signature. The administrator follows the tabs and menus through Objects> Security Profiles> Anti-Spyware and select default profile.

What should be done next?

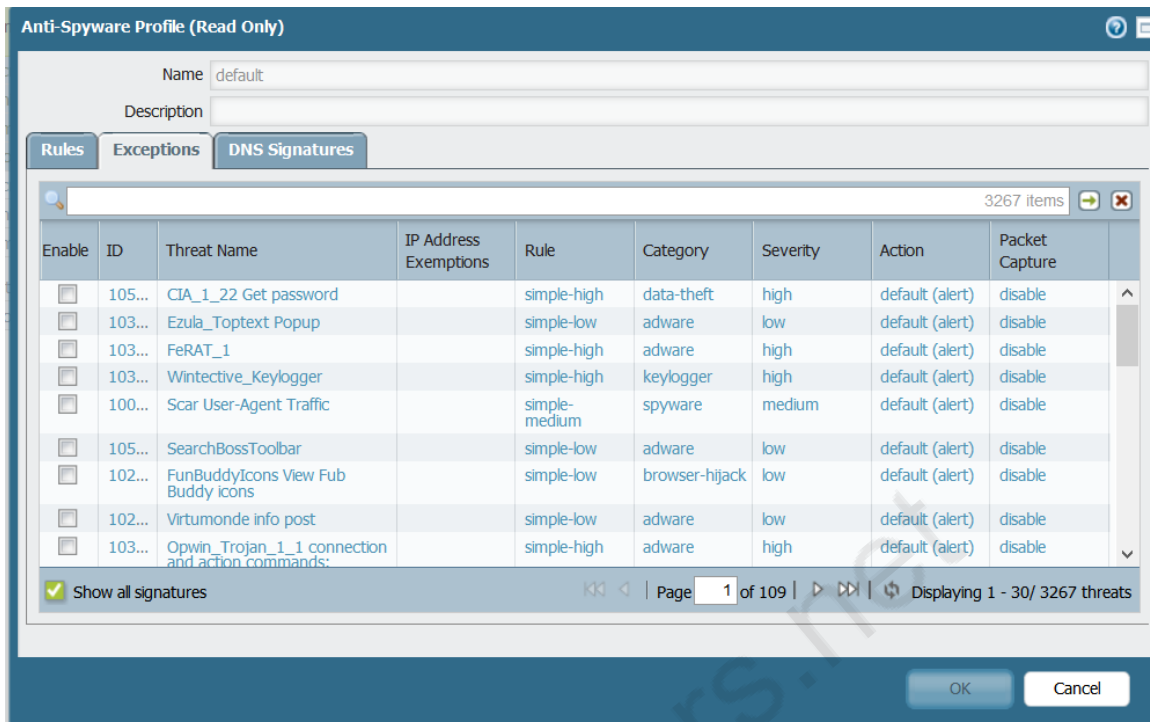
- A. Click the simple-critical rule and then click the Action drop-down list.
- B. Click the Exceptions tab and then click show all signatures.
- C. View the default actions displayed in the Action column.
- D. Click the Rules tab and then look for rules with "default" in the Action column.

---

**Answer: B**

---

Explanation:




---

### Question: 11

---

Which two statements are correct for the out-of-box configuration for Palo Alto Networks NGFWs? (Choose two)

- A. The devices are pre-configured with a virtual wire pair out the first two interfaces.
- B. The devices are licensed and ready for deployment.
- C. The management interface has an IP address of 192.168.1.1 and allows SSH and HTTPS connections.
- D. A default bidirectional rule is configured that allows Untrust zone traffic to go to the Trust zone.
- E. The interface are pingable.

---

**Answer: BC**

---



---

### Question: 12

---

Which two mechanisms help prevent a split brain scenario an Active/Passive High Availability (HA) pair? (Choose two)

- A. Configure the management interface as HA3 Backup
- B. Configure Ethernet 1/1 as HA1 Backup
- C. Configure Ethernet 1/1 as HA2 Backup
- D. Configure the management interface as HA2 Backup

- E. Configure the management interface as HA1 Backup
- F. Configure ethernet1/1 as HA3 Backup

**Answer: BE**

**Question: 13**

Click the Exhibit button



An administrator has noticed a large increase in bittorrent activity. The administrator wants to determine where the traffic is going on the company. What would be the administrator's next step?

- A. Right-Click on the bittorrent link and select Value from the context menu
- B. Create a global filter for bittorrent traffic and then view Traffic logs.
- C. Create local filter for bittorrent traffic and then view Traffic logs.
- D. Click on the bittorrent application link to view network activity

**Answer: D**

**Question: 14**

How is the Forward Untrust Certificate used?

- A. It issues certificates encountered on the Untrust security zone when clients attempt to connect to a site that has be decrypted/
- B. It is used when web servers request a client certificate.
- C. It is presented to clients when the server they are connecting to is signed by a certificate authority that is not trusted by firewall.
- D. It is used for Captive Portal to identify unknown users.

**Answer: C**

---

**Question: 15**

---

Which command can be used to validate a Captive Portal policy?

- A. eval captive-portal policy <criteria>
- B. request cp-policy-eval <criteria>
- C. test cp-policy-match <criteria>
- D. debug cp-policy <criteria>

---

**Answer: C**

---

CertKillers.net



## Thank You for trying PCNSE7 PDF Demo

To Buy Latest PCNSE7 Full Version Download visit link below

<https://www.certkillers.net/Exam/PCNSE7>

## Start Your PCNSE7 Preparation

**[Limited Time Offer]** Use Coupon “CKNET” for Further discount on your purchase. Test your PCNSE7 preparation with actual exam questions.

<https://www.certkillers.net>