

# Huawei

## H12-224 Exam

### HCIP-Routing & Switching (Fast Track) V2.0



### Question: 1

On a STP network, which of the following BPDUs are sent during flooding of information throughout the network due to STP topology change?

- A. BPDUs with the TCN flag
- B. BPDUs with the TCA flag
- C. BPDUs with the TC flag
- D. All of the above

**Answer: D**

### Question: 2

The “import-route limit” command is used to set a maximum number of imported routes that can be imported into an OSPF routing process.

- A. TRUE
- B. FALSE

**Answer: A**

### Question: 3

Dividing a network using VLANs can (). (Select 2 answers)

- A. Support more network layer protocols
- B. Restrict the scope of broadcast domains
- C. Increase the number of collision domains
- D. Guarantee data security

**Answer: BD**

### Question: 4

Which of the following protocols support the multicast ASM service model? (Select 2 answers)

- A. PIM-SM and IGMPv2
- B. PIM-SSM and IGMPv3
- C. BGP and OSPF
- D. PIM-DM and IGMPv2

**Answer: AD**

### Question: 5

You cannot set an aging time for the blacklist of the USG.

- A. TRUE
- B. FALSE

**Answer: B**

### Question: 6

Which of the following statements regarding VLAN configuration are true? (Select 2 answers)

- A. You can enter the VLAN view and create a VLAN at the same time.
- B. Running undo VLAN invalidates the VLAN but the VLAN still exists. You do not need to recreate the VLAN to use it.
- C. You can configure a description string of VLAN. The length of the string is unlimited.
- D. If the VLAN ID is not entered when running the display VLAN command, all information about the VLAN will be displayed.

**Answer: AD**

### Question: 7

How many bits of the MAC address space is available for mapping IP multicast addresses?

- A. 24
- B. 22
- C. 25
- D. 23

**Answer: A**

### Question: 8

An OSPF neighbor relationship fails to establish and the OSPF error information is displayed as follows. Which of the following is most likely the cause?

[RTB]display ospf error

OSPF Process 1 with Router ID 2.2.2.2

OSPF error statistics:

General packet errors:

0	: IP: received my own packet	0	: Bad packet
0	: Bad version	0	: Bad checksum
0	: Bad area id	0	: Drop on unnumbered interface
0	: Bad virtual link	0	: Bad authentication type
0	: Bad authentication key	0	: Packet too small
0	: Packet size > ip length	0	: Transmit error
0	: Interface down	0	: Unknown neighbor

HELLO packet errors:

0	: Netmask mismatch	0	: Hello timer mismatch
0	: Dead timer mismatch	0	: Extern option mismatch
9	: Router id confusion	0	: Virtual neighbor unknown
0	: NBMA neighbor unknown		

DD packet errors:

0	: Neighbor state low	0	: Router id confusion
0	: Extern option mismatch	0	: Unknown LSA type
0	: MTU option mismatch		

LS ACK packet errors:

0	: Neighbor state low	0	: Bad ack
0	: Duplicate ack	0	: Unknown LSA type

LS REQ packet errors:

0	: Neighbor state low	0	: Empty request
0	: Bad request		

LS UPD packet errors:

0	: Neighbor state low	0	: Newer self-generate LSA
0	: LSA checksum bad	0	: Received less recent LSA
0	: Unknown LSA type		

Opaque errors:

0	: 9-out of flooding scope	0	: 10-out of flooding scope
0	: 11-out of flooding scope		

Retransmission for packet over Limitation errors:

0	: Number for DD Packet	0	: Number for Update Packet
0	: Number for Request Packet		

Receive Grace LSA errors:

0	: Number of invalid LSAs	0	: Number of policy failed LSAs
0	: Number of wrong period LSAs		

Configuration errors:

0	: Tunnel cost mistake		
0	: The network type of the neighboring interface is not consistent.		

- A. Router IDs conflict.
- B. Area IDs are mismatched.
- C. Network masks are inconsistent.

D. Authentication types are inconsistent.

**Answer: C**

### Question: 9

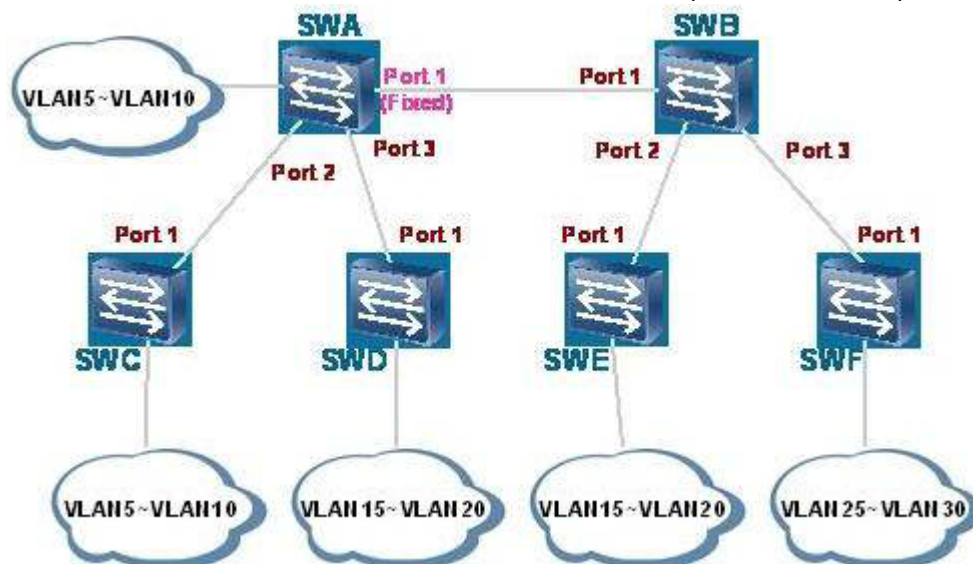
On the RSTP network with STP devices, which packets does an RSTP switch use to notify the STP switches of the topology change?

- A. RSTP BPDUs with the TC flag
- B. STP BPDUs with the TCN flag
- C. RSTP BPDUs with the TCA flag
- D. STP BPDUs with the TCA flag

**Answer: B**

### Question: 10

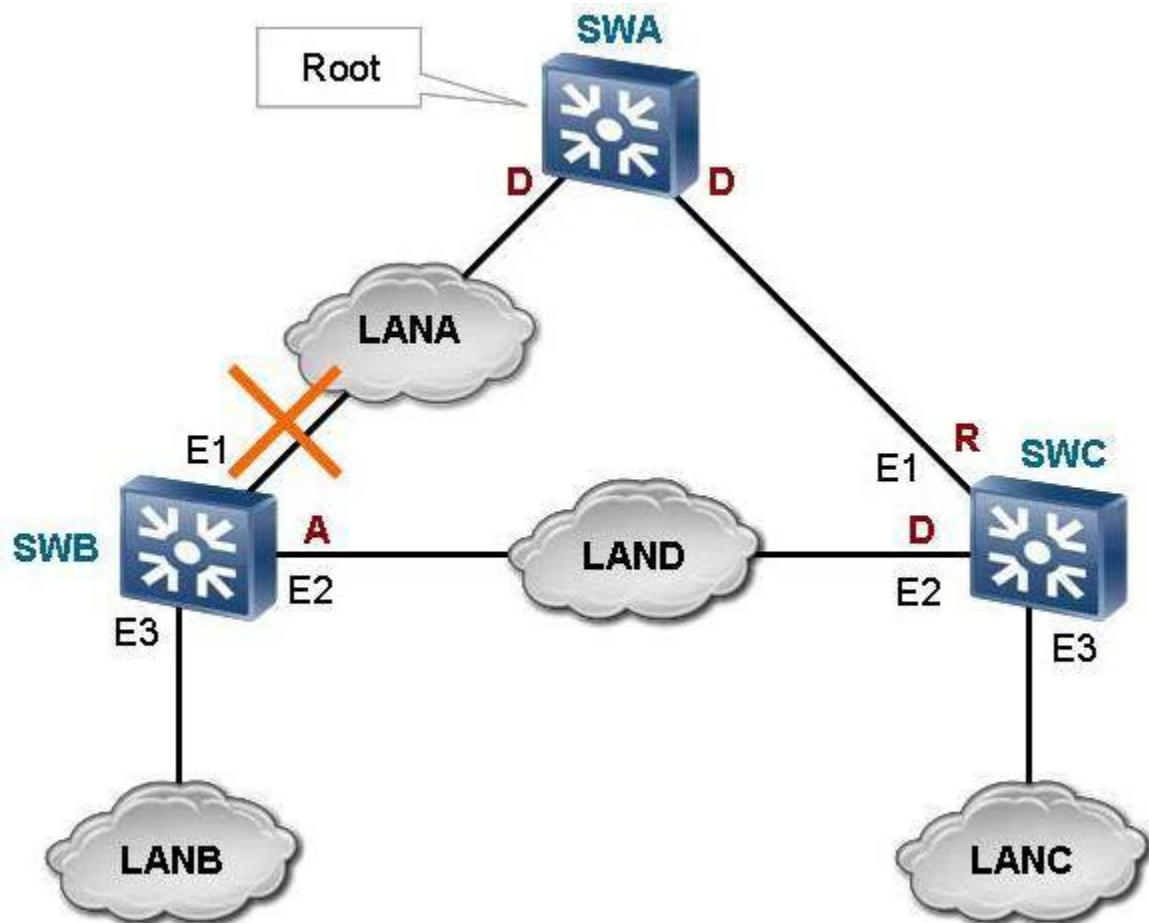
What are the same fields in RSTP BPDUs and STP BPDUs? (Select 2 Answers)



- A. TCN
- B. TC
- C. TCA
- D. All of the above

**Answer: B, C**

### Question: 11



On the RSTP network as shown in the figure, what RSTP operations will occur after the E1 port of SWB fails? (Select 3 Answers)

- A. SWB deletes the MAC address entries with the E1 port as the destination interface.
- B. The spanning tree is recalculated and the E2 port is elected as the new root port.
- C. All the interfaces in forwarding state send topology change notifications (TCNs) to notify other switches of the topology change.
- D. All the non-edge ports in forwarding state send TCNs to notify other switches of the topology change.

**Answer: A, B, D**

### Question: 12

Which is the port state defined in RSTP?

- A. Discarding

- B. Learning
- C. Forwarding
- D. All of the above

**Answer: D**

### Question: 13

RSTP has all functions that STP has and it is backward compatible with STP.

- A. True
- B. False

**Answer: A**

### Question: 14

RSTP adopts fast convergence mechanism. So, there is no Forward Delay interval in RSTP.

- A. True
- B. False

**Answer: B**

### Question: 15

Two switches are directly connected to each other and they are working in full duplex mode. By default, RSTP will consider the link between the switches as point-to-point link.

- A. True
- B. False

**Answer: A**

### Question: 16

In RSTP network environment, a port can be set as edge port when it is directly connected with terminal.

- A. True