



**IBM**

**A2180-607**

*Assessment: IBM WebSphere Process Server V7.0 Integration Development*

- C. Escalation1 and Escalation4
- D. Escalation1, Escalation3 and Escalation4

**Answer:** C

**QUESTION:** 93

Which of the following is TRUE regarding human workflow diagram widget?

- A. The diagram shows only the tasks.
- B. The diagram size cannot be changed.
- C. Failure information for an interaction is not visible.
- D. If a task does not belong to a workflow or if you do not have reader access to the process, the widget throws an error.

**Answer:** A

**QUESTION:** 94

An integration developer added a default activity administration task for a process, and set the "Administrators" role to "UserGroup1" and the "Readers" role to "UserGroup2". Which of the following statements is accurate?

- A. "UserGroup1" users will be able to terminate process instances.
- B. "UserGroup1" users will have administrator rights to all activities in the process in addition to any activity-specific definitions.
- C. "UserGroup2" users will be able to update input messages of any "Ready" activity.
- D. The default administration task staff settings will override any task that has explicit administration settings.

**Answer:** A

**QUESTION:** 95

An integration developer has a project with several business processes that use the same human task. The developer wants to re-use the staff assignment and escalation definitions but needs to make sure the task participates in the process life cycle. The BEST way to meet these needs is to:

- A. create a stand-alone to-do task and check the "Bind the lifecycle to the invoking component" checkbox, and call the task from each business process.
- B. create an inline human task for each business process with duplicate staff and

escalation definitions, sharing the same interface.

C. create a collaboration task and check the "Bind the lifecycle to the invoking component" checkbox, and call the task from each business process.

D. create a long-running process with an inline to-do task with the staff and escalation definitions and call it as a sub-process from each business process when required.

**Answer:** A

**QUESTION:** 96

An integration developer is testing a solution where every authenticated user needs the ability to start a travel request business process. The integration developer wants to avoid the overhead of creating and managing a large number of work items. The number of instances created is expected to be very high. Which of the following people assignment criteria would be the BEST choice?

- A. Users
- B. Everybody
- C. Users by User ID
- D. Group Members without Named Users

**Answer:** B

**QUESTION:** 97

Refer to the Exhibit. Which of the following statements is TRUE for this configuration?

**Staff role - Potential Owners (Parallel ownership)**

Assign People

Propagation

**Completion**

Aggregation

Specify the conditions under which the task ends before all owners have completed their tasks.

End the task based on the time that elapsed since it was created:

Calendar type: **Simple**

1 Days 5 Hours 0 Minutes 0 Seconds

\_\_\_\_\_

End the task when the following condition is met

Expression language: Simple condition

- A. The task must be an invocation task.
- B. Selecting the second checkbox and creating a simple condition will throw an exception at runtime.
- C. Configuration must be modified if the task is to be completed when 95% of the owners are finished with the task.

D. The integration developer can define escalations that are triggered when the task is in the ready or claimed state.

**Answer:** C

**QUESTION:** 98

Which of the following CORRECTLY describes a valid consideration regarding the life cycle of a collaboration task with a single owner?

- A. The task can be restarted after it has been terminated if it is not a follow-on task.
- B. The task owner can cancel his claim on the task if it is in the waiting-for-subtask sub-state.
- C. It is possible for the task to expire if it remains in the inactive state long enough without being claimed.
- D. A task that successfully completes can never return to the ready state to be claimed by a new potential owner.

**Answer:** A

**QUESTION:** 99

Module A contains a Java component which invokes creditCheck service defined in Module B. The creditCheck service takes about 2 hours to process. Therefore, the integration developer decided to invoke the creditCheck service using asynchronous with callback. Which of the following statements is TRUE?

- A. Since the creditCheck services takes about 2 hours, the request might timeout.
- B. Because the service requester is a Java component, the service invocation must be type safe.
- C. The creditCheck service needs to implement invokeResponse() method to send the response.
- D. The Java component needs to implement the onInvokeResponse() method to receive the response.

**Answer:** D

**QUESTION:** 100

Refer to the Exhibit.



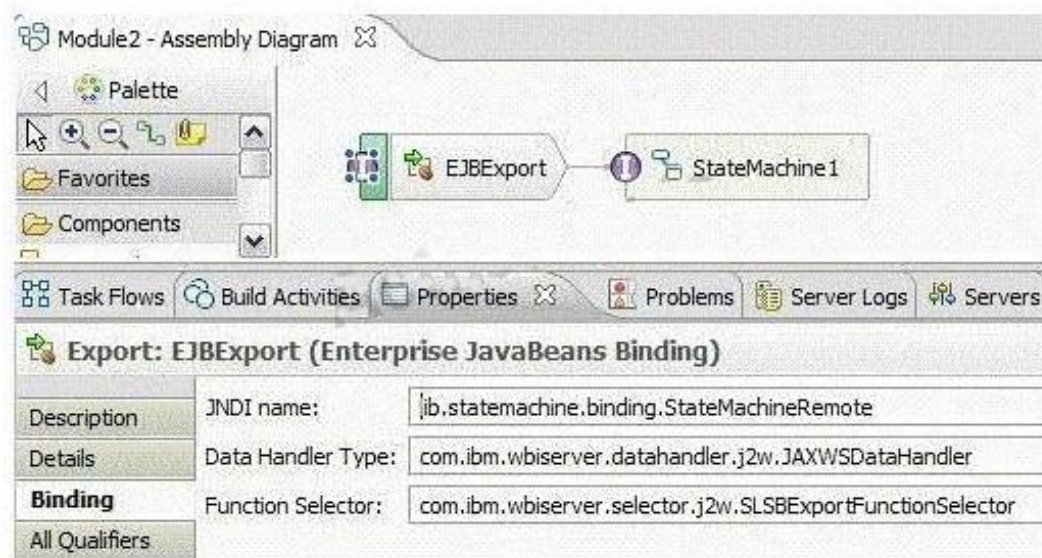
Assume that a request-response operation is used to implement BusinessProcess1. Which of the following statements CORRECTLY describes the configuration?

- A. A callback destination must be specified under the binding properties.
- B. The module will not compile because JMS is an asynchronous binding and requires a one-way operation.
- C. BusinessProcess1 can be invoked by placing an XML message on the queue associated with the JMS binding.
- D. The TargetFunctionName JMS message header must be set on the incoming request in order to invoke BusinessProcess1.

**Answer:** A

**QUESTION:** 101

Refer to the Exhibit. Which of the following statements CORRECTLY describes the configuration?



- A. An EJB client JAR must be generated in order for the module to compile and run successfully.
- B. The TargetFunctionName property must be set on the incoming request in order to invoke StateMachine1.
- C. If only a local interface is generated for the EJBExport, then all clients invoking StateMachine1 must reside in the module containing the state machine.
- D. Local and remote interfaces must be generated for the EJBExport in order for StateMachine1 to be invoked from other modules and from other servers.

**Answer:** A

**QUESTION:** 102

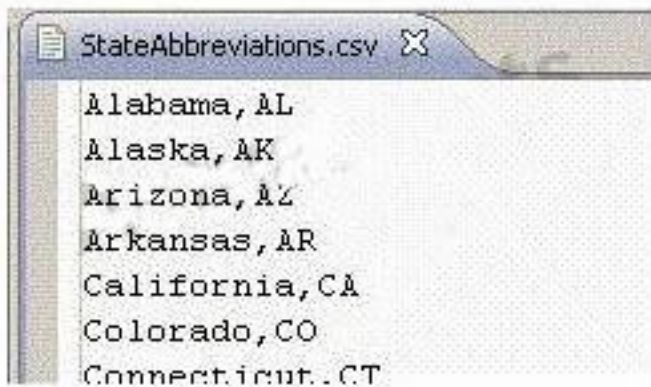
An integration developer has configured a WebSphere Adapter in a business solution to support two-way communication with an Enterprise Information System (EIS). The business solution will be triggered by a user's request on a front end web page. Which of the following statements regarding the configuration of the WebSphere Adapter is CORRECT?

- A. An SCA import and an SCA export will be generated for the adapter.
- B. A database trigger will be used to support the runtime operations of the adapter.
- C. An interface for the EIS is not required to be created before running the external services wizard.
- D. If application specific information (ASI) needs to be changed, then the external service wizard must be rerun.

**Answer:** C

**QUESTION:** 103

Refer to the Exhibit. A company uses Application A to receive purchase orders from customers, and Application B to handle the shipping. Therefore, whenever a new order is filled, the shipping address must be sent from Application A to Application B. However, Application B uses the two- letter abbreviation for the address state, while Application A uses the full state name. The state abbreviation list is stored in a CSV file as shown in the Exhibit.



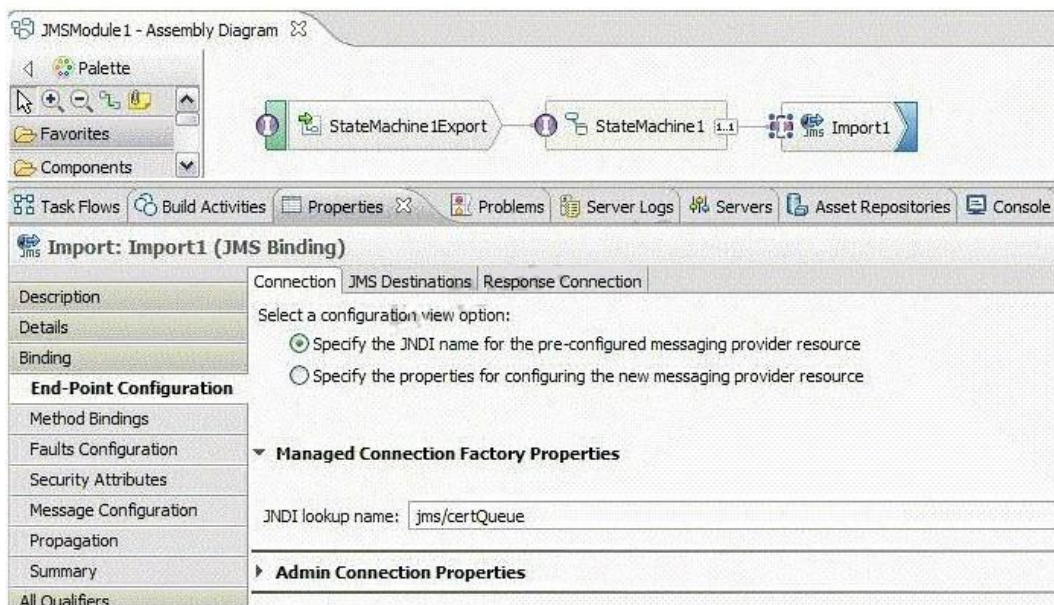
Using the given CSV file, which of the following actions will BEST accomplish this task?

- A. Create an Assign activity in a BPEL to map the state to the abbreviation.
- B. Use a Lookup transformation in a data map to call a static relationship.
- C. Use the database lookup mediation primitive to retrieve a state abbreviation?.
- D. Use a Lookup transformation in a data map to retrieve a state abbreviation from the CSV file.

**Answer:** D

**QUESTION:** 104

Refer to the Exhibit. Which of the following statements CORRECTLY describes the configuration?



- A. The operation attached to the JMS import is one-way.
- B. StateMachine1 will not continue processing until a response is received from the service.
- C. A JMS export is required to enable StateMachine1 to receive JMS responses back from the service.
- D. The jms/certQueue connection factory will be automatically created if it does not exist on the server at runtime.

**Answer:** B



Download Full Version From <https://www.certkillers.net>



**DON'T KNOW**  
OR NO PREFERENCE

*Pass your exam at First Attempt....Guaranteed!*