



ADOBE

9A0-080

Adobe Captivate 3 ACE

QUESTION: 81

Where do you find the 508 compliance Output option?

- A. The Global category under Preferences.
- B. The General category under Preferences.
- C. The Project category under Preferences.
- D. The Layout drop-down menu in the Skin Editor.

Answer: C

QUESTION: 82

You will be embedding a single SWF movie into an Adobe PDF document. Which property should you set in the skin editor?

- A. Turn off borders
- B. Select not to show the menu
- C. Turn off the playback control
- D. Select a BMP playbar

Answer: A

QUESTION: 83

You want to add a frame that surrounds an existing project. What should you do?

- A. Using an HTML editor and edit the HTML page to place the Captivate movie inside an inline frame.
- B. Choose Edit > Preferences > Defaults and choose and select options for Frame color and Frame width.
- C. Choose Project > Skin and enable each surrounding border in the Borders tab of the Skin Editor. Then configure the size, pattern and color as needed.
- D. Choose File > Publish > Standalone and select Full screen.

Answer: C

QUESTION: 84

You want to add a menu that allows users to navigate to the main points in your Captivate project. All of the main points exist within your current project. What should you do?

- A. Choose File > Record/Create > Menubuilder Project and create the menu.
- B. Use Adobe Flash to create a menu for your project. Then export the Captivate project so it may be added into the menu created in Flash.
- C. Choose Project > Skin and create the menu by using the options on the Menu tab of the Skin Editor dialog box.
- D. Publish the Project as a SWF, then edit the HTML file to include a JavaScript menu that can be used to navigate through the project.

Answer: C

QUESTION: 85

You are publishing your Captivate project as a Word document. You want to provide your questions and an answer key. Which output type should you choose?

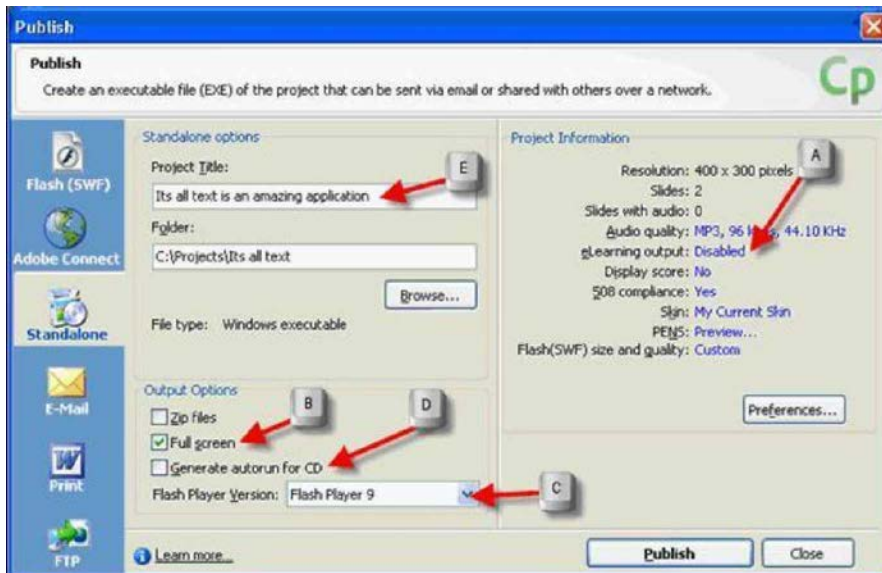
- A. Handouts
- B. Step by Step
- C. Lesson
- D. Storyboard

Answer: C

QUESTION: 86

Click the Exhibit button.

After publishing a Captivate project as a standalone and distributing on CD, you receive reports that the CD does NOT automatically present the Captivate movie after being inserted in a PC. Based on the exhibit, what are two reasons for this behavior?(Choose two.)



- A. eLearning output needs to be enabled.
- B. The Full screen option needs to be deselected.
- C. The Flash Player Version needs to be changed.
- D. The Generate autorun for CD option needs to be selected.
- E. The Project Title is too long and needs to be shortened to 8 characters or less.

Answer: D, E

QUESTION: 87

You would like to include a question slide in your project that asks users to associate items in two lists, such as words and definitions. Which question type should you use?

- A. Likert
- B. Matching
- C. Sequence
- D. Short Answer

Answer: B

QUESTION: 88

You are preparing a Captivate presentation to train an audience of hardware engineers on using a new piece of equipment. You want to quiz them to see if they can easily

identify the location of one particularly critical switch. Which question type should you use?

- A. Matching
- B. Sequence
- C. Short Answer
- D. Hotspot
- E. Fill-in-the-blank

Answer: D

QUESTION: 89

Which quiz setting preference shows learners the question they are currently working on?

- A. Show progress
- B. Allow user to review quiz
- C. Show score at end of quiz
- D. Allow backward movement

Answer: A

QUESTION: 90

You have included a text entry box in your project where the user is asked to type their first and last name. You want to ensure that the text the user types is reported. What should you do?

- A. Set the Reporting Level to Report score.
- B. Set the Choose report data to Quiz results only.
- C. Set the LMS to AICC.
- D. Set the reporting level to Interactions and score.

Answer: D

QUESTION: 91

You would like to include a question slide in your project that asks users to express agreement or disagreement with specific statements. There are no right or wrong answers. Which question type should you use?

- A. Likert
- B. Matching
- C. Sequence
- D. Short Answer

Answer: A

QUESTION: 92

You want to add closed captioning text to your slides. What should you do?

- A. Choose BMP playbars for the Skin property in the Skin Editor dialog box.
- B. Choose Audio > Advanced Audio, click on an audio track, click the Closed Caption button and add a caption.
- C. Choose Project > Skin and deselect Show playback control in the Playback Control tab of the Skin Editor dialog box
- D. Add closed captioning text to slide notes.

Answer: B

Download Full Version From <https://www.certkillers.net>



DON'T KNOW
OR NO PREFERENCE

Pass your exam at First Attempt....Guaranteed!