



Microsoft

77-600

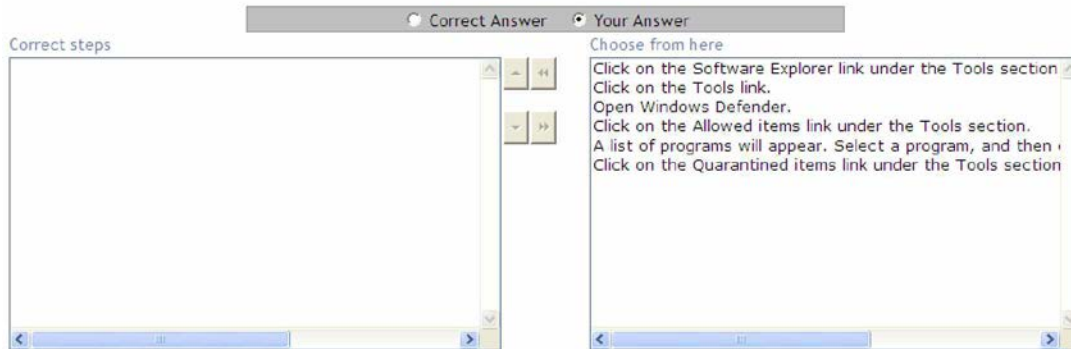
Windows Vista for the Business Worker

Answer:

The Quarantined items link will open a list of programs blocked by Windows Defender. The user can then select a program and restore it.

QUESTION:96

John works as a Network Administrator for Blue Well Inc. All client computers in the company run the Windows Vista operating system. He installs an application on his computer. The application is not running properly. Therefore, he wants to disable the application. What steps will he take to accomplish the task?



Answer:

John will click the Disable button in the Software Explorer page to Disable the application running on his computer.

Windows Defender is a software product designed by Microsoft to provide continuous security against malware. If it detects anything suspicious, an alert will appear on the screen. Windows Defender can also be used to scan a computer for suspicious software. It can remove or quarantine any malware or spyware it finds.

The Quarantined items link will open the Quarantined items page that will help a user to remove or restore software that Windows Defender has prevented from running.

The Allowed items link will open the Allowed items page that will help a user to view software that are not monitored with Windows Defender.

QUESTION: 97

Sam works as an Office Assistant in Soft Tech Inc. Whenever he clicks a link in the Web site of the company, he gets the following message and nothing happens.

The screenshot shows a browser warning message: "Pop-up blocked. To see this pop-up or additional options click here...". The message is displayed in a yellow box with a warning icon on the left.

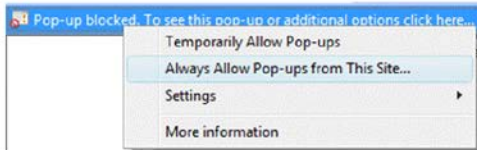
Which of the following actions will he take to resolve the issue?

- A: Click the warning message, and select the Temporarily Allow Pop-ups option.
- B: Set the Internet zone security settings to Low.
- C: Click the warning message, and select the Always Allow Pop-ups from This Site option.
- D: Add the currently opened site in the trusted site list.

Answer:

Answer option C is correct.

Sam is unable to view the link page because Internet Explorer has blocked pop-ups. In order to resolve the issue, Sam will have to click the warning message and select the Always Allow Pop-ups from This Site option.

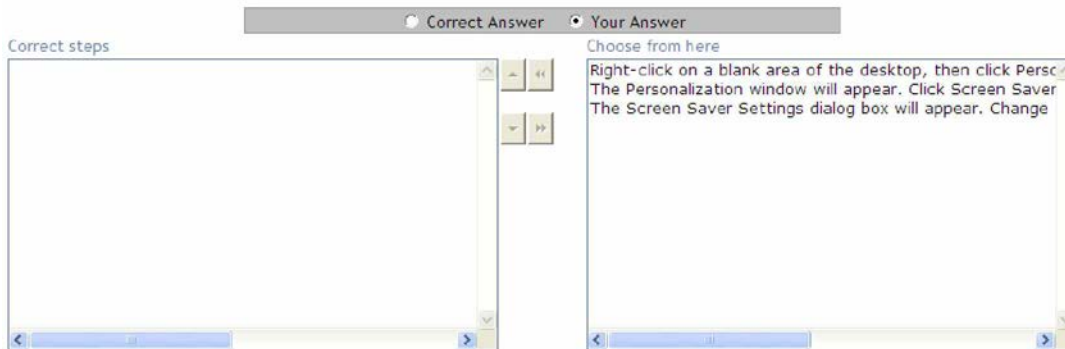


Answer options D and B are incorrect. These actions will reduce the security of the system.

Answer option A is incorrect. This action will temporarily open up the pop-ups for the site. However, if Sam visits the site any other time, Internet Explorer will again block the pop-ups for this site.

QUESTION: 98

John works as a Network Administrator for Blue Well Inc. All client computers in the company run the Windows Vista operating system. He wants to set a time after which a screen saver automatically appears on the screen. What steps will he take to accomplish the task?

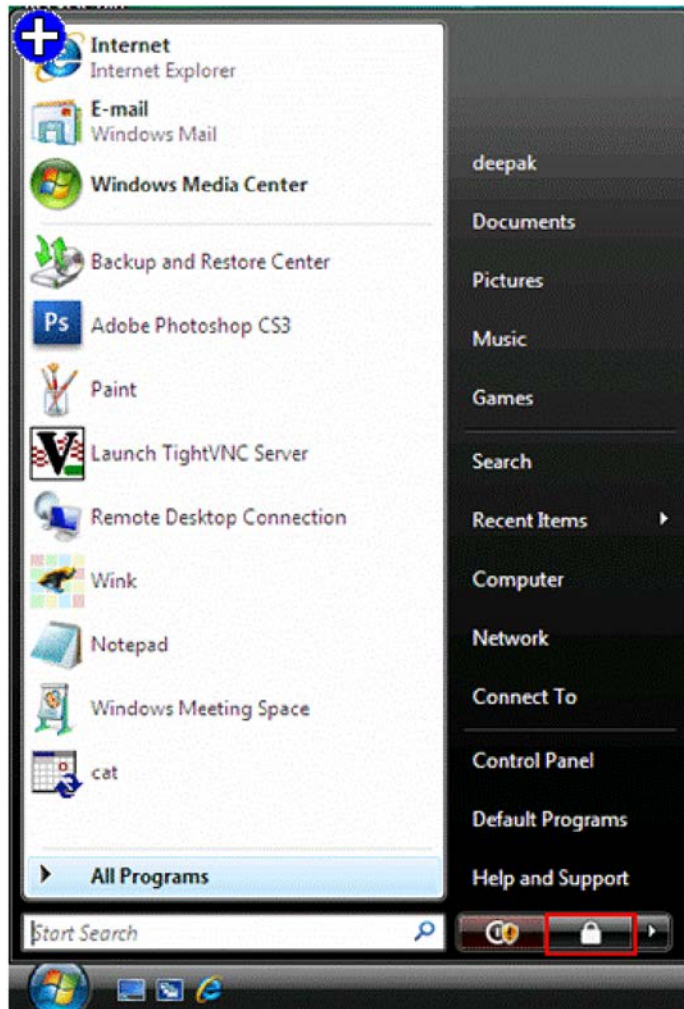


Answer:


Delay time is the time after which a screen saver automatically appears on the screen.

QUESTION:99

John works as an Office Assistant in Soft Well inc. All client computers in the company run the Windows Vista operating system. He needs to leave office for an hour to run an errand. He is processing some data and wants his application to be active in his absence. Due to security issue, he do not want anybody to access his computer. Mark the item he should select to accomplish this task.



Answer:

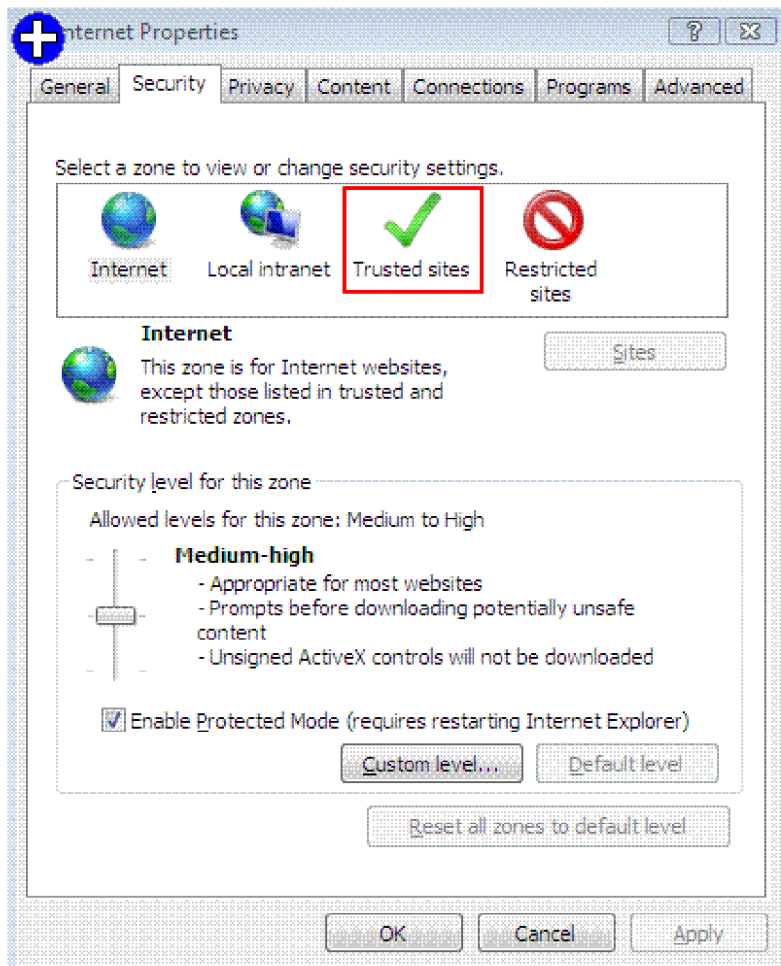
The lock button  is used to lock a computer. When the user presses the lock button, the computer is locked and only the user who knows the password can unlock it. The applications also keep running while the computer is locked. It provides security in the way that no one can access the data of another user if the computer is locked.

A user will not log off from his computer because it will close all the applications running on the computer.

A user will not shut down his computer because it will close all the applications running on the computer.

QUESTION: 100

John works as a Network Administrator for BlueWell Inc. All client computers in the company run the Windows Vista operating system. He feels that a particular Web site is safe and will not harm the network of the company. He opens the Internet Properties dialog box. Mark the zone in which he will put the URL of the Web site.

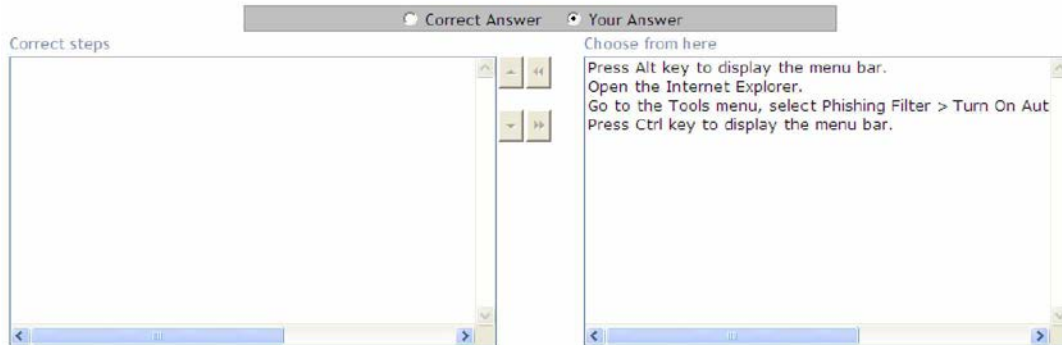


Answer:

The Trusted sites zone contains Web sites that are designated as trustworthy by a user.

QUESTION: 101

Sam works as a Network Administrator for BlueWell Inc. All client computers in the company run Windows Vista operating system. The computers in the company are continuously connected to the Internet. He wants to protect the computers of the company from fraudulent sites. He decided to turn on the Phishing Filter. What steps will he take to turn on the Phishing Filter?



Answer:

Phishing Filter is a feature in Internet Explorer that helps in detecting phishing Web sites. Whenever a user visits a Web site, Phishing Filter compares the address of the Web site with a list of sites reported to Microsoft as legitimate. This list is stored on the user's computer locally. Further, it helps the user to analyze a site to know whether it is a phishing Web site. If it suspects that it is not a phishing site, it sends the Web site address to Microsoft with the user's consent for further checking against a frequently updated list of reported phishing Web sites. If the address is found in the list of reported phishing Web sites, Internet Explorer displays a warning Web page and a notification on the Address bar. Based on this information, the user can continue or close the page. In case the Web site contains characteristics common to a phishing site but is not on the list, Internet Explorer notifies in the Address bar that it might possibly be a phishing Web site.

QUESTION: 102

Sam works as an Office Assistant for SoftTech Inc. All client computers of the company run the Windows Vista operating system. He wants to configure his computer in such a manner that whenever he presses the power button of his computer, it shuts down. When he boots the computer again, he wants to restore all applications and files in the same state as they were before the computer was shut down. He also wants to ensure that during the inactive period, no power is used. Which of the following actions will he take to accomplish the task?

- A: Configure the power plan settings to put the computer in sleep mode when the power button is pressed.
- B: Configure the power plan settings to Do nothing when the power button is pressed.
- C: Configure the power plan settings to shut down the computer when the power button is pressed.
- D: Configure the power plan settings to put the computer in hibernate mode when the power button is pressed.

Answer:

Answer option D is correct.

Hibernate mode is a power saving feature for computers. In hibernate mode, the current state of a computer is saved to the hard disk, and the computer shuts down. A user will have to power on the computer to restore the previous settings. When a computer resumes from hibernate mode, it reads the saved settings from the disk and restores the system state as it was before it entered hibernate mode.

Answer option C is incorrect. When a computer simply shuts down, it does not preserve the state of applications and files.

Answer option A is incorrect. Sleep mode is the state of a computer where it requires a small amount of power needed to keep available data in active memory. When a user presses a key on the keyboard, the computer awakes from sleep mode. The memory data is also written to a file and saved in the hard disk. If the computer is not awakened after fifteen minutes, the operating system puts the computer in hibernate mode, cuts the power, and discards the data in RAM.

Answer option B is incorrect. The Do nothing option will not preserve the state of applications and files. It will prevent the computer from shutting down even after pressing the power button.

QUESTION:103

George has recently bought a computer with Windows Vista Ultimate installed on it. He installed a new software on it. The software is creating some problems. He contacts a person to help him through Remote Assistance. He wants to enable Remote Assistance connection on his computer. What steps will he take to accomplish the task?

The screenshot shows a quiz interface with two tabs: 'Correct Answer' and 'Your Answer'. The 'Your Answer' tab is selected and contains the following text:

Choose from here

- In the System and Maintenance window, click System.
- Open Control Panel from the Start menu.
- In the Control Panel window, click System and Maintenance.
- In the Control Panel window, click Programs and Features.
- In the System Properties dialog box, click Allow Remote As
- In the System Properties dialog box, click Allow connection
- In the left pane of the System window, click Remote settir

Answer:

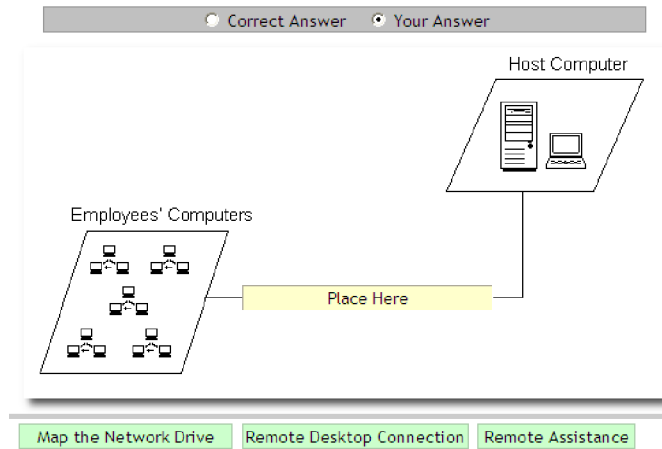
Take the following steps to accomplish the task:

1. Open Control Panel from the Start menu.
2. In the Control Panel window, click System and Maintenance.
3. In the System and Maintenance window, click System.
4. In the left pane of the System window, click Remote settings.
5. In the System Properties dialog box, click Allow Remote Assistance connections to this computer checkbox to insert a check mark, and click the OK button.

When the **Allow connections only from computers running Remote Desktop with Network Level Authentication (more secure)** radio button is selected, then only the selected users will be able to connect through Remote Assistance.

QUESTION: 104

Sam works as a Network Administrator for Blue Tech Inc. All client computers in the company run the Windows Vista operating system. He shared a hard-disk on the network of the company so that the employees could use the contents of the hard-disk. What will the employees of the company use to access the hard-disk?



Answer:

A Network Drive is a hard disk drive that is normally shared among several users over the network. A user can connect to the shared network hard disk drive if he has sufficient permission. It allows a user to access shared files and directories stored on the network drive.

QUESTION:105

Sam purchases a computer for himself. The computer has Windows Vista installed on it. He installs a new application on it and makes some changes to the display. Now he wants to save the current state of his computer so that he can restore his computer to the saved state. Which of the following will he use to accomplish the task?

- A: Restore point
- B: System Restore
- C: Windows Defender
- D: Compatibility mode

Answer:

Answer option A is correct.

A restore point is a saved "snapshot" of a computer's data at a specific time. Restore points are created by the System Restore utility at specific intervals, such as installing a new software. Restore points can also be created and named manually at any time. By creating a restore point, a user can save the state of the operating system and the data so that if future changes cause a problem, the system can be restored to its previous state without losing the data.

Answer option B is incorrect. System Restore is a feature of Windows Vista, which helps to restore a computer system to its previous state without losing any personal data files, such as e-mail, documents, or photos. System Restore uses a feature called System Protection to regularly create and save restore points on a computer. These restore points contain information about registry settings and other system information that Windows uses. These restore points are used to revert the system to its previous state. Restore points are created daily and at the time of major system events such as installation of an application or driver. Restore points can also be created and named manually at any time.

Answer option D is incorrect. Compatibility mode in Windows Vista is designed to allow a user to run programs that were written for earlier versions of Windows. Most programs written for earlier versions of Windows work on Windows Vista. However, some older programs might not run efficiently or do not run at all. If an older program does not run correctly, the program should be run in compatibility mode to simulate earlier versions of Windows.

Answer option C is incorrect. Windows Defender is a software product designed by Microsoft to provide continuous security against malware. If it detects anything suspicious, an alert will appear on the screen. Windows Defender can also be used to scan a computer for suspicious software. It can remove or quarantine any malware or spyware it finds.

Download Full Version From <https://www.certkillers.net>



DON'T KNOW
OR NO PREFERENCE

Pass your exam at First Attempt....Guaranteed!