



# Microsoft

## 70-487 Exam

### Microsoft Developing Windows Azure and Web Services Exam

Thank you for Downloading 70-487 exam PDF Demo

You can Buy Latest 70-487 Full Version Download

<https://www.certkillers.net/Exam/70-487>

<https://www.certkillers.net>

## Version: 12.0

---

### Question: 1

---

#### DRAG DROP

You need to configure the Windows Azure service definition to enable Consolidated Messenger to upload files.

What should you do? (To answer, drag the appropriate configuration items to the correct location or locations. Each configuration item may be used once, more than once, or not at all. You may need to drag the split bar between panes or scroll to view content.)

Answer Area

```
<Binding name="Website" endpointName="Website" />
<Binding name="Transfer" endpointName="Transfer" />
</Bindings>
</Site>
</Sites>
<Endpoints>
```

<  name="Website"

protocol="  "

port="  " />

<  name="Transfer"

protocol="  "

port="  " />

```
</Endpoints>
</WebRole>
```

---

**Answer:**

---

```
<Binding name="Website" endpointName="Website" />
<Binding name="Transfer" endpointName="Transfer" />
</Bindings>
</Site>
</Sites>
<Endpoints>

  < InputEndpoint      name="Website"

    protocol=" http
    port=" 80 " />

  < InputEndpoint      name="Transfer"

    protocol=" tcp
    port=" 22 " />

</Endpoints>
</WebRole>
```

---

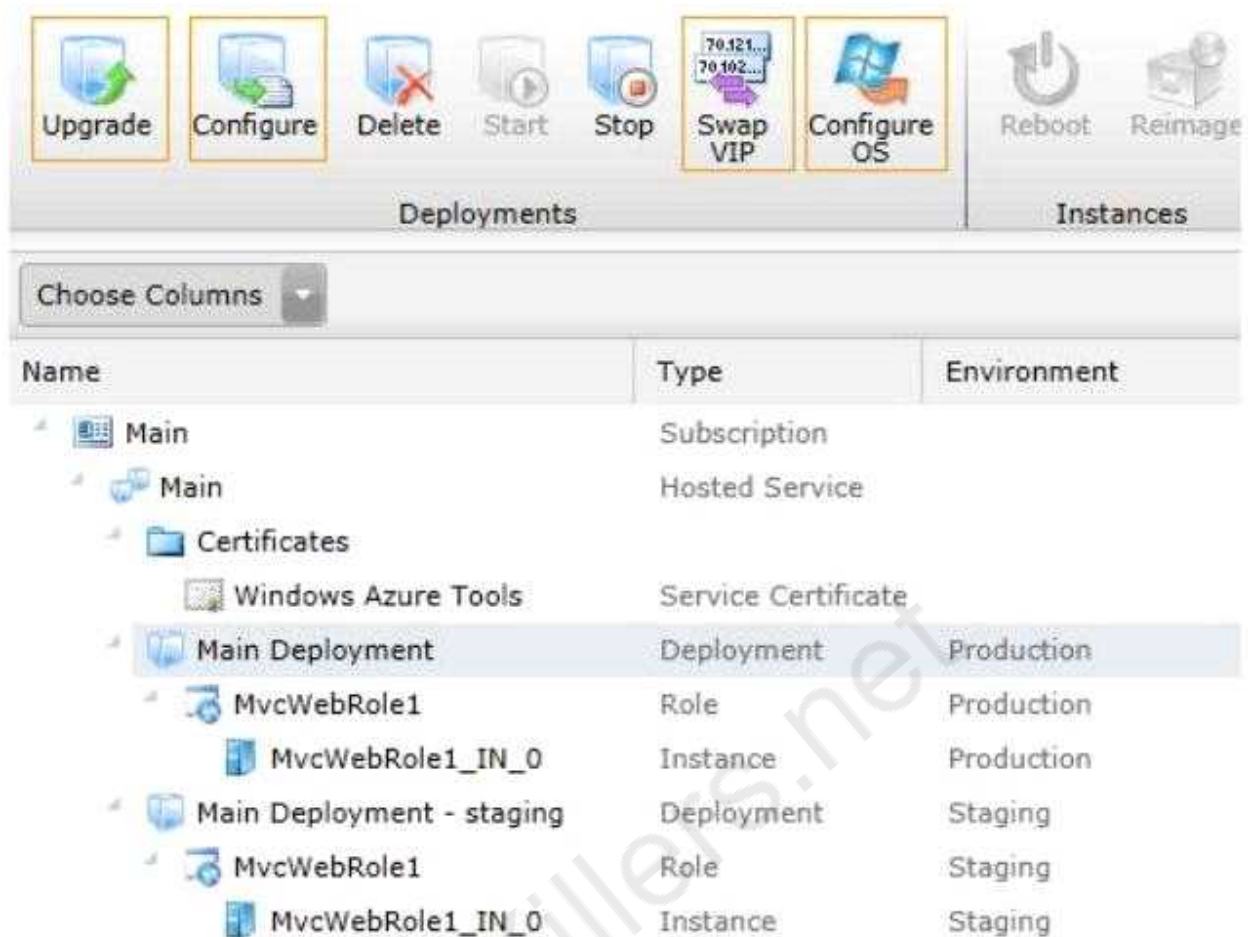
**Question: 2**

---

HOTSPOT

You need to deploy the application to the Windows Azure production environment to meet the business requirements.

What should you do? (To answer, select the appropriate button in the answer area.)



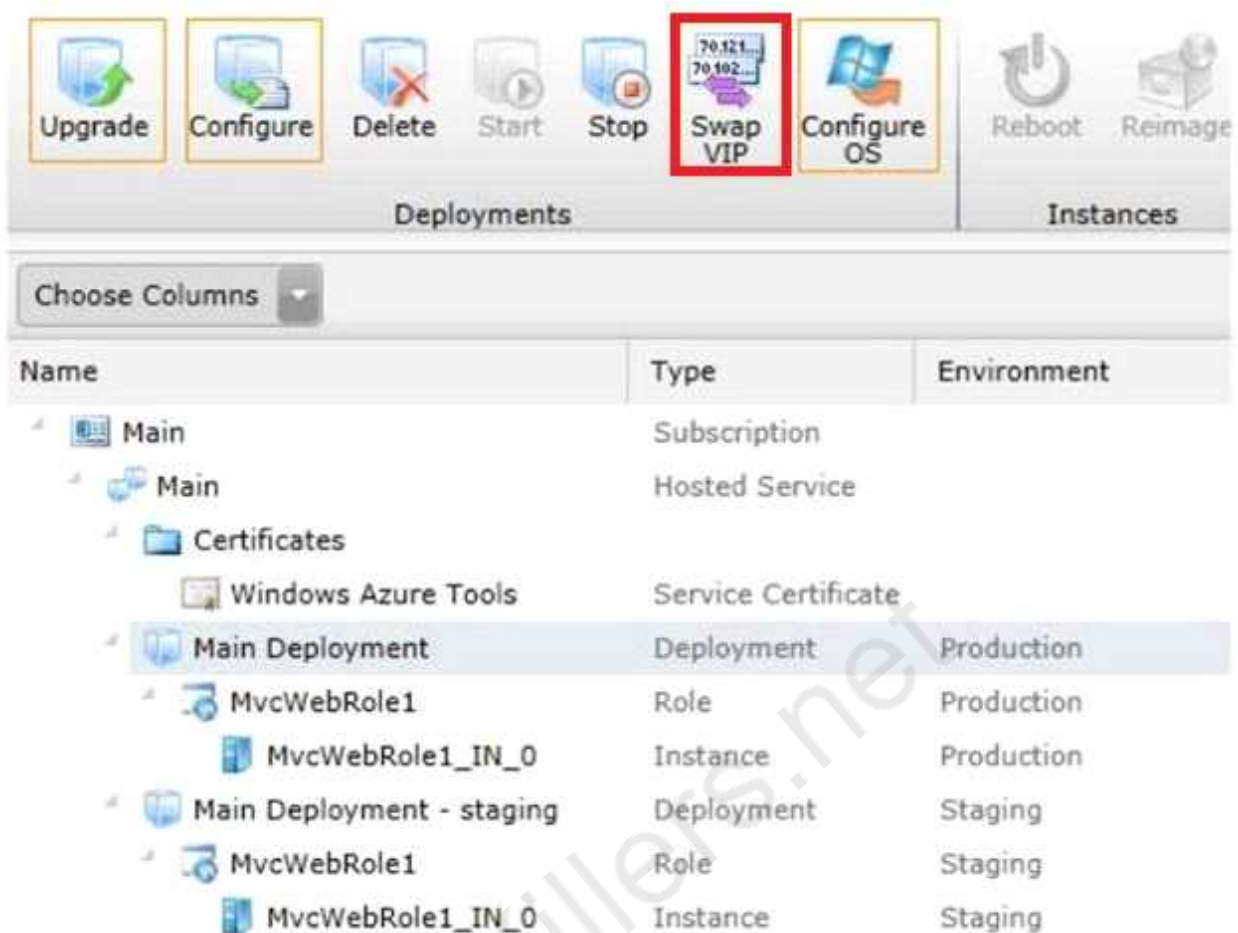
The screenshot displays the Azure Management Portal interface. At the top, there are two groups of icons: 'Deployments' and 'Instances'. The 'Deployments' group includes icons for Upgrade, Configure, Delete, Start, Stop, Swap VIP, and Configure OS. The 'Instances' group includes icons for Reboot and Reimage. Below these icons is a 'Choose Columns' dropdown menu. The main table below the dropdown has three columns: 'Name', 'Type', and 'Environment'. The table lists various Azure resources, including 'Main' (Subscription), 'Main' (Hosted Service), 'Certificates' (Service Certificate), 'Main Deployment' (Deployment, Production), 'MvcWebRole1' (Role, Production), 'MvcWebRole1\_IN\_0' (Instance, Production), 'Main Deployment - staging' (Deployment, Staging), 'MvcWebRole1' (Role, Staging), and 'MvcWebRole1\_IN\_0' (Instance, Staging). The 'Main Deployment' row is highlighted.

Name	Type	Environment
Main	Subscription	
Main	Hosted Service	
Certificates	Service Certificate	
Main Deployment	Deployment	Production
MvcWebRole1	Role	Production
MvcWebRole1_IN_0	Instance	Production
Main Deployment - staging	Deployment	Staging
MvcWebRole1	Role	Staging
MvcWebRole1_IN_0	Instance	Staging

---

**Answer:**

---



### Question: 3

You need to recommend a data access technology to the contractor to retrieve data from the new data source.

Which data access technology should you recommend?

- A. LINQ to XML
- B. ADO.NET Entity Framework
- C. ADO.NET DataSets
- D. WCF Data Services

**Answer: D**

### Question: 4

DRAG DROP

Flight information data provided by Margie's Travel is updated both locally and remotely. When the

data is synced, all changes need to be merged together without causing any data loss or corruption. You need to implement the Sync() method in the MargiesTravelSync.es file.

What should you do? (To answer, drag the appropriate code segments to the correct location or locations in the answer area)

a. Each code segment may be used once, more than once, or not at all. You may need to drag the split bar between panes or scroll to view content.)

Answer Area

```
public void Sync()
{
    var sendStream = SendStream();
    var receiveStream = ReceiveStream();
    var local = LoadLocal();

    local.WriteXml(sendStream, );
    local.ReadXml(receiveStream, );
}
```

**Answer:**

```
public void Sync()
{
    var sendStream = SendStream();
    var receiveStream = ReceiveStream();
    var local = LoadLocal();

    local.WriteXml(sendStream, XmlWriteMode.DiffGram );
    local.ReadXml(receiveStream, XmlReadMode.DiffGram );
}
```

<http://msdn.microsoft.com/en-us/library/ms135424.aspx>

### Question: 5

DRAG DROP

Historical flight information data will be stored in Windows Azure Table Storage using the FlightInfo class as the table entity.

There are millions of entries in the table. Queries for historical flight information specify a set of airlines to search and whether the query should return only late flights. Results should be ordered by flight name.

You need to specify which properties of the FlightInfo class should be used at the partition and row keys to ensure that query results are returned as quickly as possible.

What should you do? (To answer, drag the appropriate properties to the correct location or locations in the answer area)

a. Each property may be used once, more than once, or not at all. You may need to drag the split bar between panes or scroll to view content.)

Answer Area	
<b>Airline</b>	Use the <input type="text"/> property as the partition key.
<b>WasLate</b>	
<b>Flight</b>	Use the <input type="text"/> property as the row key.
<b>Arrival</b>	

---

**Answer:**

---

Airline  
Flight

---

**Question: 6**

---

DRAG DROP

The service has been deployed to Windows Azure.

Trey Research has provided version 1.3.0.0 of the assembly to support a change in the serialization format. The service must remain available during the transition to the new serialization format.

You need to ensure that the service is using the new assembly.

Which configuration setting should you add to the web.config? (To answer, drag the appropriate configuration elements to the correct location or locations in the answer area)

a. Each configuration element may be used once, more than once, or not at all. You may need to drag the split bar between panes or scroll to view content.)

codeBase version="1.3.0.0" href="Trey.Serialization.dll"

bindingRedirect oldVersion="1.2.5.0" newVersion="1.3.0.0"

bindingRedirect oldVersion="1.2.0.0" newVersion="1.3.0.0"

runtime

location

< >

<assemblyBinding xmlns="urn:schemas-microsoft-com:asm.v1">
 <dependentAssembly>
 <assemblyIdentity name="Trey.Serialization" />
 <

</dependentAssembly>
</assemblyBinding>

</ >

---

**Answer:**


---

runtime

<assemblyBinding xmlns="urn:schemas-microsoft-com:asm.v1">
 <dependentAssembly>
 <assemblyIdentity name="Trey.Serialization" />
 <
 bindingRedirect oldVersion="1.2.0.0" newVersion="1.3.0.0"
 >

</dependentAssembly>
</assemblyBinding>

runtime

Explanation:

See: <http://msdn.microsoft.com/en-us/library/7wd6ex19.aspx>



---

**Question: 7**

---

Errors occasionally occur when saving data using the FlightInfoContext ADO.NET Entity Framework context. Updates to the data are being lost when an error occurs.

You need to ensure that data is still saved when an error occurs by retrying the operation. No more than five retries should be performed.

Which code segment should you use as the body of the SaveChanges() method in the FlightInfoContext.es file?

- ☐ A. 

```
for (var i = 0; i < 5; i++)
{
    try
    {
        return base.SaveChanges();
    }
    catch (SqlException ex)
    {
        if (IsTransient(ex.Number))
        {
            continue;
        }
    }
}
return base.SaveChanges();
```
- ☐ B. 

```
var exception = new EntitySqlException();
while (exception.Data != 0 && exception.Data.Count < 5)
{
    try
    {
        return base.SaveChanges();
    }
    catch (EntitySqlException ex)
    {
        if (IsTransient(ex.HResult))
        {
            exception = ex;
        }
    }
}
return base.SaveChanges();
```

```
C C. for (var i = 0; i < 5; i++)
{
    try
    {
        return base.SaveChanges();
    }
    catch (SqlException ex)
    {
        if (IsTransient(ex.Number))
        {
            break;
        }
    }
}
return base.SaveChanges();
```

```
D. for (var i = 0; i < 5; i++)
{
    try
    {
        return base.SaveChanges();
    }
    catch (SqlException ex)
    {
        if (!IsTransient(ex.Number))
        {
            continue;
        }
    }
}
return base.SaveChanges();
```

- A. Option A
- B. Option B
- C. Option C
- D. Option D

---

**Answer: A**

---

---

### Question: 8

---

You are adding a new REST service endpoint to the FlightDataController controller. It returns flights from the consolidated data sources only for flights that are late.

You need to write a LINQ to Entities query to extract the required data.

Which code segment should you use?

- ☐ A. 

```
var historical = LoadHistorical();  
var query = _Context.FlightInfo.AsQueryable()  
    .Join(historical, x => x.Flight, y => y.Flight, (x, y) => new { Current = x,  
    Historical = y })  
    .Where(x => x.Historical.WasLate)  
    .Select(x => x.Current);
```
- ☐ B. 

```
var historical = LoadHistorical();  
var query = _Context.FlightInfo.AsEnumerable()  
    .Where(x => historical.All(y => y.WasLate && x.Flight == y.Flight))  
    .Select(x => x);
```
- ☐ C. 

```
var historical = LoadHistorical();  
var query = _Context.FlightInfo.AsQueryable()  
    .Where(x => historical.Select(y => y.Flight).Contains(x.Flight))  
    .Where(x => historical.Any(y => y.WasLate))  
    .Select(x => x);
```
- ☐ D. 

```
var historical = LoadHistorical();  
var query = _Context.FlightInfo.AsEnumerable()  
    .Join(historical, x => x.Flight, y => y.Flight, (x, y) => new { Current = x,  
    Historical = y })  
    .Where(x => x.Historical.WasLate)  
    .Select(x => x.Current);
```

- A. Option A  
B. Option B  
C. Option C  
D. Option D

---

**Answer: D**

---

Explanation:

D is right because you send result as REST so if you use "AsQueryable" the result is deferred to the next enumeration of your result.

D is not optimized but will work.

A will break at runtime.

Credits to Rem

---

### Question: 9

---

Data provided by Consolidated Messenger is cached in the HttpContext.Cache object.

You need to ensure that the cache is correctly updated when new data arrives.

What should you do?

- A. Ensure that the EffectivePrivateBytesLimit value is greater than the size of the database file.  
B. Change the sliding expiration of the cache item to 12 hours.  
C. Use the SqlCacheDependency type configured with a connection string to the database file.  
D. Use the CacheDependency type configured to monitor the SFTP target folder.

---

**Answer: D**

---

---

**Question: 10**

---

You need to load flight information provided by Consolidated Messenger.  
Which should you use?

- A. SQL Server Data Transformation Services (DTS)
- B. EntityTransaction and EntityCommand
- C. Office Open XML
- D. OleDbConnection and OleDbDataReader

---

**Answer: D**

---

CertKillers.net

## Thank You for trying 70-487 PDF Demo

To Buy Latest 70-487 Full Version Download visit link below

<https://www.certkillers.net/Exam/70-487>

## Start Your 70-487 Preparation

[Limited Time Offer] Use Coupon “CKNET” for Further discount on your purchase. Test your 70-487 preparation with actual exam questions.

<https://www.certkillers.net>