



# Microsoft

## 70-410 Exam

### Microsoft Installing and Configuring Windows Server 2012 Exam

Thank you for Downloading 70-410 exam PDF Demo

You can Buy Latest 70-410 Full Version Download

<https://www.certkillers.net/Exam/70-410>

<https://www.certkillers.net>

## Version: 35.0

---

### Question: 1

---

You have a server named Server1 that runs Windows Server 2012 R2. Server1 has the Hyper-V server role installed.

An iSCSI SAN is available on the network.

Server1 hosts four virtual machines named VM1, VM2, VM3, and VM4.

You create a LUN on the SAN to host the virtual hard drive files for the virtual machines.

You need to create a 3-TB virtual hard disk for VM1 on the LUN. The solution must prevent VM1 from being paused if the LUN runs out of disk space.

Which type of virtual hard disk should you create on the LUN?

- A. Dynamically expanding VHDX
- B. Fixed-size VHDX
- C. Fixed-size VHD
- D. Dynamically expanding VHD

---

**Answer: B**

---

Explanation:

The virtual disk needs to be a VHDX file since it is going to be over 2TB in size and it must be fixed-size so that the space is already taken on the server (that way the server does not run out of space as the volume grows) even if the actual virtual disk does not yet hold that amount of data.

---

### Question: 2

---

Your network contains an Active Directory domain named adatum.com. The domain contains a member server named Host1. Host1 runs Windows Server 2012 R2 and has the Hyper-V server role installed.

Host1 hosts two virtual machines named VM5 and VM6. Both virtual machines connect to a virtual switch named Virtual1.

On VM5, you install a network monitoring application named Monitor1.

You need to capture all of the inbound and outbound traffic to VM6 by using Monitor1.

Which two commands should you run from Windows PowerShell? (Each correct answer presents part of the solution. Choose two.)

- A. Get-VM "VM6" | Set-VMNetworkAdapter-iovWeight 1
- B. Get-VM "VM5" | Set-VMNetworkAdapter -iovWeight 0
- C. Get-VM "VM5" | Set-VMNetworkAdapter -PortMirroring Source
- D. Get-VM "VM6" | Set-VMNetworkAdapter -AllowTeaming On
- E. Get-VM "VM6" | Set-VMNetworkAdapter -PortMirroring Destination
- F. Get-VM "VM5" | Set-VMNetworkAdapter -AllowTeaming On

---

**Answer: C, E**

---

Explanation:

-PortMirroring specifies the port mirroring mode for the network adapter. This can be set to None, Source, and Destination.

If set to Source, a copy of every network packet it sends or receives is forwarded to a virtual network adapter configured to receive the packets.

If set to Destination, it receives copied packets from the source virtual network adapter.

In this scenario, VM5 is the destination which must receive a copy of the network packets from VM6, which is the source.

Reference: <http://technet.microsoft.com/en-us/library/hh848457.aspx>

---

**Question: 3**

---

You have a Hyper-V host named Server1 that runs Windows Server 2012 R2. Server1 has the virtual switches listed in the following table.

Virtual switch name	Virtual switch type	Physical network adapter name
vSwitch1	External	NIC1
vSwitch2	External	NIC2

You create a virtual machine named VM1. VM1 has two network adapters. One network adapter connects to vSwitch1. The other network adapter connects to vSwitch2. You configure NIC teaming on VM1.

You need to ensure that if a physical NIC fails on Server1, VM1 remains connected to the network. What should you do on Server1?

- A. Run the Set-VmNetworkAdaptercmdlet.
- B. Add a new network adapter to VM1.
- C. Create a new virtual switch on Server 1.
- D. Modify the properties of vSwitch1 and vSwitch2.

---

**Answer: A**

---

---

**Question: 4**

---

Your network contains two Hyper-V hosts that run Windows Server 2012 R2. The Hyper-V hosts contain several virtual machines that run Windows Server 2012 R2.

You install the Network Load Balancing feature on the virtual machines.

You need to configure the virtual machines to support Network Load Balancing (NLB).

Which virtual machine settings should you configure?

- A. DHCP guard
- B. Port mirroring
- C. Router guard
- D. MAC address

---

**Answer: D**

---

Explanation:

<http://social.technet.microsoft.com/Forums/windowsserver/en-US/5b3a0a9d-26a2-49ba-bbbe-29d11fcbb7ce/nlb-on-hyperv?forum=winserverhyperv>

For NLB to be configured you need to enable MAC address spoofing.

---

**Question: 5**

---

You have a server named Server1 that runs Windows Server 2012 R2. Server1 has the Hyper-V server role installed. Server1 is connected to two Fibre Channel SANs and is configured as shown in the following table.

Host bus adapter (HBA) name	Fibre Channel SAN name
HBA1	SAN1
HBA2	SAN2
HBA3	SAN1
HBA4	SAN2

You have a virtual machine named VM1.

You need to configure VM1 to connect to SAN1.

What should you do first?

- A. Add one HBA
- B. Create a Virtual Fibre Channel SAN.
- C. Create a Hyper-V virtual switch.
- D. Configure network adapter teaming.

---

**Answer: B**

---

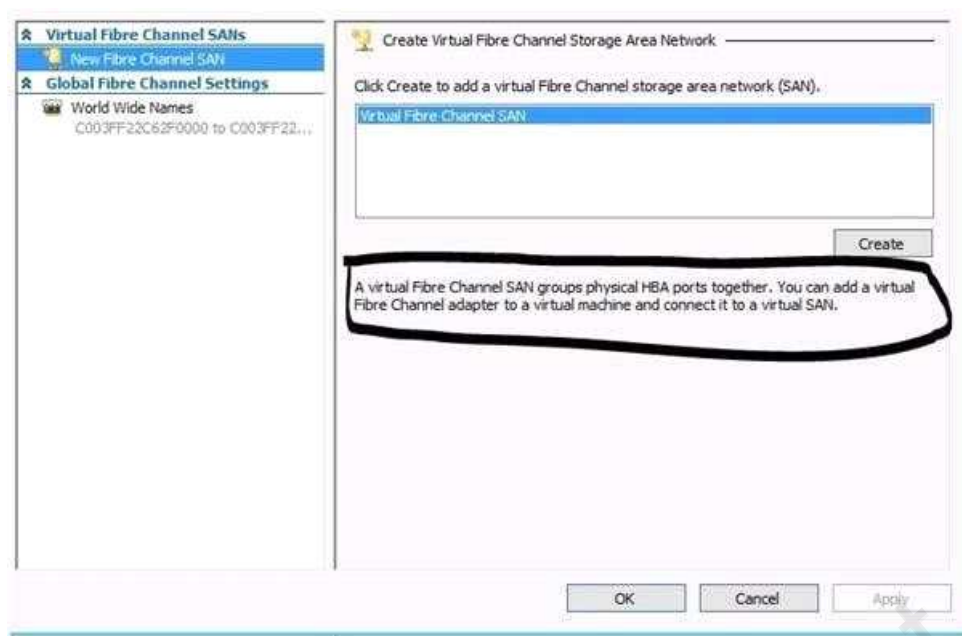
Explanation:

You need your virtualized workloads to connect easily and reliably to your existing storage arrays.

Windows Server 2012 provides Fibre Channel ports within the guest operating system, which allows you to connect to Fibre Channel directly from within virtual machines. This feature protects your investments in Fibre Channel, enables you to virtualize workloads that use direct access to Fibre Channel storage, allows you to cluster guest operating systems over Fibre Channel, and provides an important new storage option for servers hosted in your virtualization infrastructure.

With this Hyper-V virtual Fibre Channel feature, you can connect to Fibre Channel storage from within a virtual machine. This allows you to use your existing Fibre Channel investments to support virtualized workloads.

Support for Fibre Channel in Hyper-V guests also includes support for many related features, such as virtual SANs, live migration, and MPIO.



---

**Question: 6**

---

Your network contains an Active Directory domain named contoso.com. The domain contains a server named Server1. Server1 runs Windows Server 2012 R2 and has the Hyper-V server role installed.

On Server1, you create and start a virtual machine named VM1. VM1 is configured as shown in the following table.

Setting	Configuration
Minimum RAM	2048 MB
Maximum RAM	4096 MB
Disk type	Fixed size
Disk size	100 GB

You need to recommend a solution to minimize the amount of disk space used for the checkpoint of VM1.

What should you do before you create the checkpoint?

- A. Run the Resize-VHD cmdlet.
- B. Convert Disk1.vhd to a dynamically expanding disk.
- C. Shut down VM1.
- D. Run the Convert-VHD cmdlet.

---

**Answer: C**

---

Explanation:

Changing between a fixed and dynamic disk type does not alter the size of a SNAPSHOT much at all. However, since a snapshot is a record of a VM's state at the exact time that the snapshot was taken, shutting down the VM before taking the snapshot prevents the snapshot from having to contain all of

the data in RAM (as there is no data in memory when a machine is powered down).

The question states that the solution should minimize the amount of disk space used for the checkpoint of VM1. If the checkpoint is taken while VM1 is running, there will be two attritional files present at the checkpoint location; a .VSV with VM1 saved state files and a .BIN file which contains VM1's memory contents. If, however, VM1 is shut down first, these files will not be created, thus saving disk space.

In order to convert Disk1.vhd to a dynamically expanding disk, VM1 still have to be shut down.

---

**Question: 7**

---

**HOTSPOT**

You have a Hyper-V host named Hyperv1 that runs Windows Server 2012 R2. Hyperv1 hosts a virtual machine named Server1. Server1 uses a disk named Server1.vhdx that is stored locally on Hyperv1.

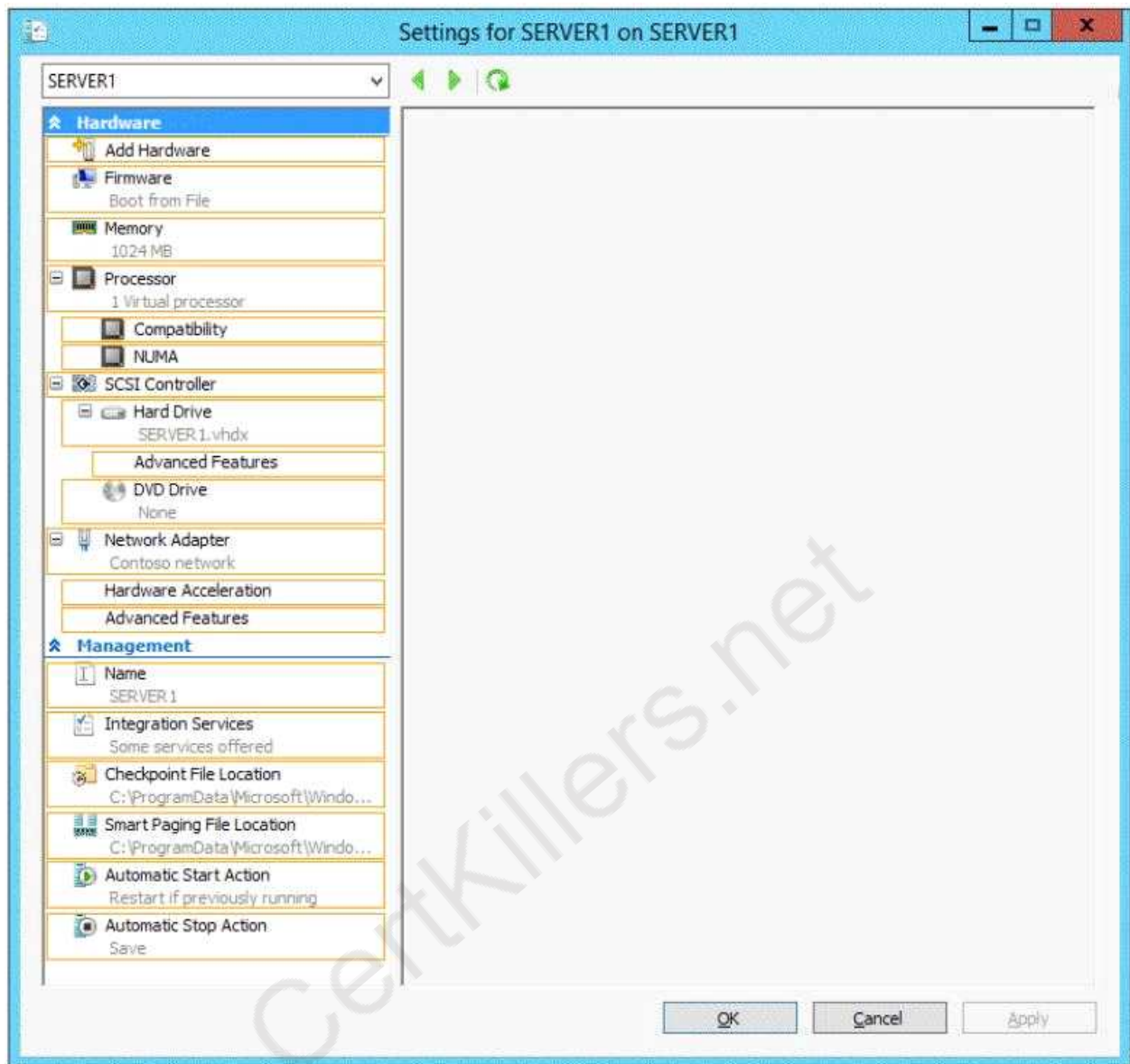
You stop Server1, and then you move Server1.vhdx to an iSCSI target that is located on another server.

You need to configure Server1 to meet the following requirements:

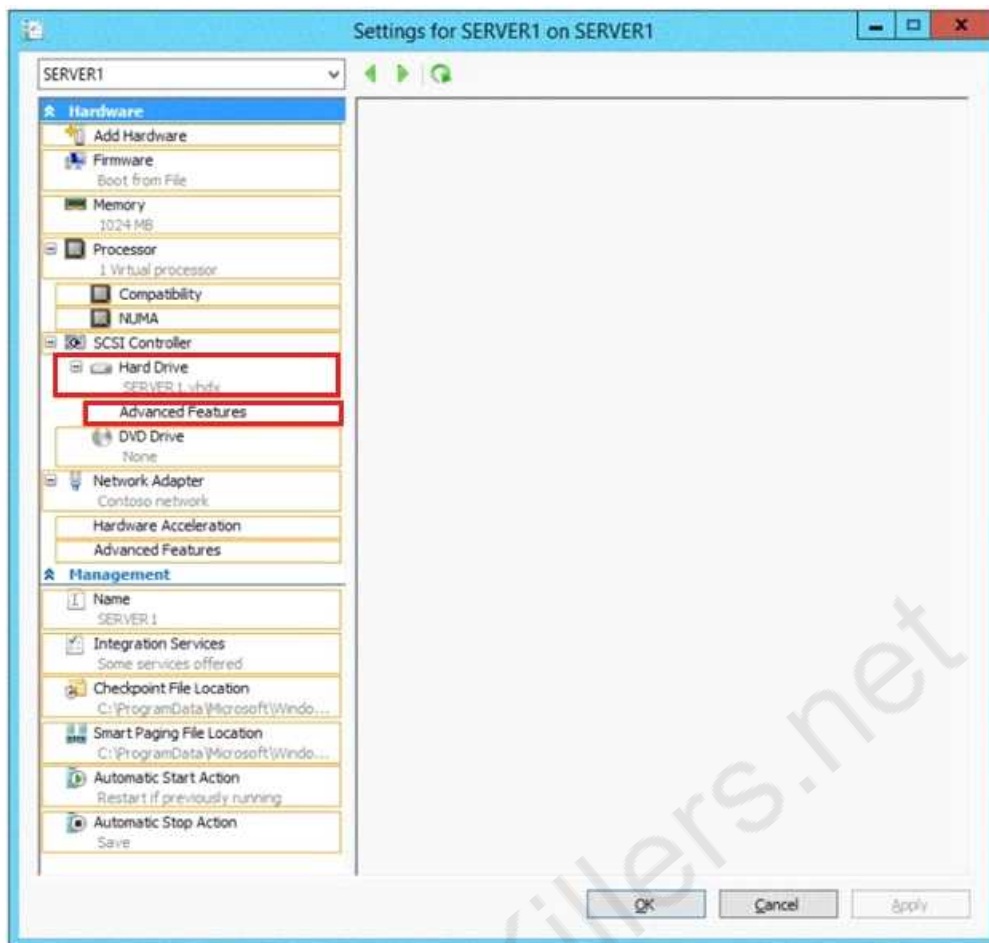
Ensure that Server1 can start by using Server1.vhdx.

Prevent Server1.vhdx from consuming more than 500 IOPS on the iSCSI target.

Which two objects should you configure? To answer, select the appropriate two objects in the answer area.



**Answer:**



---

**Question: 8**

You have a print server named Server1 that runs Windows Server 2012 R2.

You discover that when there are many pending print jobs, the system drive occasionally runs out of free space.

You add a new hard disk to Server1. You create a new NTFS volume.

You need to prevent the print jobs from consuming disk space on the system volume.

What should you modify?

- A. The properties on the new volume
- B. The properties of the Print Spooler service
- C. The Print Server Properties
- D. The properties of each shared printer

---

**Answer: C**

---

Explanation:

Windows spools print jobs by default to the following directory as they are processed:

%SystemRoot%\SYSTEM32\SPOOL\PRINTERS.

It is possible for the administrator of a Windows print server to manually instruct Windows the location for placing the spool files, if for example there is a concern for disk space.



---

**Question: 9**

---

**HOTSPOT**

A printer named Printer1 is configured as shown in the exhibit. (Click the Exhibit button.)





```
Administrator: Windows PowerShell
PS C:\> Get-Printer Printer1 | Format-List

Name                : Printer1
ComputerName        :
Type                : Local
ShareName            : Printer1
PortName             : LPT1:,LPT2:
DriverName           : Brother Color Leg Type1 Class Driver
Location             :
Comment              :
SeparatorPageFile    :
PrintProcessor       : winprint
Datatype             : RAW
Shared               : True
Published            : False
PermissionSDDL       :
RenderingMode        :
KeepPrintedJobs      : False
Priority              : 1
DefaultJobPriority    : 0
StartTime            : 1000
UntilTime            : 60
PrinterStatus        : Paused
JobCount             : 1
DisableBranchOfficeLogging :
BranchOfficeOfflineLogSizeMB :
```

To answer, complete each statement according to the information presented in the exhibit. Each correct selection is worth one point.

**Answer Area**

If a user prints a document to  

Users can submit print jobs to  

**Answer Area**

If a user prints a document to Printer1, the document will ...

remain in the print queue.  
print immediately on LPT1.  
print immediately on LPT2.

Users can submit print jobs to Printer1 ...

at any time.  
at no time.  
between 01:00 and 10:00.  
between 10:00 and 17:00.

**Answer:****Answer Area**

If a user prints a document to Printer1, the document will ...

remain in the print queue.  
print immediately on LPT1.  
print immediately on LPT2.

Users can submit print jobs to Printer1 ...

at any time.  
at no time.  
between 01:00 and 10:00.  
between 10:00 and 17:00.

**Explanation:**

- \* The printer is paused.

- \* Jobs can always be permitted (even if the printer is paused, or printer not started).

**Note:****StartTime**

Date and time that a printer can start to print a job — if the printer is limited to print at specific times. This value is expressed as the time elapsed since 12:00 AM GMT (Greenwich Mean Time).

This is sort of a trick question. As it stands, when the PowerShell script was executed, the printer is in "Paused" status, so any submitted job will go to the queue and remain there until the status is "Available". As for the ability to submit a job, a user can SUBMIT the job at any time. If it is outside of the printer's availability range, it will simply remain in the queue until the printer's start time is reached.

**Question: 10****HOTSPOT**

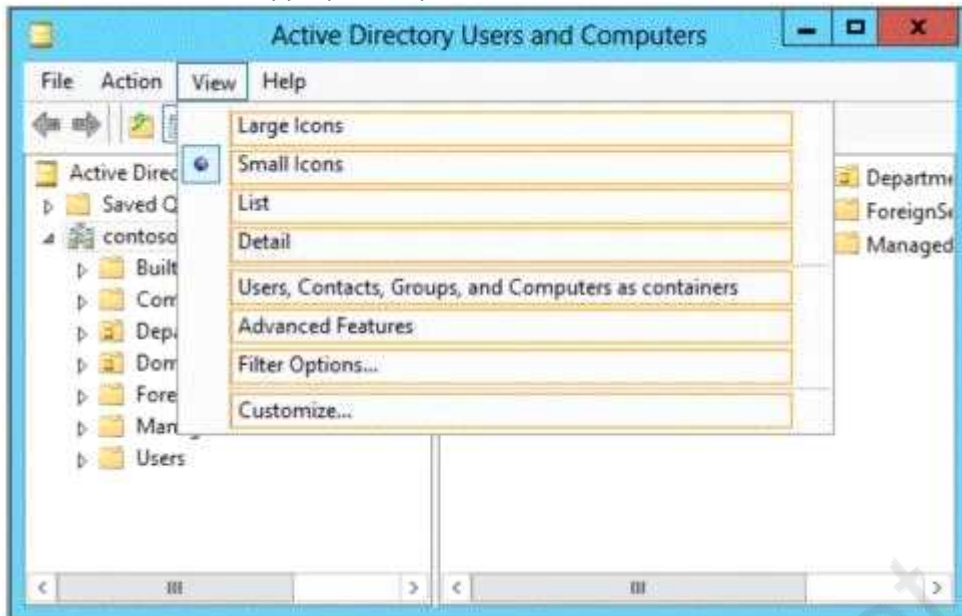
Your network contains an Active Directory domain named contoso.com. The domain contains a print server named Server1 that runs Windows Server 2012 R2.

You share several printers on Server1.

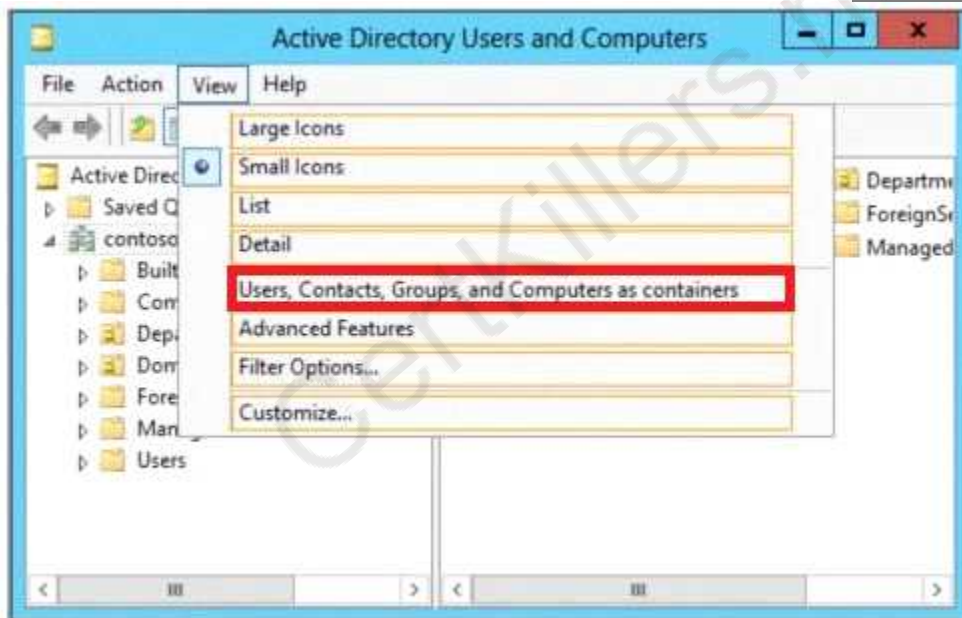
You need to ensure that you can view the printer objects associated to Server1 in Active Directory Users and Computers.

Which option should you select?

To answer, select the appropriate option in the answer area.



**Answer:**



Explanation:

You can view printer objects in Active Directory by clicking Users, Groups, and Computers as containers from the View menu in the Active Directory Users and Computers snap-in. By default, printer objects are created under the machine object in which they are shared. After you turn on the Users, Groups, and Computers as containers option, you can see printers by expanding the printer's host computer.

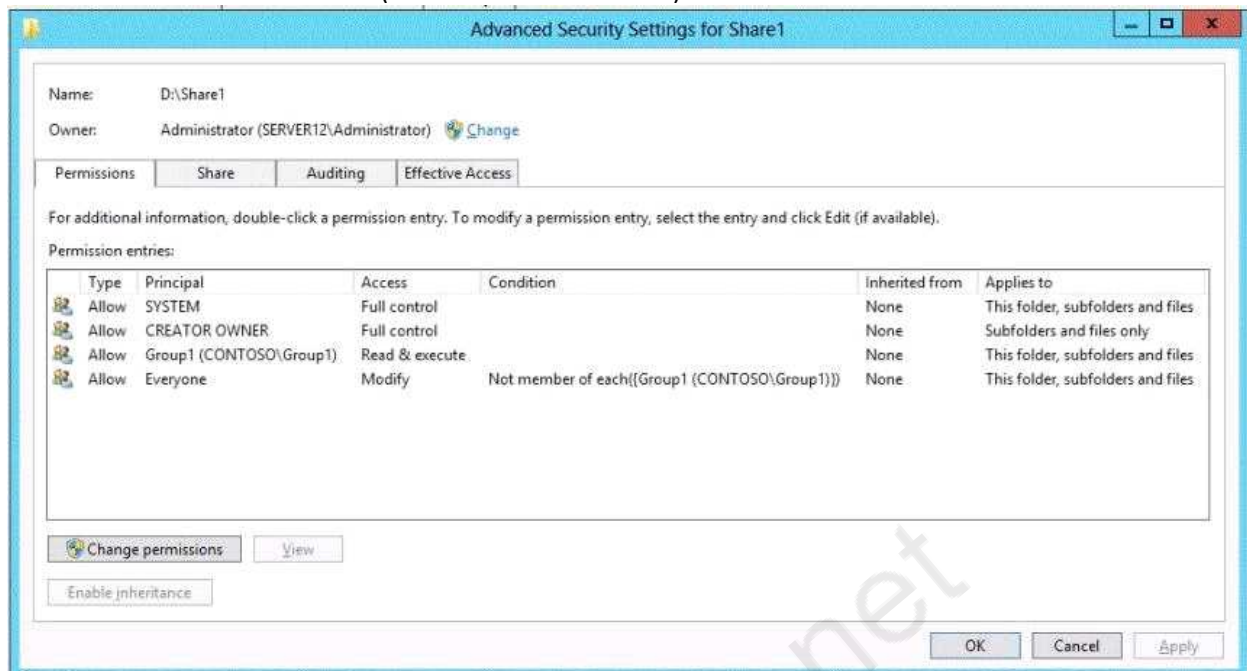
Reference: <http://support.microsoft.com/kb/235925>

---

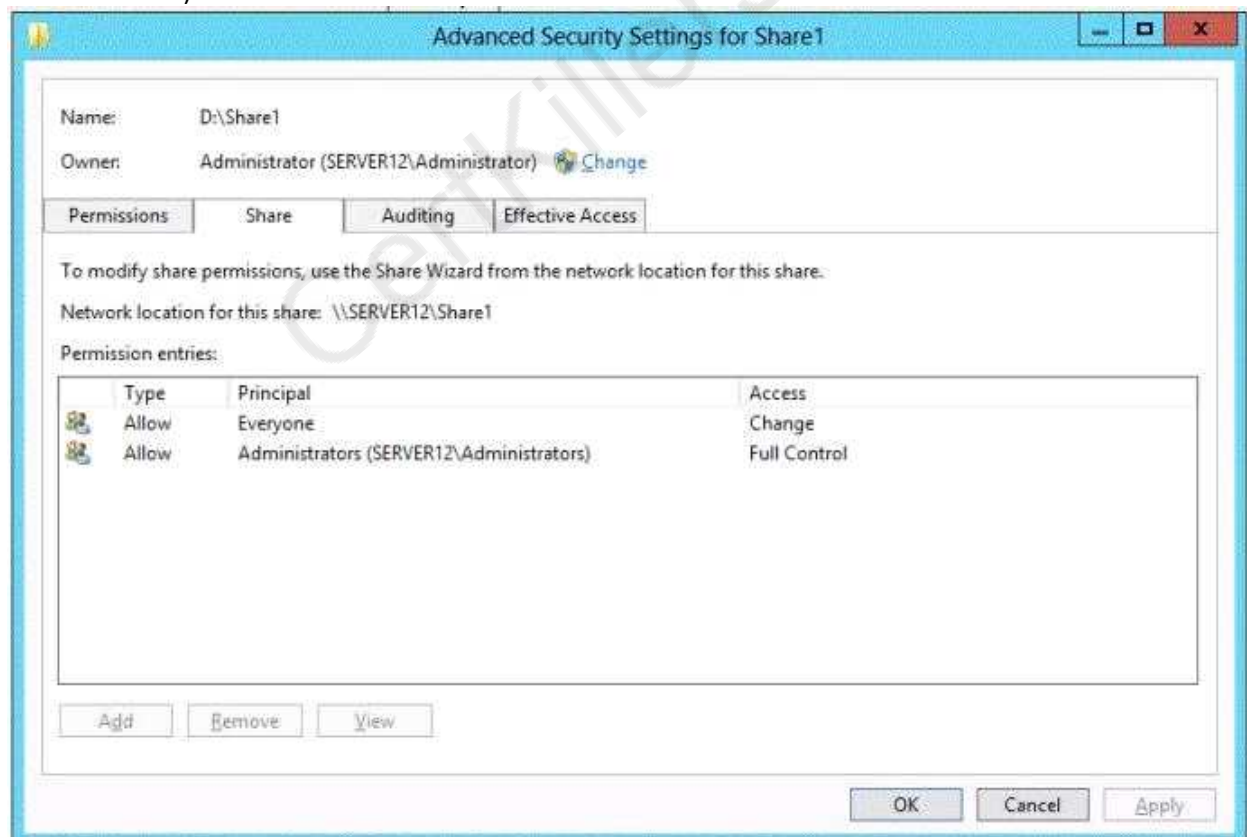
### Question: 11

HOTSPOT

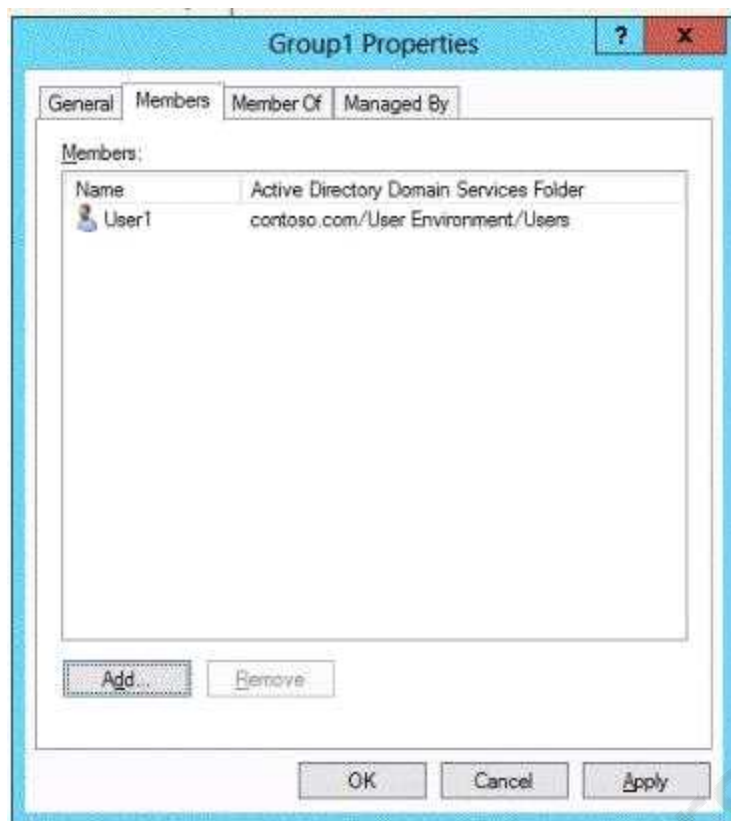
You have a shared folder named Share1. The folder permissions of Share1 are configured as shown in the Folder Permissions exhibit. (Click the Exhibit button.)



The Share permissions of Share1 are configured as shown in the Share Permissions exhibit. (Click the Exhibit button.)



You have a group named Group1. The members of Group1 are shown in the Group1 exhibit. (Click the Exhibit button.)



Select Yes if the statement can be shown to be true based on the available information; otherwise select No. Each correct selection is worth one point.

	Yes	No
CONTOSO\User1 will be able to delete the files in Share1.	<input type="radio"/>	<input type="radio"/>
CONTOSO\User2 will be able to delete the files in Share1.	<input type="radio"/>	<input type="radio"/>
CONTOSO\Administrator will be able to delete the files in Share1.	<input type="radio"/>	<input type="radio"/>

**Answer:**



	Yes	No
CONTOSO\User1 will be able to delete the files in Share1.	<input type="radio"/>	<input checked="" type="radio"/>
CONTOSO\User2 will be able to delete the files in Share1.	<input checked="" type="radio"/>	<input type="radio"/>
CONTOSO\Administrator will be able to delete the files in Share1.	<input checked="" type="radio"/>	<input type="radio"/>

Explanation:

NTFS permissions control access to the files and folders stored on disk volumes formatted with the NTFS file system. Share permissions control access to folders over a network. To access a file over a network, a user must have appropriate share permissions (and appropriate NTFS permissions if the shared folder is on an NTFS volume). Granting a user Full Control NTFS permission on a folder enables that user to take ownership of the folder unless the user is restricted in some other way. User1 was not granted Full Control permission.

The Administrators have Full Control permission. I assume that User2 is an administrator since the Group1 exhibit shows only User1 as a member.

References: <http://technet.microsoft.com/en-us/library/cc754178.aspx>

Exam Reference 70-410: Installing and configuring Windows Server 2012 R2, Chapter 2: Configure server roles and features, Objective 2.1: Configure file and share access, p.75-80

### Question: 12

Your network contains an Active Directory domain named adatum.com. The domain contains a server named Server1 that runs Windows Server 2012 R2.

On a server named Core1, you perform a Server Core Installation of Windows Server 2012 R2. You join Core1 to the adatum.com domain.

You need to ensure that you can use Event Viewer on Server1 to view the event logs on Core1.

What should you do on Core1?

- A. Run the Disable NetFirewallRule cmdlet.
- B. Install Remote Server Administration Tools (RSAT).
- C. Install Windows Management Framework.
- D. Run the Enable-Com + Network Access Firewall Rule.

**Answer: D**

Explanation:

Information regarding IPsec policy changes, etc. can be found in the Event Viewer. Thus you need to enable the NetFirewallRule command. This will allow you to view the event logs.

### Question: 13

Your network contains two servers named Server1 and Server2 that run Windows Server 2012 R2. Server1 and Server2 are part of a workgroup.

On Server1 and Server2, you create a local user account named Admin1. You add the account to the

local Administrators group. On both servers, Admin1 has the same password. You log on to Server1 as Admin1. You open Computer Management and you connect to Server2. When you attempt to create a scheduled task, view the event logs, and manage the shared folders, you receive Access Denied messages. You need to ensure that you can administer Server2 remotely from Server1 by using Computer Management. What should you configure on Server2?

- A. From Server Manager, modify the Remote Management setting.
- B. From Local Users and Groups, modify the membership of the Remote Management Users group.
- C. From Windows Firewall, modify the Windows Management Instrumentation (WMI) firewall rule.
- D. From Registry Editor, configure the LocalAccountTokenFilterPolicy registry value.

---

**Answer: D**

---

Explanation:

The LocalAccountTokenFilterPolicy setting affects how administrator credentials are applied to remotely administer the computer.

Reference: <http://support.microsoft.com/kb/942817>

---

**Question: 14**

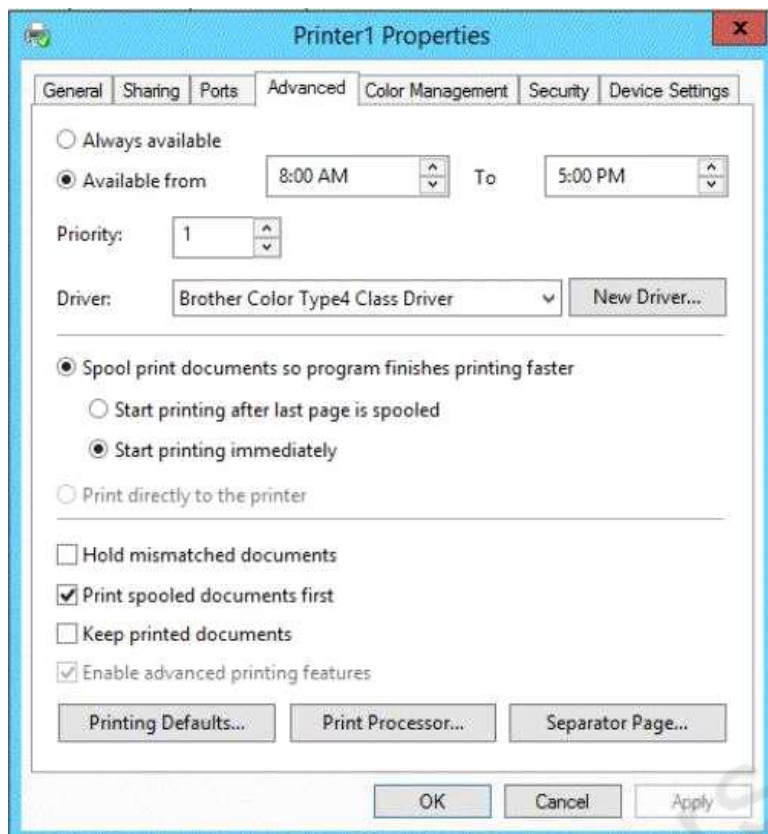
---

HOTSPOT

You have a print server named Server1 that runs Windows Server 2012 R2.

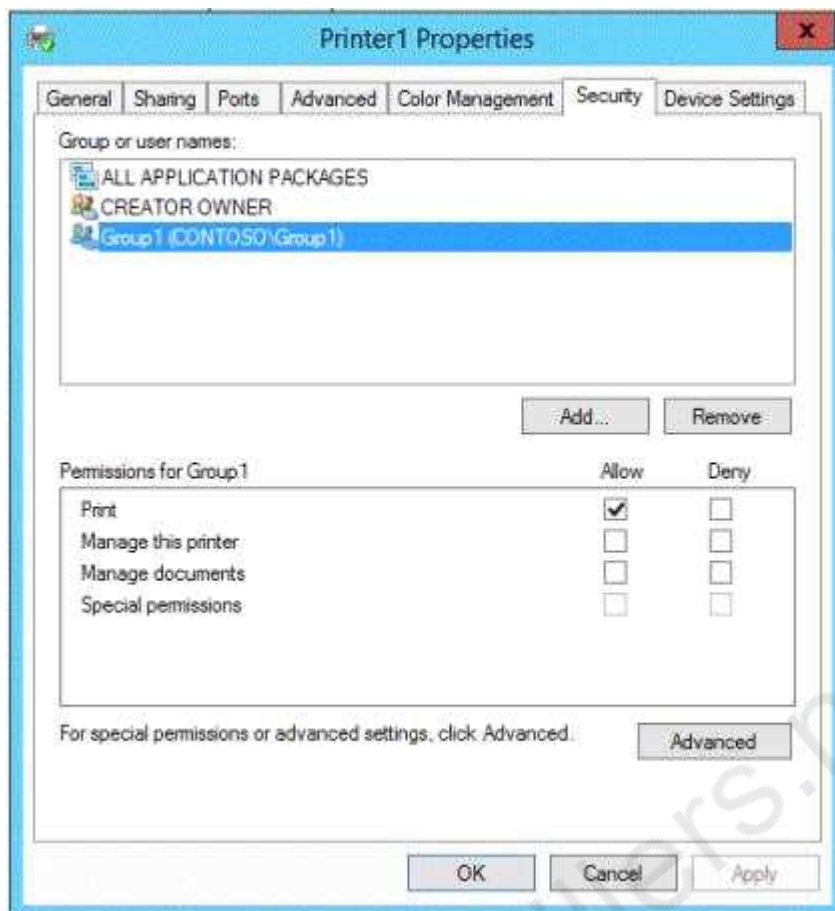
On Server1, you create and share a printer named Printer1.

The Advanced settings of Printer1 are shown in the Advanced exhibit. (Click the Exhibit button.)

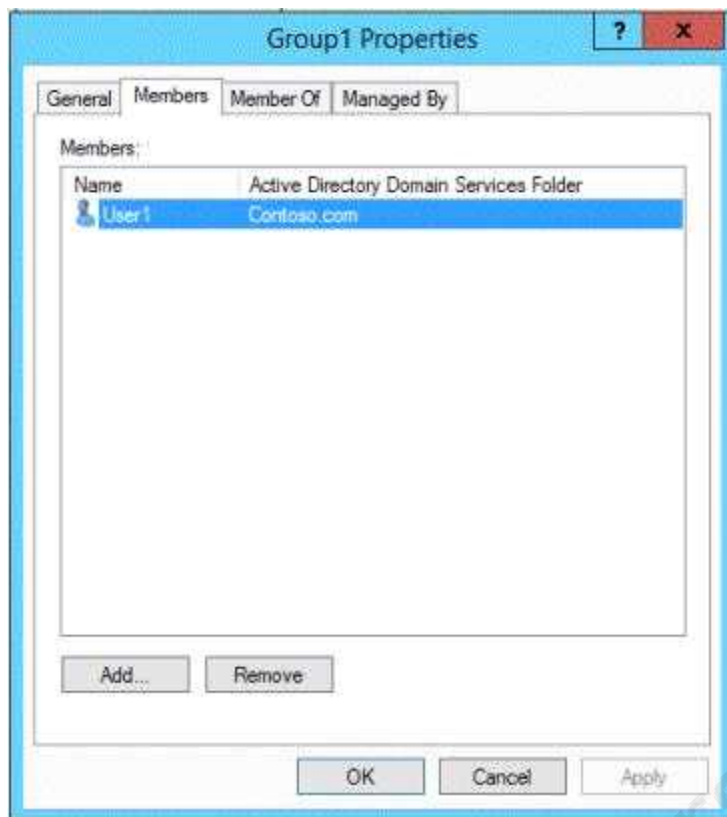


The Security settings of Printer1 are shown in the Security exhibit. (Click the Exhibit button.)





The Members settings of a group named Group1 are shown in the Group1 exhibit. (Click the Exhibit button.)



Select Yes if the statement can be shown to be true based on the available information; otherwise select No. Each correct selection is worth one point.

	Yes	No
User1 can print on Printer1 on Monday at 18:00.	<input type="radio"/>	<input type="radio"/>
User2 can print on Printer1 on Friday at 14:00.	<input type="radio"/>	<input type="radio"/>
User1 can print on Printer1 on Sunday at 11:00.	<input type="radio"/>	<input type="radio"/>

**Answer:**

	Yes	No
User1 can print on Printer1 on Monday at 18:00.	<input type="radio"/>	<input checked="" type="radio"/>
User2 can print on Printer1 on Friday at 14:00.	<input type="radio"/>	<input checked="" type="radio"/>
User1 can print on Printer1 on Sunday at 11:00.	<input checked="" type="radio"/>	<input type="radio"/>

### Question: 15

Your network contains a server named Server1 that runs Windows Server 2012 R2. Server1 has the Hyper-V server role installed.

Server1 hosts four virtual machines named VM1, VM2, VM3, and VM4.

Server1 is configured as shown in the following table.

Hardware component	Configuration
Processor	Eight quad-core CPUs that have non-uniform memory access (NUMA)
Memory	32 GB of RAM
Disk	Two local 4-TB disks
Network	Eight network adapters VMQ-supported PCI-SIG-supported

You install Windows Server 2012 R2 on VM2 by using Windows Deployment Services (WDS).

You need to ensure that the next time VM2 restarts, you can connect to the WDS server by using PXE.

Which virtual machine setting should you configure for VM2?

- A. NUMA topology
- B. Resource control
- C. resource metering
- D. virtual Machine Chimney
- E. The VLAN ID
- F. Processor Compatibility
- G. The startup order
- H. Automatic Start Action
- I. Integration Services
- J. Port mirroring
- K. Single-root I/O virtualization

**Answer: G**

Explanation:

Configure the BIOS of the computer to enable PXE boot, and set the boot order so that it is booting from the network is first.

References: [http://technet.microsoft.com/en-us/library/cc766320\(v=ws.10\).aspx](http://technet.microsoft.com/en-us/library/cc766320(v=ws.10).aspx)

Exam Ref 70-410, Installing and Configuring Windows Server 2012 R2, Chapter 3: Configure Hyper-V, Objective 3.1: Create and Configure virtual machine settings, p.144

Training Guide: Installing and Configuring Windows Server 2012 R2: Chapter 7: Hyper-V Virtualization, Lesson 2: Deploying and configuring virtual machines, p.335

---

### Question: 16

---

Your network contains a server named Server1 that runs Windows Server 2012 R2. Server1 has the Hyper-V server role installed.

Server1 hosts four virtual machines named VM1, VM2, VM3, and VM4.

Server1 is configured as shown in the following table.

Hardware component	Configuration
Processor	Eight quad-core CPUs that have non-uniform memory access (NUMA)
Memory	32 GB of RAM
Disk	Two local 4-TB disks
Network	Eight network adapters VMQ-supported PCI-SIG-supported

You plan to schedule a complete backup of Server1 by using Windows Server Backup.

You need to ensure that the state of VM1 is saved before the backup starts.

What should you configure?

- A. NUMA topology
- B. Resource control
- C. resource metering
- D. virtual Machine Chimney
- E. The VLAN ID
- F. Processor Compatibility
- G. The startup order
- H. Automatic Start Action
- I. Integration Services
- J. Port mirroring
- K. Single-root I/O virtualization

---

**Answer: I**

---

Explanation:

The Integration Services settings on virtual machines include services such as operating system shutdown, time synchronization, data exchange, Heartbeat, and Backup (volume snapshot services).

This snapshot will ensure that the state of VM1 is saved prior to backup.

References: [http://msdn.microsoft.com/en-us/library/dd405549\(v=vs.85\).aspx](http://msdn.microsoft.com/en-us/library/dd405549(v=vs.85).aspx)

Exam Ref 70-410, Installing and Configuring Windows Server 2012 R2, Chapter 3: Configure Hyper-V, Objective 3.1: Create and Configure virtual machine settings, p.144

---

**Question: 17**

---

Your network contains a server named Server1 that runs Windows Server 2012 R2. Server1 has the Hyper-V server role installed.

Server1 hosts four virtual machines named VM1, VM2, VM3, and VM4.

Server1 is configured as shown in the following table.

Hardware component	Configuration
Processor	Eight quad-core CPUs that have non-uniform memory access (NUMA)
Memory	32 GB of RAM
Disk	Two local 4-TB disks
Network	Eight network adapters VMQ-supported PCI-SIG-supported

VM2 sends and receives large amounts of data over the network.

You need to ensure that the network traffic of VM2 bypasses the virtual switches of the parent partition.

What should you configure?

- A. NUMA topology
- B. Resource control
- C. resource metering
- D. virtual Machine Chimney
- E. The VLAN ID
- F. Processor Compatibility
- G. The startup order
- H. Automatic Start Action
- I. Integration Services
- J. Port mirroring
- K. Single-root I/O virtualization

---

**Answer: K**

---

Explanation:

Single-root I/O virtualization -capable network adapters can be assigned directly to a virtual machine to maximize network throughput while minimizing network latency and the CPU overhead required for processing network traffic.

References: [http://technet.microsoft.com/en-us/library/cc766320\(v=ws.10\).aspx](http://technet.microsoft.com/en-us/library/cc766320(v=ws.10).aspx)

<http://technet.microsoft.com/en-us/library/hh831410.aspx>

Exam Ref 70-410, Installing and Configuring Windows Server 2012 R2, Chapter 3: Configure Hyper-V, Objective 3.1: Create and Configure virtual machine settings, p.144

Training Guide: Installing and Configuring Windows Server 2012 R2: Chapter 7: Hyper-V Virtualization, Lesson 2: Deploying and configuring virtual machines, p.335

---

**Question: 18**

---

Your network contains a server named Server1 that runs Windows Server 2012 R2. Server1 has the Hyper-V server role installed.

Server1 hosts four virtual machines named VM1, VM2, VM3, and VM4.

Server1 is configured as shown in the following table.

Hardware component	Configuration
Processor	Eight quad-core CPUs that have non-uniform memory access (NUMA)
Memory	32 GB of RAM
Disk	Two local 4-TB disks
Network	Eight network adapters VMQ-supported PCI-SIG-supported

You need to ensure that VM1 can use more CPU time than the other virtual machines when the CPUs on Server1 are under a heavy load.

What should you configure?

- A. NUMA topology
- B. Resource control
- C. resource metering
- D. virtual Machine Chimney
- E. The VLAN ID
- F. Processor Compatibility
- G. The startup order
- H. Automatic Start Action
- I. Integration Services
- J. Port mirroring
- K. Single-root I/O virtualization

---

**Answer: B**

---

Explanation:

B. Resource controls provide you with several ways to control the way that Hyper-V allocates resources to virtual machine. Resource control is used in the event where you need to adjust the computing resources of a virtual machine, you can reconfigure the resources to meet the changing needs. You can also specify resource controls to automate how resources are allocated to virtual machines.

References:

[http://technet.microsoft.com/en-us/library/cc766320\(v=ws.10\).aspx](http://technet.microsoft.com/en-us/library/cc766320(v=ws.10).aspx)

<http://technet.microsoft.com/en-us/library/hh831410.aspx>

<http://technet.microsoft.com/en-us/library/cc742470.aspx>

Exam Ref 70-410, Installing and Configuring Windows Server 2012 R2, Chapter 3: Configure Hyper-V, Objective 3.1: Create and Configure virtual machine settings, p.144

Training Guide: Installing and Configuring Windows Server 2012 R2: Chapter 7: Hyper-V Virtualization, Lesson 2: Deploying and configuring virtual machines, p.335

---

**Question: 19**

---

**HOTSPOT**

Your network contains an Active Directory domain named contoso.com.

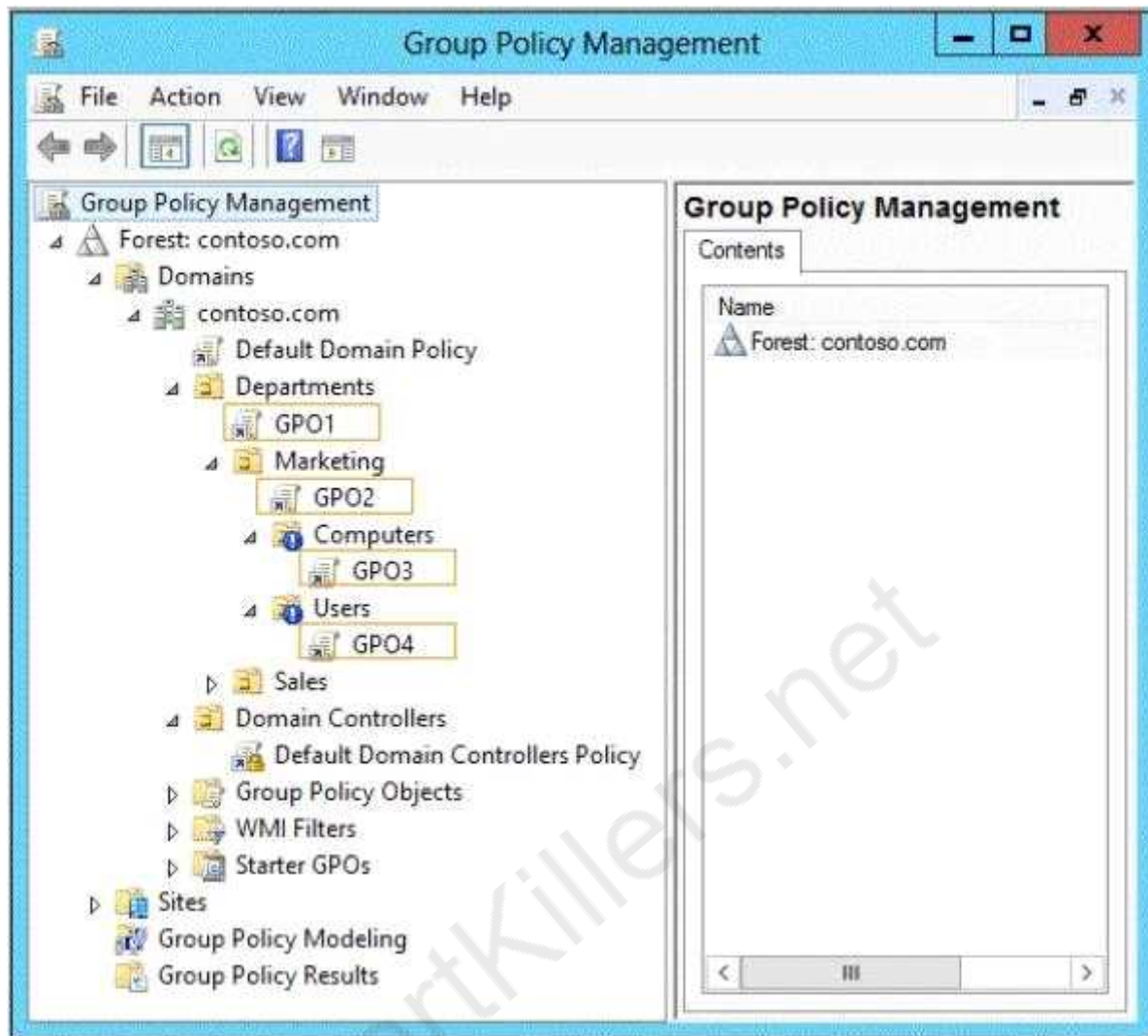
Computer accounts for the marketing department are in an organizational unit (OU) named Departments\Marketing\Computers. User accounts for the marketing department are in an OU named Departments\Marketing\Users.

Marketing users can only log on to the client computers in the Departments\Marketing\Computers OU.

You need to apply an application control policy to all of the marketing users.

Which Group Policy Object (GPO) should you configure?

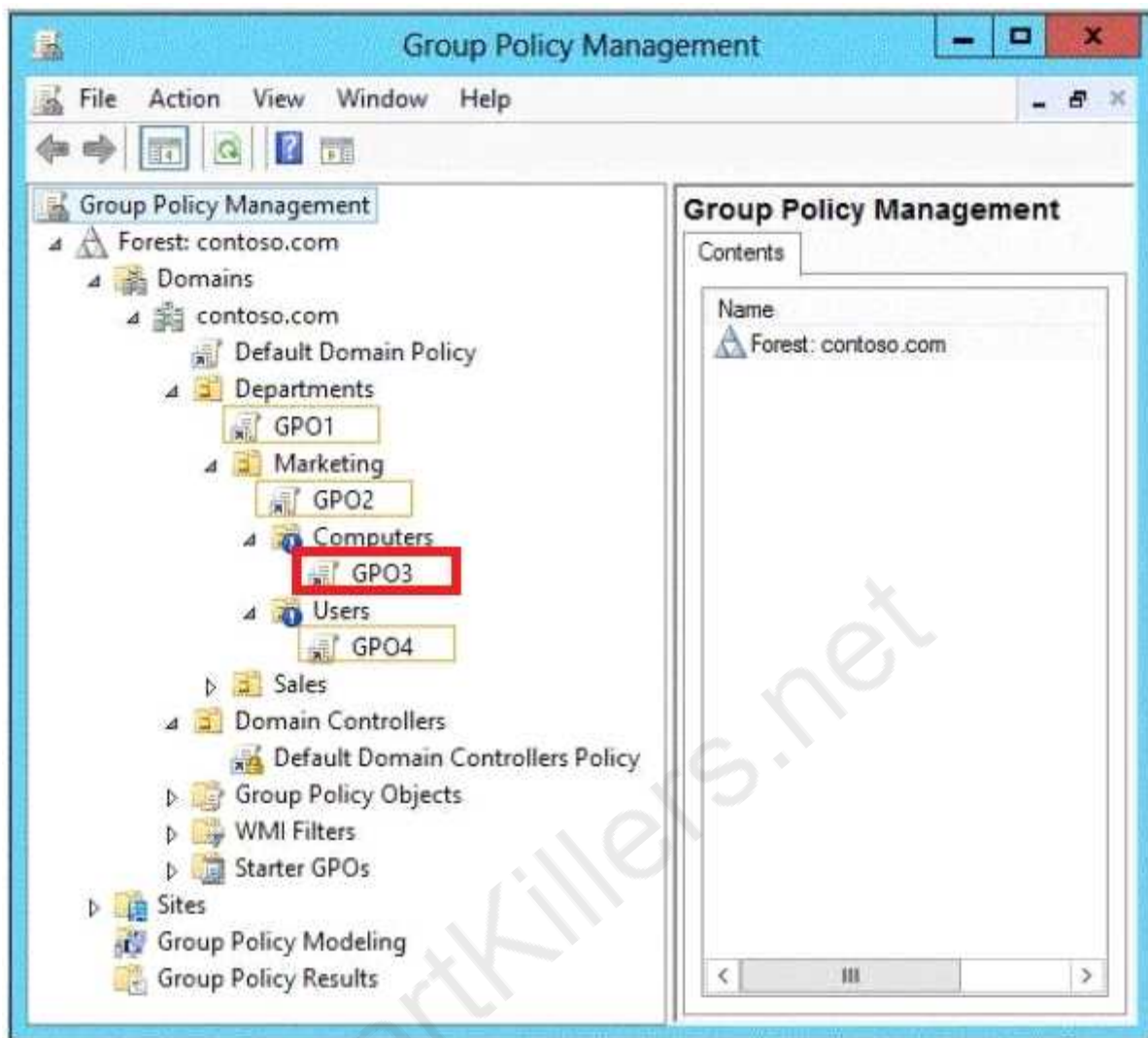
To answer, select the appropriate GPO in the answer area.



---

**Answer:**





Application control policies specify which programs are allowed to run on the local computer and which are not.

References:

[http://technet.microsoft.com/en-us/library/hh125923\(v=ws.10\).aspx](http://technet.microsoft.com/en-us/library/hh125923(v=ws.10).aspx)

[http://technet.microsoft.com/en-us/library/cc781458\(v=WS.10\).aspx](http://technet.microsoft.com/en-us/library/cc781458(v=WS.10).aspx)

<http://technet.microsoft.com/en-us/library/hh967461.aspx>

<http://technet.microsoft.com/en-us/library/ee461050.aspx>

<http://technet.microsoft.com/en-us/library/ee461044.aspx>

---

### Question: 20

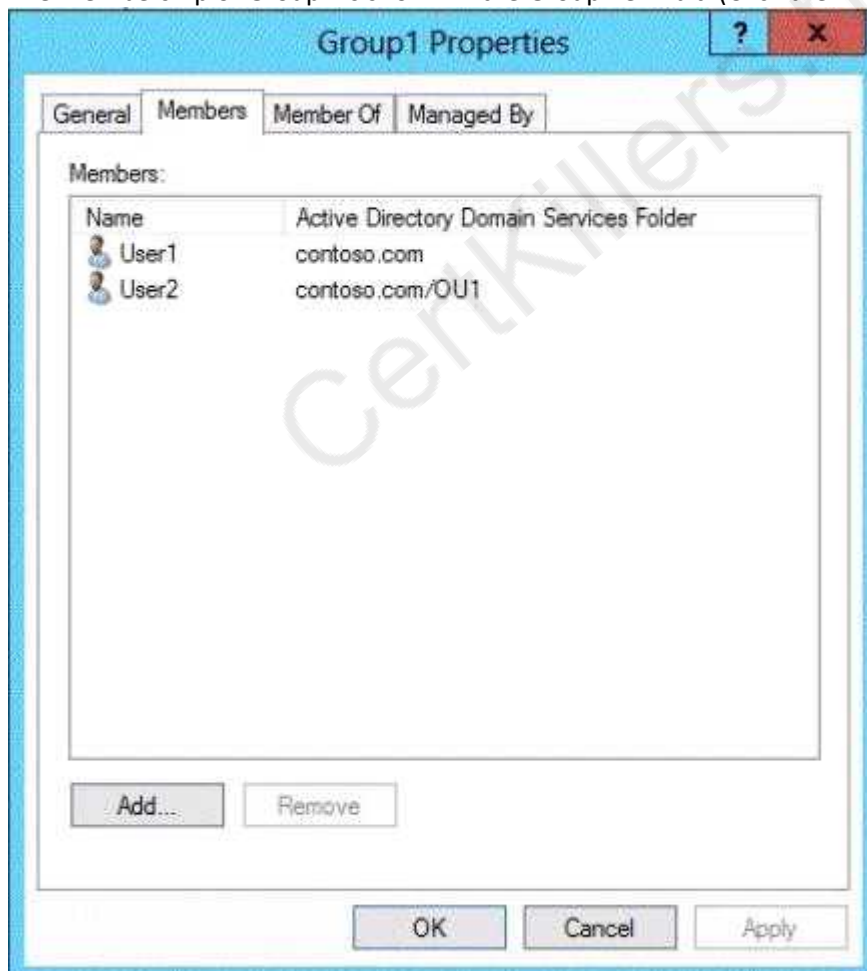
HOTSPOT

Your network contains an Active Directory domain named contoso.com.

The domain contains an organizational unit (OU) named OU1 as shown in the OU1 exhibit. (Click the Exhibit button.)

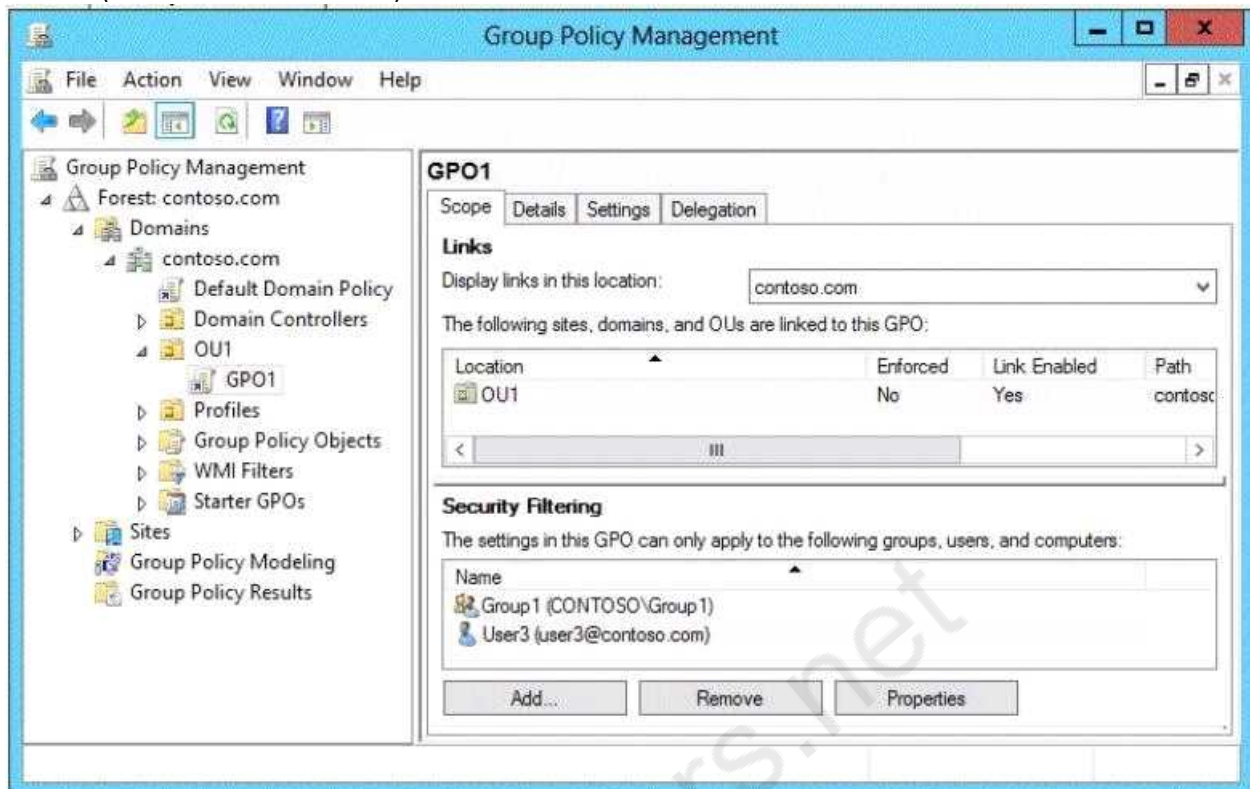


The membership of Group1 is shown in the Group1 exhibit. (Click the Exhibit button.)



You configure GPO1 to prohibit access to Control Panel. GPO1 is linked to OU1 as shown in the GPO1

exhibit. (Click the Exhibit button.)



Select Yes if the statement can be shown to be true based on the available information; otherwise select No. Each correct selection is worth one point.

	Yes	No
User1 can access Control Panel.	<input type="radio"/>	<input type="radio"/>
User2 can access Control Panel.	<input type="radio"/>	<input type="radio"/>
User3 can access Control Panel.	<input type="radio"/>	<input type="radio"/>
User4 can access Control Panel.	<input type="radio"/>	<input type="radio"/>

**Answer:**

	Yes	No
User1 can access Control Panel.	<input checked="" type="checkbox"/>	<input type="checkbox"/>
User2 can access Control Panel.	<input type="checkbox"/>	<input checked="" type="checkbox"/>
User3 can access Control Panel.	<input checked="" type="checkbox"/>	<input type="checkbox"/>
User4 can access Control Panel.	<input checked="" type="checkbox"/>	<input type="checkbox"/>

Explanation:

Group Policy does NOT APPLY TO SECURITY GROUPS, only users and computers in an OU. Consequently, the only users in the OU are User2 and User4. Since the Security Filtering specifies that the policy will only apply to users/computers in the OU who are members of Group1 or User3, User4 will not have the policy applied. Since User2 is, in fact, a member of Group1, the policy will be applied to user 2. Thus, the only user who will not be able to access the control panel is User2.

### Question: 21

HOTSPOT

Your network contains an Active Directory domain named adatum.com. All domain controllers run Windows Server 2012 R2. All client computers run Windows 7. The computer accounts for all of the client computers are located in an organizational unit (OU) named OU1.

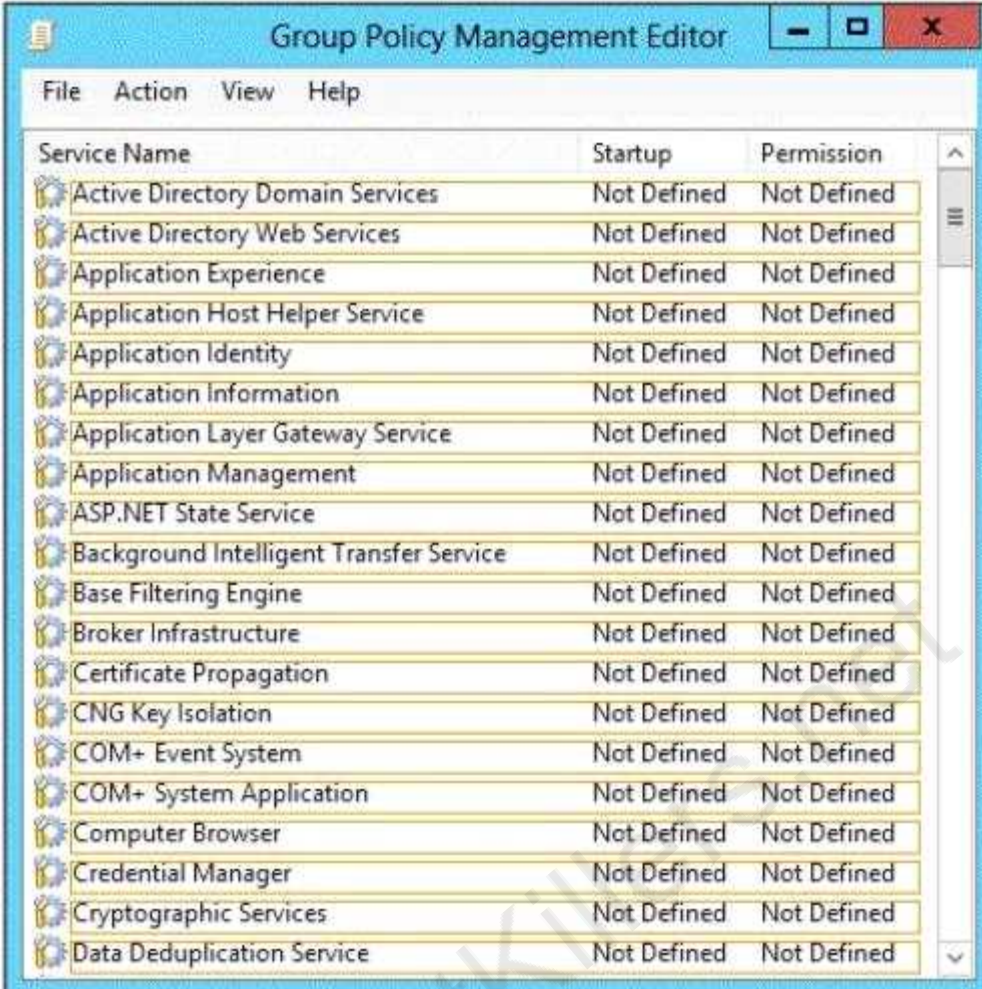
An administrator links a Group Policy object (GPO) to OU1. The GPO contains several application control policies.

You discover that the application control policies are not enforced on the client computers.

You need to modify the GPO to ensure that the application control policies are enforced on the client computers.

What should you configure in the GPO?

To answer, select the appropriate service in the answer area.



The screenshot shows the 'Group Policy Management Editor' window. It has a menu bar with 'File', 'Action', 'View', and 'Help'. Below the menu is a table with three columns: 'Service Name', 'Startup', and 'Permission'. The table lists 20 services, all of which have 'Not Defined' for both 'Startup' and 'Permission'. A vertical scrollbar is visible on the right side of the table.

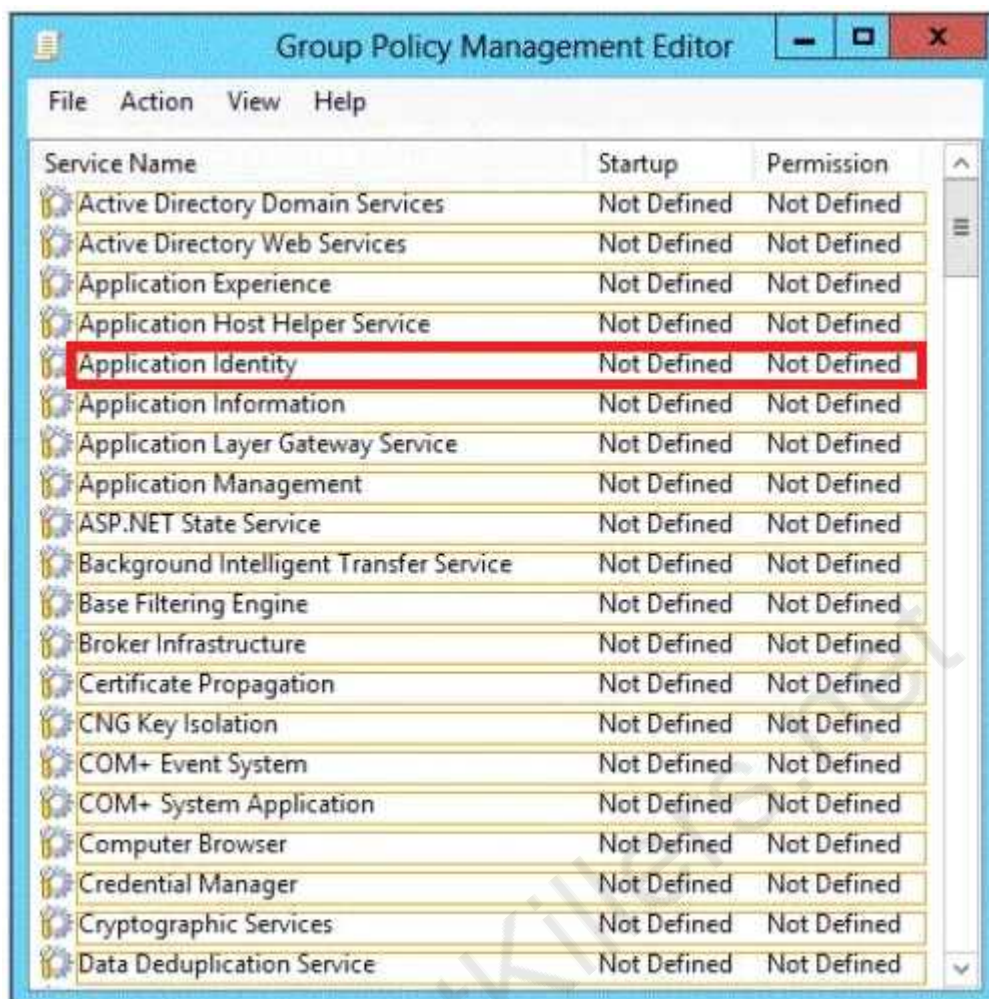
Service Name	Startup	Permission
Active Directory Domain Services	Not Defined	Not Defined
Active Directory Web Services	Not Defined	Not Defined
Application Experience	Not Defined	Not Defined
Application Host Helper Service	Not Defined	Not Defined
Application Identity	Not Defined	Not Defined
Application Information	Not Defined	Not Defined
Application Layer Gateway Service	Not Defined	Not Defined
Application Management	Not Defined	Not Defined
ASP.NET State Service	Not Defined	Not Defined
Background Intelligent Transfer Service	Not Defined	Not Defined
Base Filtering Engine	Not Defined	Not Defined
Broker Infrastructure	Not Defined	Not Defined
Certificate Propagation	Not Defined	Not Defined
CNG Key Isolation	Not Defined	Not Defined
COM+ Event System	Not Defined	Not Defined
COM+ System Application	Not Defined	Not Defined
Computer Browser	Not Defined	Not Defined
Credential Manager	Not Defined	Not Defined
Cryptographic Services	Not Defined	Not Defined
Data Deduplication Service	Not Defined	Not Defined

---

**Answer:**

---





Explanation:

Does AppLocker use any services for its rule enforcement?

Yes, AppLocker uses the Application Identity service (AppIDSvc) for rule enforcement. For AppLocker rules to be enforced, this service must be set to start automatically in the GPO.

Before you can enforce AppLocker policies, you must start the Application Identity service by using the Services snap-in console.

Membership in the local Administrators group, or equivalent, is the minimum required to complete this procedure.

To start the Application Identity service

Click Start, click Administrative Tools, and then click Services.

In the Services snap-in console, double-click Application Identity.

In the Application Identity Properties dialog box, click Automatic in the Startup type list, click Start, and then click OK.

Reference: <http://technet.microsoft.com/en-us/library/dd759130.aspx>

---

## Question: 22

Your network contains an Active Directory domain named contoso.com. You have a Group Policy object (GPO) named GP1 that is linked to the domain. GP1 contains a software restriction policy that blocks an application named App1.

You have a workgroup computer named Computer1 that runs Windows 8. A local Group Policy on

Computer1 contains an application control policy that allows App1.

You join Computer1 to the domain.

You need to prevent App1 from running on Computer1.

What should you do?

- A. From Computer1, run gpupdate/force.
- B. From Group Policy Management, add an application control policy to GP1.
- C. From Group Policy Management, enable the Enforced option on GP1.
- D. In the local Group Policy of Computer1, configure a software restriction policy.

---

**Answer: B**

---

Explanation:

AppLocker policies take precedence over policies generated by SRP on computers that are running an operating system that supports AppLocker.

AppLocker policies in the GPO are applied, and they supersede the policies generated by SRP in the GPO and local AppLocker policies or policies generated by SRP.

---

### Question: 23

---

Your network contains an Active Directory domain named contoso.com. All client computer accounts are in an organizational unit (OU) named AllComputers. Client computers run either Windows 7 or Windows 8.

You create a Group Policy object (GPO) named GP1.

You link GP1 to the AllComputers OU.

You need to ensure that GP1 applies only to computers that have more than 8 GB of memory.

What should you configure?

- A. The Security settings of GP1
- B. The Block Inheritance option for AllComputers
- C. The Security settings of AllComputers
- D. The WMI filter for GP1

---

**Answer: D**

---

Explanation:

Windows Management Instrumentation (WMI) filters allow you to dynamically determine the scope of Group Policy objects (GPOs) based on attributes of the target computer.

When a GPO that is linked to a WMI filter is applied on the target computer, the filter is evaluated on the target computer. If the WMI filter evaluates to false, the GPO is not applied (except if the client computer is running Windows Server, in which case the filter is ignored and the GPO is always applied). If the WMI filter evaluates to true, the GPO is applied. WMI filters, like GPOs, are stored on a per-domain basis. A WMI filter and the GPO it is linked to must be in the same domain.

References:

Training Guide: Installing and Configuring Windows Server 2012 R2: Chapter 10: Implementing Group Policy, p.470, 482

<http://technet.microsoft.com/en-us/library/jj134176>

WMI filtering using GPMC

---

**Question: 24**

---

Your network contains an Active Directory domain named contoso.com. The domain contains an Application server named Server1. Server1 runs Windows Server 2012 R2.

Server1 is configured as an FTP server.

Client computers use an FTP Application named App1.exe. App1.exe uses TCP port 21 as the control port and dynamically requests a data port.

On Server1, you create a firewall rule to allow connections on TCP port 21.

You need to configure Server1 to support the client connections from App1.exe.

What should you do?

- A. Run `netsh advfirewall set global statefulftp enable`.
- B. Create an inbound firewall rule to allow App1.exe.
- C. Create a tunnel connection security rule.
- D. Run `Set-NetFirewallRule -DisplayName DynamicFTP -Profile Domain`

---

**Answer: A**

---

Explanation:

The netsh firewall context is supplied only for backward compatibility. We recommend that you do not use this context on a computer that is running Windows Vista or a later version of Windows.

In the netsh advfirewall firewall context, the add command only has one variation, the add rule command. Netsh advfirewall set global statefulftp:

Configures how Windows Firewall with Advanced Security handles FTP traffic that uses an initial connection on one port to request a data connection on a different port.

When statefulftp is enabled, the firewall examines the PORT and PASV requests for these other port numbers and then allows the corresponding data connection to the port number that was requested.

Syntax

`set global statefulftp { enable | disable | notconfigured }`

Parameters

statefulftp can be set to one of the following values:

enable

The firewall tracks the port numbers specified in PORT command requests and in the responses to PASV requests, and then allows the incoming FTP data traffic entering on the requested port number.

disable

This is the default value. The firewall does not track outgoing PORT commands or PASV responses, and so incoming data connections on the PORT or PASV requested port is blocked as an unsolicited incoming connection.

notconfigured

Valid only when netsh is configuring a GPO by using the set store command.

---

**Question: 25**

---

Your network contains an Active Directory domain named contoso.com. You need to create the



Central Store for Group Policy Administrative Templates in adatum.com  
What should you copy?

- A. C:\Windows\System32\GroupPolicy to \\Adatum.com\Policies
- B. C:\Windows\PolicyDefinitions to \\Adatum.com\SYSVOL\Adatum.com\Policies
- C. C:\Windows\System32\GroupPolicy to \\Adatum.com\Netlogon
- D. C:\Windows\PolicyDefinitions to \\Adatum.com\Netlogon

---

**Answer: B**

---

---

**Question: 26**

---

Your network contains an Active Directory domain named contoso.com. The domain computers that use IPV4 and IPv6.

You have a DHCP server named Server1 that runs Windows Server 2012.

You install Windows Server 2012 R2 on a server named Server2. You install the DHCP Server server role on Server2.

You need to migrate the DHCP services from Server1 to Server2. The solution must meet the following requirements:

Ensure that existing leases are migrated.

Prevent lease conflicts.

Which cmdlet should you use to retrieve the required information from server1?

- A. Run the Add-DhcpServer4Leave cmdlet and specify the –hostname parameter.
- B. Run the Get-DhcpServer4Lease cmdlet and specify the –AllLease parameter.
- C. Run the Send-SmigServerData cmdlet and specify the –computername cmdlet.
- D. Run the Export-DhcpServer cmdlet and specify the Leases parameter.

---

**Answer: D**

---

---

**Question: 27**

---

You have a server named Server1 that runs Windows Server 2012 R2. Server1 has the Hyper-V server role installed. On Server1, you create a virtual machine named VM1. VM1 has a standard network adapter.

You need to assign a specific amount of available network bandwidth to VM1.

What should you do first?

- A. Remove the network adapter, and then add a new network adapter.
- B. Add a second network adapter, and then run the Set-VMNetworkAdapter cmdlet.
- C. Remove the network adapter, and then run the Set-VMNetworkAdapter cmdlet.
- D. Add a second network adapter, and then configure network adapter teaming.

---

**Answer: A**

---

CertKillers.net

## Thank You for trying 70-410 PDF Demo

To Buy Latest 70-410 Full Version Download visit link below

<https://www.certkillers.net/Exam/70-410>

## Start Your 70-410 Preparation

[Limited Time Offer] Use Coupon “CKNET” for Further discount on your purchase. Test your 70-410 preparation with actual exam questions.

<https://www.certkillers.net>