



# Microsoft

## 70-342 Exam

**Microsoft Advanced Solutions of Microsoft Exchange Server  
2013 Exam ,Microsoft240**

**Thank you for Downloading 70-342 exam PDF Demo**

**You can Buy Latest 70-342 Full Version Download**

<https://www.certkillers.net/Exam/70-342>

<https://www.certkillers.net>

# Version: 25.0

---

## Question: 1

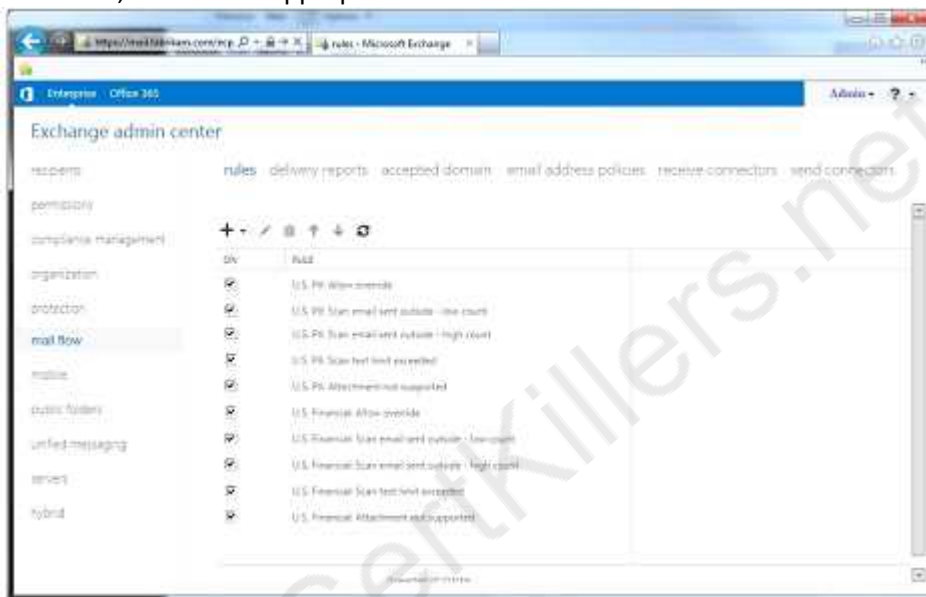
---

### HOT SPOT

You need to configure transport rules to meet the technical requirements for the PII data and the financial data.

How should you configure the rules?

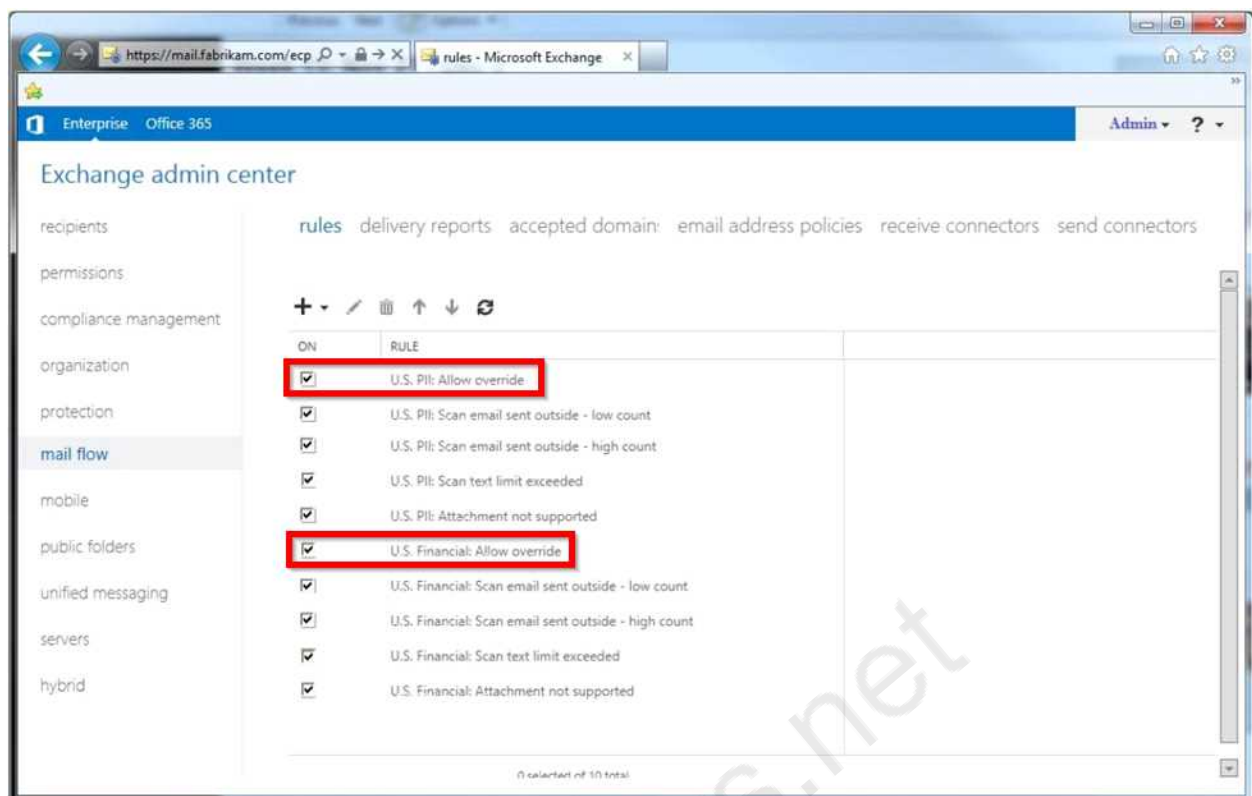
To answer, disable the appropriate rule or rules in the answer area.



---

**Answer:**

---



Explanation:

The question asks which rules should be DISABLED. We need to disable the two Allow Override rules and leave the rest in place.

## Question: 2

The Internet link in the Tampa office will be unavailable during the weekend.

You need to ensure that all outbound email messages are sent from the Charlotte office during the planned outage.

What should you do?

- A. Modify the cost of the Tampa SMTP Send connector.
- B. Create a new mail exchanger (MX) record named SMTP2.fabrikam.com in the internal DNS zone.
- C. Modify the smart host of the Tampa SMTP Send connector.
- D. Modify the preference value of the fabrikam.com mail exchanger (MX) records.

**Answer: C**

Explanation:

Sometimes you need to route all your outbound emails through a SMTP smart host and not route them directly to the internet.

From scenario:

- \* A Send connector named Tampa SMTP that uses SMTP1 as a smart host. The cost of the Tampa SMTP connector is 10.
- \* Mailbox servers in the Tampa office that provide outbound SMTP services to the Internet.

\* An SMTP relay device named SMTP1 in the Tampa office.

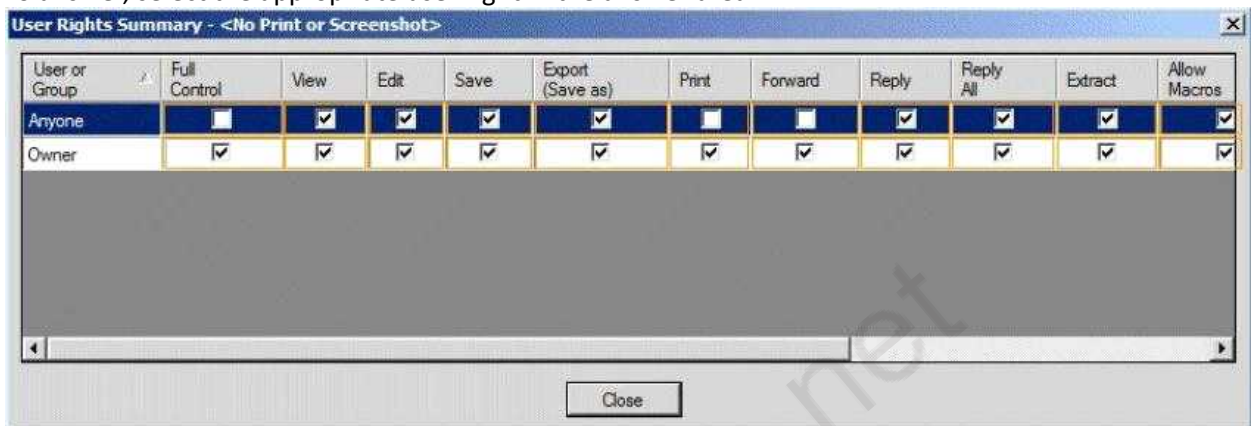
**Question: 3**

HOT SPOT

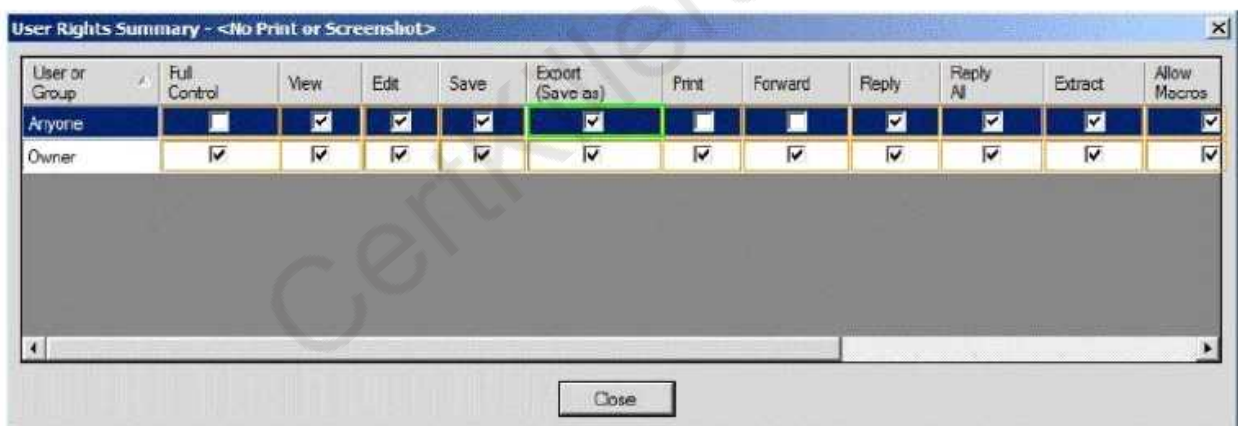
You need to resolve the IRM template issue.

Which user right should you modify?

To answer, select the appropriate user right in the answer area.



**Answer:**



**Question: 4**

You need to recommend a solution for the HR voice mail. The solution must meet the security requirements.

What should you recommend?

- A. Create a UM mailbox policy and associate the policy to UM1. Configure the voice mail protection settings of the UM mailbox policy. Create an auto attendant and link the auto attendant to UM1.
- B. Create a UM mailbox policy and associate the policy to a new dial plan. Configure the voice mail protection settings of the UM mailbox policy. Create an auto attendant and link the auto attendant to the new dial plan.
- C. Create a UM mailbox policy and associate the policy to a new dial plan. Configure the voice mail protection settings of the UM mailbox policy. Assign the UM mailbox policy to the mailbox of the HR

department.

D. Create a UM mailbox policy and associate the policy to UM1. Configure the voice mail protection settings of the UM mailbox policy. Assign the UM1 mailbox policy to the mailbox of the HR department.

---

**Answer: D**

---

Explanation:

\* Scenario:

/ Use Information Rights Management (IRM) to protect all of the voice mails left for the telephone number of the human resource (HR) department.

/ There is a UM dial plan named UM1.

\* The Protected Voice Mail feature is available with Exchange 2010 and later versions of Unified Messaging (UM). It can be configured on a UM mailbox policy.

\* By default, a single UM mailbox policy is created every time you create a UM dial plan. The new UM mailbox policy is automatically associated with the UM dial plan, and part of the dial plan name is included in the display name of the UM mailbox policy. You can edit this default UM mailbox policy. You can create additional UM mailbox policies to apply a common set of settings for groups of users.

---

**Question: 5**

---

You need to recommend an Outlook protection rule solution to meet the technical requirements. What should you recommend?

A. Create an Outlook protection rule and filter the rule based on the FromDepartment property. Apply the Do Not Forward protection template to the rule and enable the UserCanOverride setting.

B. Create an Outlook protection rule and filter the rule based on the FromDepartment property. Apply the Do Not Forward protection template to the rule and disable the UserCanOverride setting.

C. Create an Outlook protection rule and filter the rule based on the SentTo property. Apply the Do Not Forward protection template to the rule and disable the UserCanOverride setting.

D. Create an Outlook protection rule and filter the rule based on the SentTo property. Apply the Do Not Forward protection template to the rule and enable the UserCanOverride setting.

---

**Answer: B**

---

Explanation:

\* Scenario:

Prevent the forwarding of email messages sent by users who have a value of Legal in their Department field.

\* Use FromDepartment property and do not allow the user to override.

---

**Question: 6**

---

HOT SPOT

You plan to create two retention tags named Tag1 and Tag2. Tag1 will be used to move email

messages to the Archive mailbox. Tag2 will be used to delete the email messages.

You need to identify which settings must be configured in the retention tags to meet the technical requirements.

How should you configure each retention tag?

To answer, configure the appropriate options for each retention tag setting in the answer area.

| Setting            | Tag1                 | Tag2                 |
|--------------------|----------------------|----------------------|
| Retention tag type | <input type="text"/> | <input type="text"/> |
| Retention action   | <input type="text"/> | <input type="text"/> |
| Retention period   | <input type="text"/> | <input type="text"/> |

| Setting            | Tag1  | Tag2  |
|--------------------|---|---|
| Retention tag type | <input type="text"/> <ul style="list-style-type: none"> <li>All</li> <li>Inbox</li> <li>Personal</li> </ul>   | <input type="text"/> <ul style="list-style-type: none"> <li>All</li> <li>Inbox</li> <li>Personal</li> </ul>   |
| Retention action   | <input type="text"/> <ul style="list-style-type: none"> <li>Move to archive mailbox</li> <li>Permanently delete</li> <li>Delete and allow recovery</li> </ul> | <input type="text"/> <ul style="list-style-type: none"> <li>Move to archive mailbox</li> <li>Permanently delete</li> <li>Move to archive mailbox</li> </ul> |
| Retention period   | <input type="text"/> <ul style="list-style-type: none"> <li>After 30 days</li> <li>After 335 days</li> <li>After 365 days</li> </ul>                          | <input type="text"/> <ul style="list-style-type: none"> <li>After 30 days</li> <li>After 335 days</li> <li>After 365 days</li> </ul>                        |

---

**Answer:**

---

| Setting            | Tag1   | Tag2  |
|--------------------|--|---|
| Retention tag type | <div style="border: 1px solid black; padding: 2px;"> <div style="border: 1px solid black; height: 20px; margin-bottom: 2px;"></div> <div style="border: 1px solid black; padding: 2px;"> <span>All</span><br/>                     Inbox<br/>                     Personal                 </div> </div>   | <div style="border: 1px solid black; padding: 2px;"> <div style="border: 1px solid black; height: 20px; margin-bottom: 2px;"></div> <div style="border: 1px solid black; padding: 2px;"> <span>All</span><br/>                     Inbox<br/>                     Personal                 </div> </div>  |
| Retention action   | <div style="border: 1px solid black; padding: 2px;"> <div style="border: 1px solid black; height: 20px; margin-bottom: 2px;"></div> <div style="border: 1px solid black; padding: 2px;"> <span>Move to archive mailbox</span><br/>                     Permanently delete<br/>                     Delete and allow recovery                 </div> </div> | <div style="border: 1px solid black; padding: 2px;"> <div style="border: 1px solid black; height: 20px; margin-bottom: 2px;"></div> <div style="border: 1px solid black; padding: 2px;"> <span>Move to archive mailbox</span><br/> <span>Permanently delete</span><br/>                     Move to archive mailbox                 </div> </div> |
| Retention period   | <div style="border: 1px solid black; padding: 2px;"> <div style="border: 1px solid black; height: 20px; margin-bottom: 2px;"></div> <div style="border: 1px solid black; padding: 2px;"> <span>After 30 days</span><br/>                     After 335 days<br/>                     After 365 days                 </div> </div>                          | <div style="border: 1px solid black; padding: 2px;"> <div style="border: 1px solid black; height: 20px; margin-bottom: 2px;"></div> <div style="border: 1px solid black; padding: 2px;">                     After 30 days<br/>                     After 335 days<br/> <span>After 365 days</span> </div> </div>                                 |

Explanation:

\* Scenario:

Implement an archiving policy that moves all of the email messages from the mailbox folders to an Archive mailbox after 30 days and permanently deletes all of the email messages after 365 days.

\* Both Tag Types should affect all email messages. For the first policy move the archive after 30 days. The second policy should permanently delete the messages after 365 days.

**Question: 7**

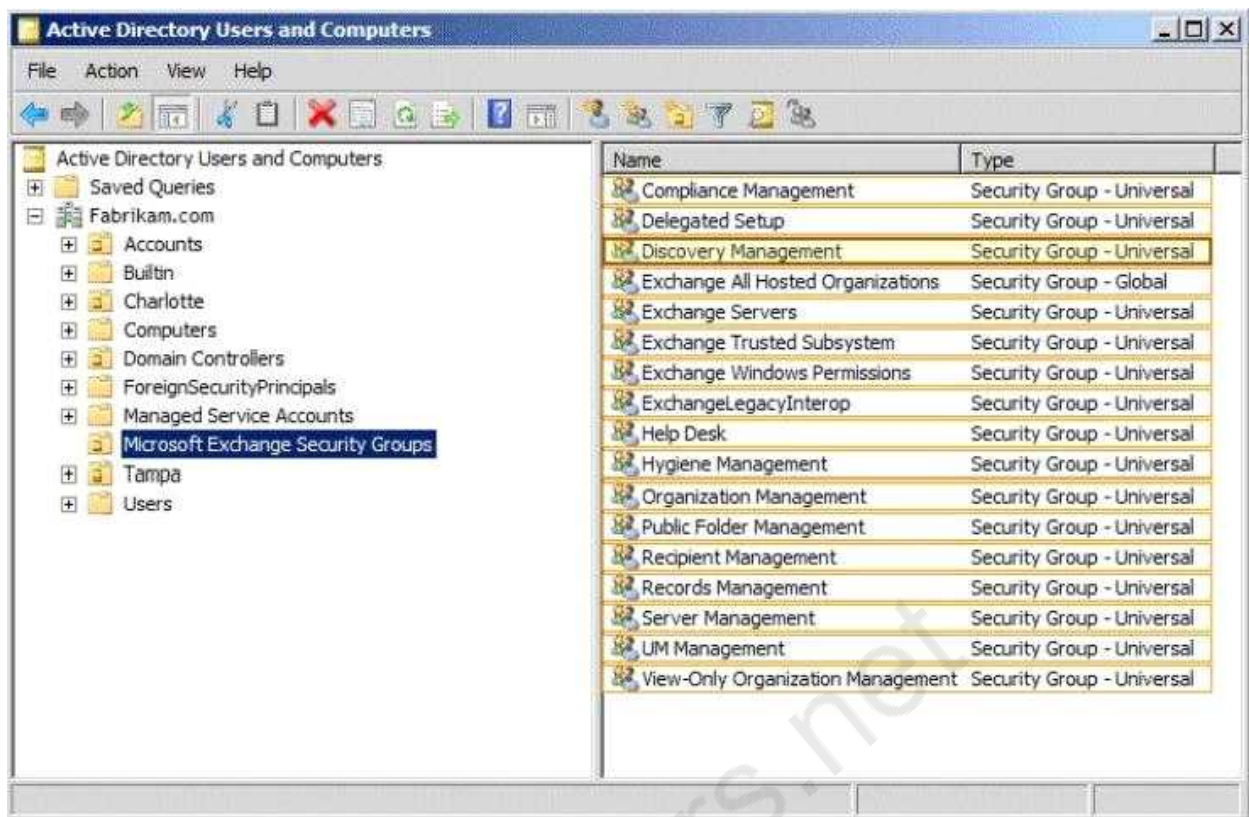
HOT SPOT

You need to ensure that the HR1 group can perform the tasks required to meet the technical requirements.

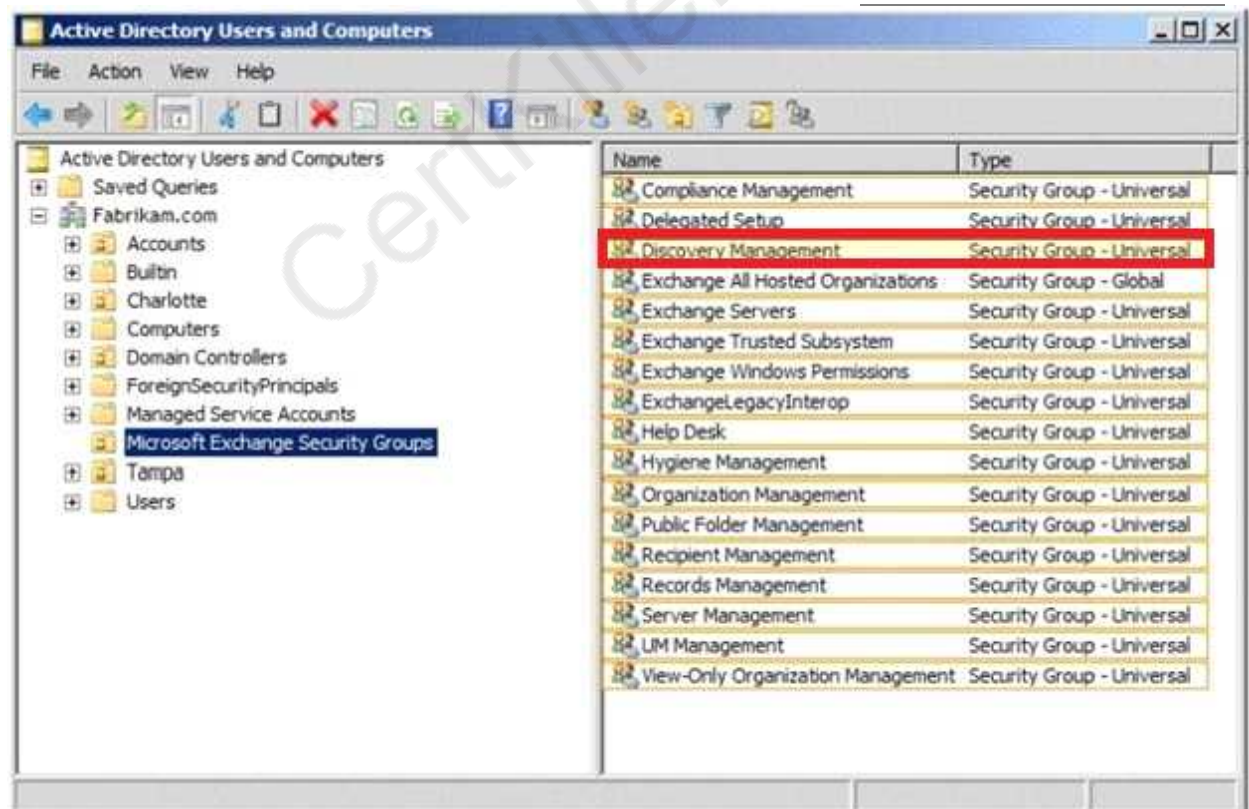
To which group should you add HR1?

To answer, select the appropriate group in the answer area.





**Answer:**



Explanation:



\* Scenario:

Ensure that the members of a group named HR1 can search all of the mailboxes for sensitive email content.

\* Discovery management

If you want users to be able to use Microsoft Exchange Server 2013 In-Place eDiscovery, you must first authorize them by adding them to the Discovery Management role group. Members of the Discovery Management role group have Full Access mailbox permissions for the Discovery mailbox that's created by Exchange Setup.

---

### Question: 8

You are evaluating the implementation of the planned static IP addresses for DAG1.

You need to identify the appropriate IP addresses for DAG1.

Which two IP addresses should you identify? (Each correct answer presents part of the solution. Choose two.)

- A. 169.254.0.10
- B. 192.168.1.10
- C. 192.168.2.10
- D. 192.168.10.10
- E. 192.168.20.10
- F. 224.0.0.10

---

**Answer: B, D**

---

Explanation:

\* Scenario:

/ Assign a static IP address to DAG1.

/ A database availability group (DAG) named DAG1 that contains EX2, EX3, EX5, and EX6. DAG1 is configured to use DHCP to obtain an IP address.

/ Subnet 192.168.1.0/24 and subnet 192.168.10.0/24 are assigned as the MAPI network.

\* A DAG network is a collection of one or more subnets used for either replication traffic or MAPI traffic. Each DAG contains a maximum of one MAPI network and zero or more replication networks.

---

### Question: 9

DRAG DROP

The security department implements a new firewall between the IP-PBX system and the servers in the Tampa office.

You discover that SIP sessions cannot be established between the IP-PBX and EX1.

You need to identify which ports must be opened between the IP-PBX and the Exchange Server 2013 servers.

Which ports should you identify?

To answer, drag the appropriate port or ports to the correct group of servers in the answer are

a. Each port or ports may be used once, more than once, or not at all. Additionally, you may need to drag the split bar between panes or scroll to view content.

| Ports             | Answer Area           |
|-------------------|-----------------------|
| TCP 5060          | Client Access servers |
| UDP 5060          | Port or ports         |
| TCP 5065          | Mailbox servers       |
| TCP 5067          | Port or ports         |
| TCP 1024 to 65535 | Port or ports         |
| UDP 1024 to 65535 | Port or ports         |

**Answer:**

| Ports             | Answer Area           |
|-------------------|-----------------------|
| TCP 5060          | Client Access servers |
| UDP 5060          | TCP 5060              |
| TCP 5065          | Mailbox servers       |
| TCP 5067          | TCP 5065              |
| TCP 1024 to 65535 | TCP 5067              |
| UDP 1024 to 65535 | UDP 1024 to 65535     |

**Explanation:**

You can configure the TCP port that's used to listen for Session Initiation Protocol (SIP) requests on a Unified Messaging (UM) IP gateway. By default, when you create a UM IP gateway, the TCP SIP listening port number is set to 5060.

The Microsoft Exchange Unified Messaging service and the UM worker process use multiple Transmission Control Protocol (TCP) and User Datagram Protocol (UDP) service ports to communicate with IP gateways.

The Microsoft Exchange Unified Messaging service and the UM worker process use Session Initiation Protocol (SIP) over TCP.

By default, the Microsoft Exchange Unified Messaging service listens on both TCP port 5060 in Unsecured mode and TCP port 5061 when mutual Transport Layer Security (mutual TLS) is used.

Each UM worker process that's created listens on port 5065 and 5067 (unsecured) and 5066 and 5068

(secured).

But when an IP gateway or IP PBX sends Realtime Transport Protocol (RTP) traffic to the Speech Engine service worker process, the IP gateway or IP PBX will use a valid UDP port that ranges from 1024 through 65535.

Reference:

[http://technet.microsoft.com/en-us/library/jj150516\(v=exchg.150\).aspx#ports](http://technet.microsoft.com/en-us/library/jj150516(v=exchg.150).aspx#ports)

| Protocol | Port   | Explanation  |
|----------|--|--|
| SIP      | TCP 5060 (unsecured)<br>TCP 5061 (secured)                 | Microsoft Exchange Unified Messaging Call Router service listening for SIP connections |
| SIP      | TCP 5062 (unsecured)<br>TCP 5063 (secured)                 | Microsoft Exchange Unified Messaging service listening for redirected SIP connections  |
| SIP      | TCP 5065 or 5067 (unsecured)<br>TCP 5066 or 5068 (secured) | Microsoft Exchange Unified Messaging service connections with SIP peers                |
| RTP      | UDP 1024 to 65536  | Microsoft Exchange Unified Messaging service connections with RTP peers                |

---

### Question: 10

---

You need to recommend a solution for the memos. The solution must meet the compliance requirements.

What should you include in the recommendation?

- A. Secure/Multipurpose Internet Mail Extensions (S/MIME)
- B. Information Rights Management (IRM)
- C. Domain Security
- D. Data loss prevention (DLP) policies

---

**Answer: B**

---

Explanation:

\* Scenario: Management occasionally sends the staff internal memos that contain confidential information, such as sales figures. The memos must be protected so that unauthorized users cannot read the memos and internal users cannot forward the memos to external recipients.

\* With the IRM features in Exchange 2013, your organization and your users can control the rights recipients have for e-mail. IRM also helps allow or restrict recipient actions such as forwarding a message to other recipients, printing a message or attachment, or extracting message or attachment content by copying and pasting. IRM protection can be applied by users in Microsoft Outlook or Microsoft Office Outlook Web App, or it can be based on your organization's messaging policies and

applied using transport protection rules or Outlook protection rules.  
Reference: Information Rights Management

CertKillers.net

## Thank You for trying 70-342 PDF Demo

To Buy Latest 70-342 Full Version Download visit link below

<https://www.certkillers.net/Exam/70-342>

## Start Your 70-342 Preparation

**[Limited Time Offer]** Use Coupon “CKNET” for Further discount on your purchase. Test your 70-342 preparation with actual exam questions.

<https://www.certkillers.net>