



Cisco

642-746

*Implementing Cisco Unified Wireless Mobility Services
(IUWMS)*

- B. management interface
- C. mobility manager interface
- D. mobility group interface
- E. virtual manager interface

Answer: B

Question: 85

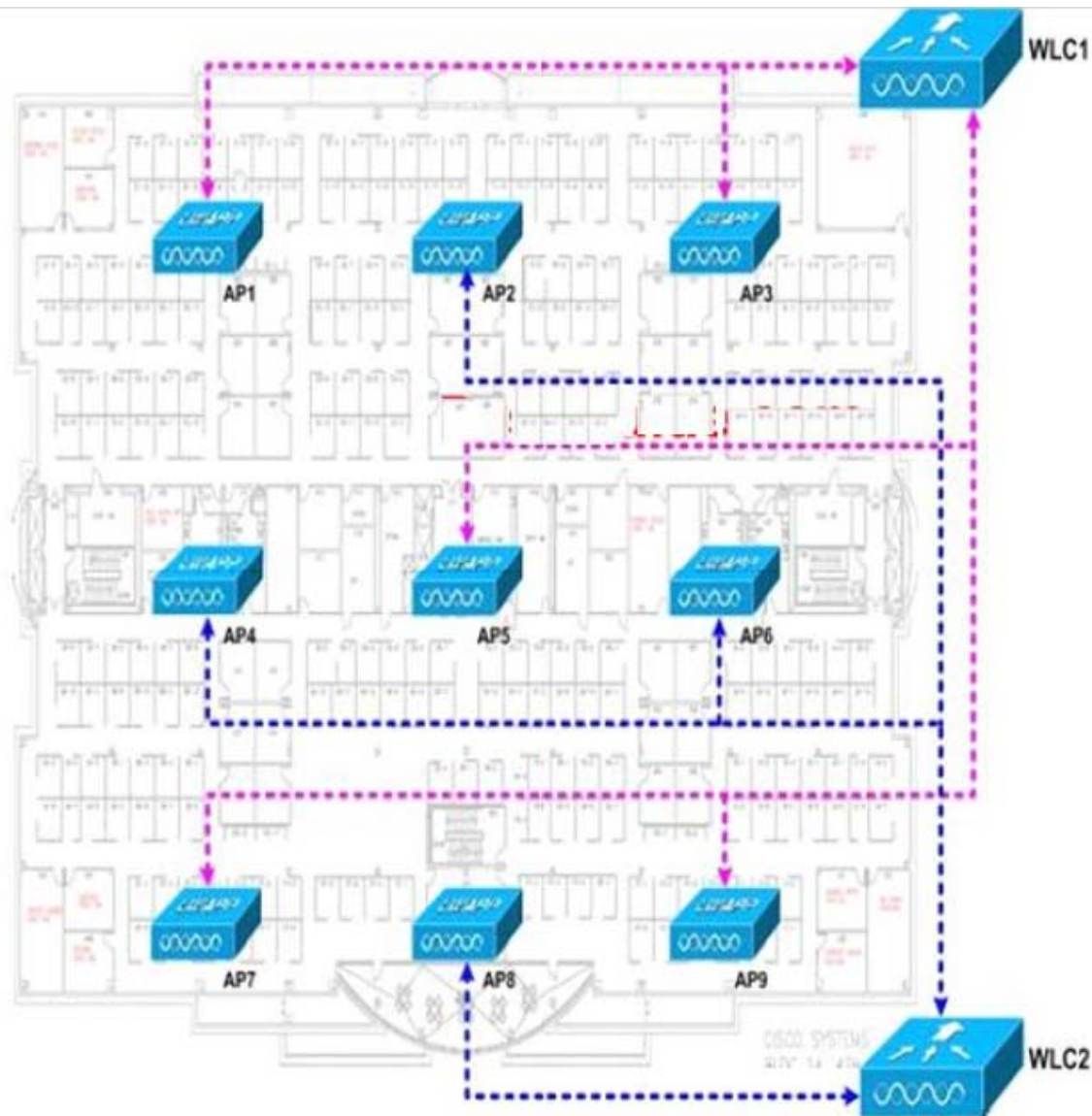
On your campus, you have a controller in each building and they are close enough that users can roam seamlessly between them. You have received several complaints that users in your main building are experiencing one-way audio problems when they walk into the central building. What is the cause of this issue?

- A. The client IP address is not in the routing table of the central building.
- B. The main building controller is blocking RTP packets inbound.
- C. A firewall is denying packets in one direction based on the source address.
- D. A firewall is blocking controller-to-controller traffic.

Answer: C

Question: 86

Refer to the exhibit. You have been tasked with deploying your company's wireless LWAPP deployment within an area that must have the best possible availability you can provide. Although a supported design, which disadvantage does the shown solution have?



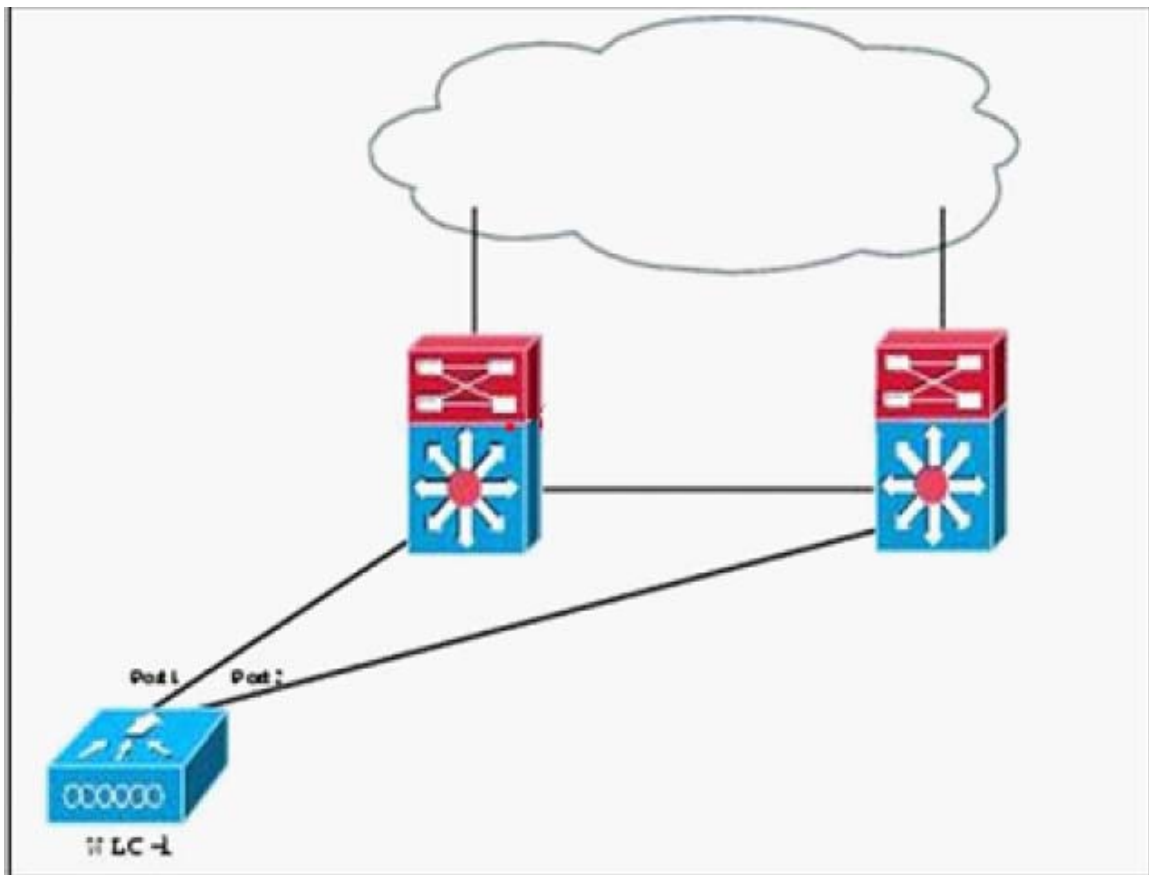
- A. a single point of failure at the IDF switch
- B. no client load-balancing
- C. frequent inter-controller roaming
- D. cannot support Voice overWiFi deployments

Answer: C

Question: 87

Refer to the exhibit. You have decided to use the individual ports in trunking on your Cisco 4402-50 controller. You have placed one port on each separate switch as shown and you have fully loaded 50 access points on this controller, placing 25 APs on each physical port and associated AP manager interface. During a power outage, you have lost one of these switches.

Your access layer is unaffected and all 50 access points still have power and attempt to move to the other physical port and rejoin the AP manager interface that remains up. How many access points will be able to connect to this controller? ²⁴



- A. All 50 APs will connect.
- B. All APs will try to rejoin the controller no matter what interface goes down.
- C. Each port can only support 48 APs and therefore 2 APs will not be able to join.
- D. Only 25 APs will remain joined and the other APs will look for another controller.

Answer: C

Question: 88

You are working in a global company. You have been tasked to configure two redundant controllers that are not specific for any one country. How many countries can you select per controller with the country feature using Cisco WLC version 5.2?

- A. 5
- B. 10
- C. 14
- D. 20

Answer: D

Question: 89

You have configured multiple country codes on your controller. You are using the Cisco WLC GUI to set the individual APs to the appropriate country code. How will this effect any associated clients on a changed AP?

- A. This is a minor change and no associations will be lost.

- B. The AP must be disabled so all clients will be disassociated.
- C. The clients will drop but immediately reassociate.
- D. The clients will remain associated until you click Apply and the AP will then reboot.

Answer: B

Question: 90

You have configured Symmetric Mobility with AES for mobility data encryption. Which UDP port does this mobility exchange use?

- A. 1701
- B. 16443
- C. 16666
- D. 16667

Answer: D



Download Full Version From <https://www.certkillers.net>



DON'T KNOW
OR NO PREFERENCE

Pass your exam at First Attempt....Guaranteed!