



# Alcatel lucent

4A0-102 Exam

**Alcatel-Lucent Border Gateway Protocol**

**Thank you for Downloading 4A0-102 exam PDF Demo**

**You can Buy Latest 4A0-102 Full Version Download**

<https://www.certkillers.net/Exam/4A0-102>

<https://www.certkillers.net>

---

**Question: 1**

---

Upon the successful establishment of a TCP session between peers, what type of BGP message is exchanged?

- A. OpenSent
- B. Keepalive
- C. Open
- D. Notification
- E. Update

---

**Answer: C**

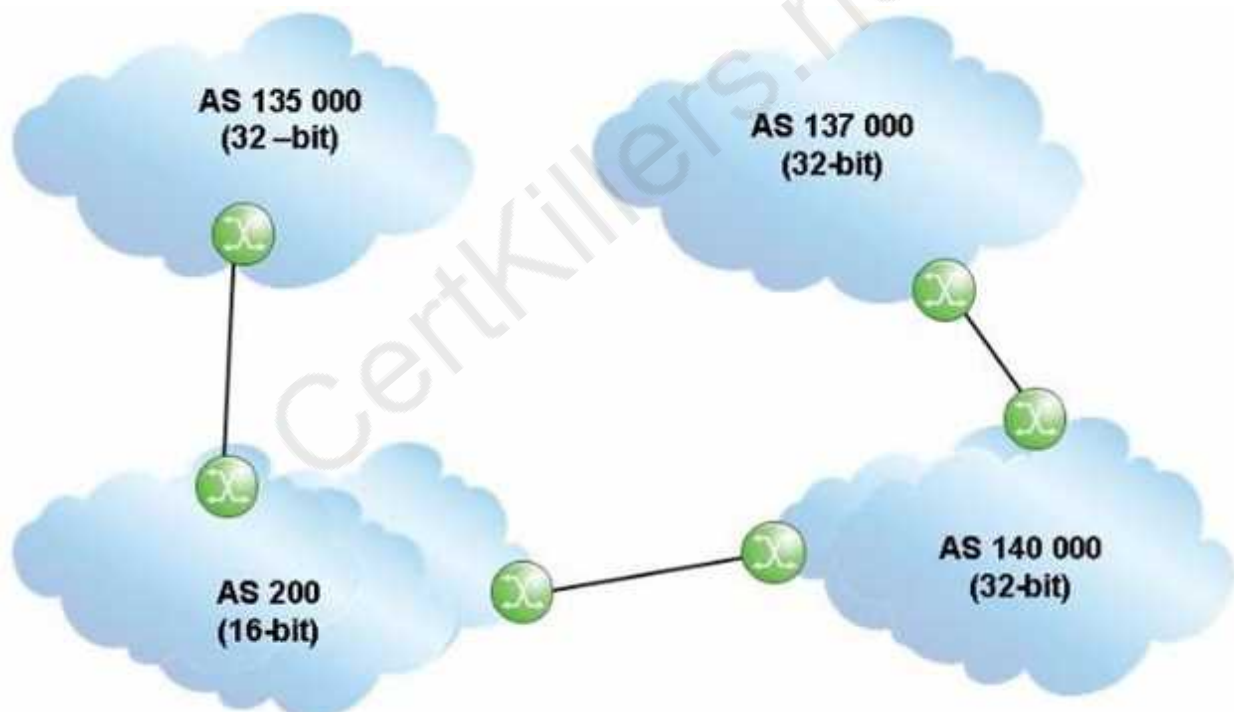
---

---

**Question: 2**

---

Click the exhibit.



An update travels from AS 135000 to AS 137000, traversing both 32-bit and 16-bit AS paths. What will the AS Path be when the update reaches AS 137000?

- A. 140000 200 135000
- B. 137000 140000 200 135000
- C. 140000 23456 135000
- D. 135000 200 140000

---

**Answer: A**

---



---

**Question: 3**

---

Which of the following is FALSE regarding the 16-bit public autonomous system numbers?

- A. They are allocated to the RIRs by ICANN/IANA.
- B. They are used when connecting ASs on the Internet.
- C. They range from 1 to 56319.
- D. They are assigned by the ISPs for enterprise networks.

---

**Answer: D**

---

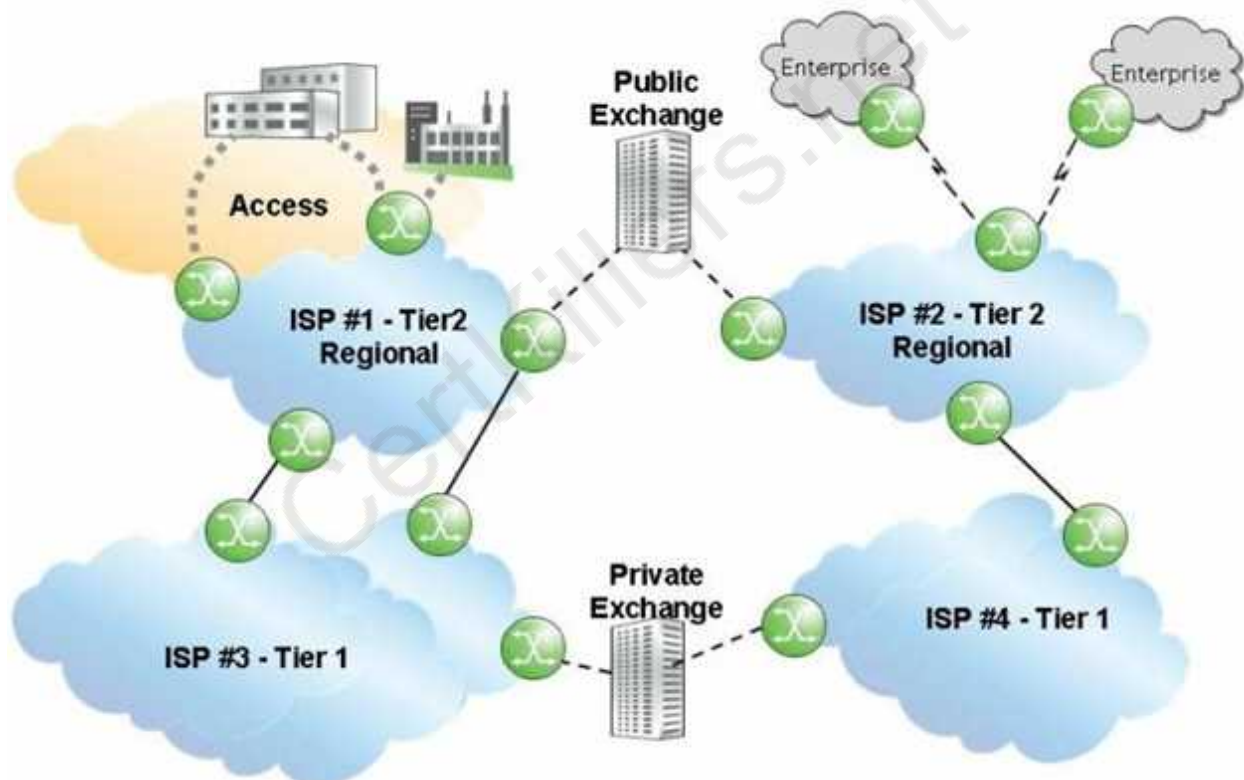


---

**Question: 4**

---

Click the exhibit.



Given that ISP 1 and ISP 2 are Tier 2 providers, and that ISP 3 and ISP 4 are Tier 1 providers, what is the most likely relationship between the ISPs?

- A. ISP 1 and ISP 2 have a public transit relationship, while ISP 3 and ISP 4 have a private transit relationship.
- B. ISP 1 and ISP 2 have a private transit relationship, while ISP 3 and ISP 4 have a public transit relationship.
- C. ISP 1 and ISP 2 have a private peering relationship, while ISP 3 and ISP 4 have a public peering relationship.

D. ISP 1 and ISP 2 have a public peering relationship, while ISP 3 and ISP 4 have a private peering relationship.

---

**Answer: D**

---

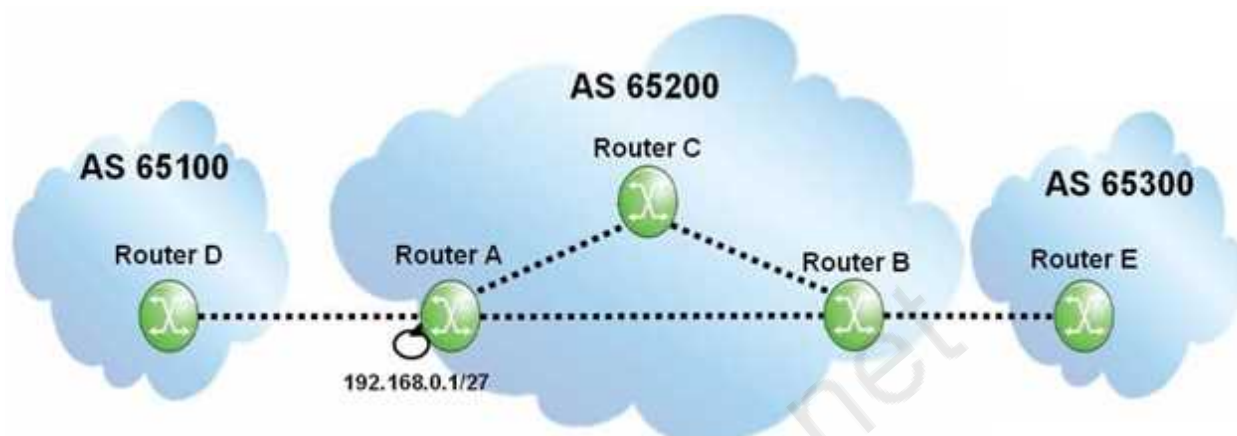


---

**Question: 5**

---

Click the exhibit.



If router A originates an update for prefix 192.168.0.1/27, what will the update contain when it reaches router B?

- A. AS Path of 65200, local-preference of 100.
- B. AS Path of 65200, local-preference of None.
- C. Null AS Path, local-preference of 100.
- D. Null AS Path, local-preference of None.

---

**Answer: C**

---



---

**Question: 6**

---

BGP is configured on two peers, routers A and B. Router A is configured with a Hold Time timer of 60 seconds and a Keepalive timer of 25 seconds. Router B is configured with a Hold Time timer of 90 seconds and a Keepalive timer of 70 seconds. What will the active Keepalive timer be on router B?

- A. 70 seconds
- B. 25 seconds
- C. 20 seconds
- D. 30 seconds

---

**Answer: C**

---



---

**Question: 7**

---

Which of the following statements regarding the Internet is FALSE?

- A. It is a global network relying on interconnections provided by Internet service providers.
- B. It is a continuous and interconnected set of public IP networks, advertised and shared across the globe.
- C. It is a settlement-free global network that provides interconnection between Internet service providers.
- D. It is a network that allows any Internet service provider to reach every other Internet service provider in the world.

---

**Answer: C**

---

---

**Question: 8**

---

Which of the following is the minimum requirement for an AS to be considered multi-homed?

- A. A single connection to a single service provider.
- B. Two connections to a single service provider.
- C. Two connections to two different service providers.
- D. Multiple connections to different service providers.

---

**Answer: B**

---

---

**Question: 9**

---

What are the well-known mandatory BGP attributes?

- A. Origin, Next Hop and Local Preference.
- B. Local preference, AS Path and Next Hop.
- C. Aggregator, Next Hop and AS Path.
- D. AS Path, Next Hop and Origin.

---

**Answer: D**

---

---

**Question: 10**

---

Which of the following best describes the relationship between locally configured policies and the direction of traffic?

- A. Import policies affect the way the local AS receives traffic, while export policies affect the way it sends traffic.
- B. Import policies affect the way the local AS sends traffic, while export policies affect the way it receives traffic.
- C. Both import and export policies affect the way the local AS receives traffic, but not the way it sends traffic.
- D. Both import and export policies affect the way the local AS sends traffic, but not the way it receives traffic.

---

**Answer: B**

---

---

**Question: 11**

---

What kind of BGP attribute is the Local Preference?

- A. Optional transitive attribute.
- B. Optional non-transitive attribute.
- C. Well-known mandatory attribute.
- D. Well-known discretionary attribute.

---

**Answer: D**

---

---

**Question: 12**

---

Which of the following is TRUE?

- A. There can only be one community associated with a route.
- B. Community is an optional non-transitive attribute.
- C. Community is an optional transitive attribute.
- D. Community is a well-known discretionary attribute.

---

**Answer: C**

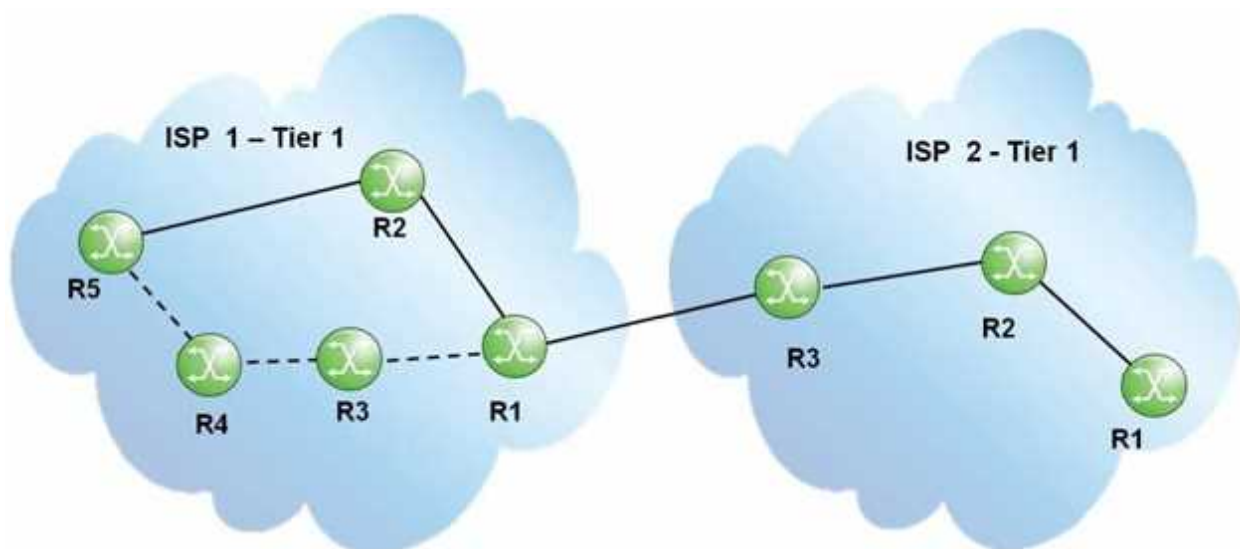
---

---

**Question: 13**

---

Click the exhibit.



**Legend**

	Physical Connection and IGP metric 10
	Physical Connection and IGP metric 100

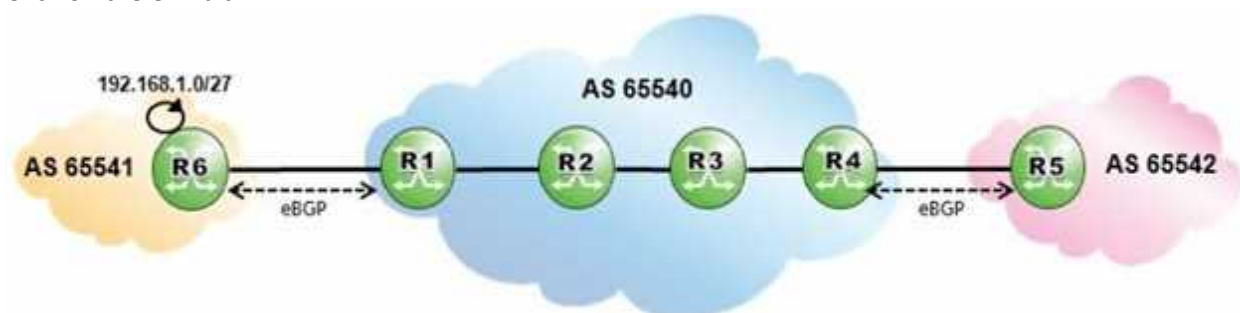
Assuming a full iBGP mesh in ISP 1, how does router R1 in ISP 1 handle a BGP update received from ISP 2?

- A. The update is sent to router R2 in ISP 1.
- B. The update is sent to routers R2 and R3 in ISP 1.
- C. The update is sent to all routers in ISP 1.
- D. The update is sent to routers R2 and R3 in ISP 1, and to router R3 in ISP 2.

**Answer: C**

**Question: 14**

Click on the exhibit.



AS 65540 is using MPLS to provide BGP shortcuts for its iBGP routing. Which routers must be configured with the "configure router bgp igp-shortcuts rsvp-te" command?

- A. Routers R6, R1, R4 and R5.

- B. Routers R1 and R4.
- C. Routers R1, R2, R3 and R4.
- D. Routers R2 and R3.

---

**Answer: B**

---

---

**Question: 15**

---

Which of the following is TRUE if the state of one BGP neighbor shows Active?

- A. The neighbor will send a Keepalive message.
- B. The router is trying to initiate a TCP connection to that neighbor.
- C. The router received an Open message with the correct parameters.
- D. The router is actively exchanging updates with that neighbor.

---

**Answer: B**

---

CertKillers.net



## Thank You for trying 4A0-102 PDF Demo

To Buy Latest 4A0-102 Full Version Download visit link below

<https://www.certkillers.net/Exam/4A0-102>

## Start Your 4A0-102 Preparation

**[Limited Time Offer]** Use Coupon “CKNET” for Further discount on your purchase. Test your 4A0-102 preparation with actual exam questions.

<https://www.certkillers.net>