



**Cisco**

**351-050**

*CCIE Wireless Beta Written*

**Answer: A**

**Question: 224**

You work as a network designer. You are tasked with designing a wireless network for a high-rise dormitory in New York City. Each floor is about 10,000 square feet with identical apartment layouts. You use the Cisco WCS planning tool to run the floor plan, and it is recommending three APs per floor. Which step is the next?

- A. Review physical locations for mounting APs
- B. Perform a physical site survey
- C. Decide which authentication method will be appropriate
- D. Prepare a Bill of Materials

**Answer: B**

**Question: 225**

Which one of the following issues is the RTS/CTS mechanism used to address in an 802.11b network?

- A. Hidden node problem
- B. Network Allocation Vector synchronization
- C. Bandwidth overload
- D. 802.11a compatibility

**Answer: A**

**Question: 226**

Tom is a network engineer. He has just been tasked with recommending an AP for use in the outdoor courtyard of a hospital that is already using controllers. The courtyard is 50 feet wide by 50 feet long, and is surrounded by brick walls. An outdoor network connection and AC power receptacle will be available near the only door to the courtyard. Which should be included in Tom's recommendation?

- A. Cisco Aironet 1522 Access Point with an omnidirectional antenna
- B. Cisco Aironet 1310 Access Point with no external antenna
- C. Cisco 3200 Series MARC with no external antenna
- D. Cisco Aironet 1242 Access Point with no external antenna

**Answer: B**

**Question: 227**

Which three parameters can be used in calculating the range of an outdoor link between two bridges? (Choose three.)

- A. Fresnel Zone diameter
- B. Antenna gain
- C. Cable length between bridge and antenna
- D. Bridge transmission power

**Answer: B, C, D**

**Question: 228**

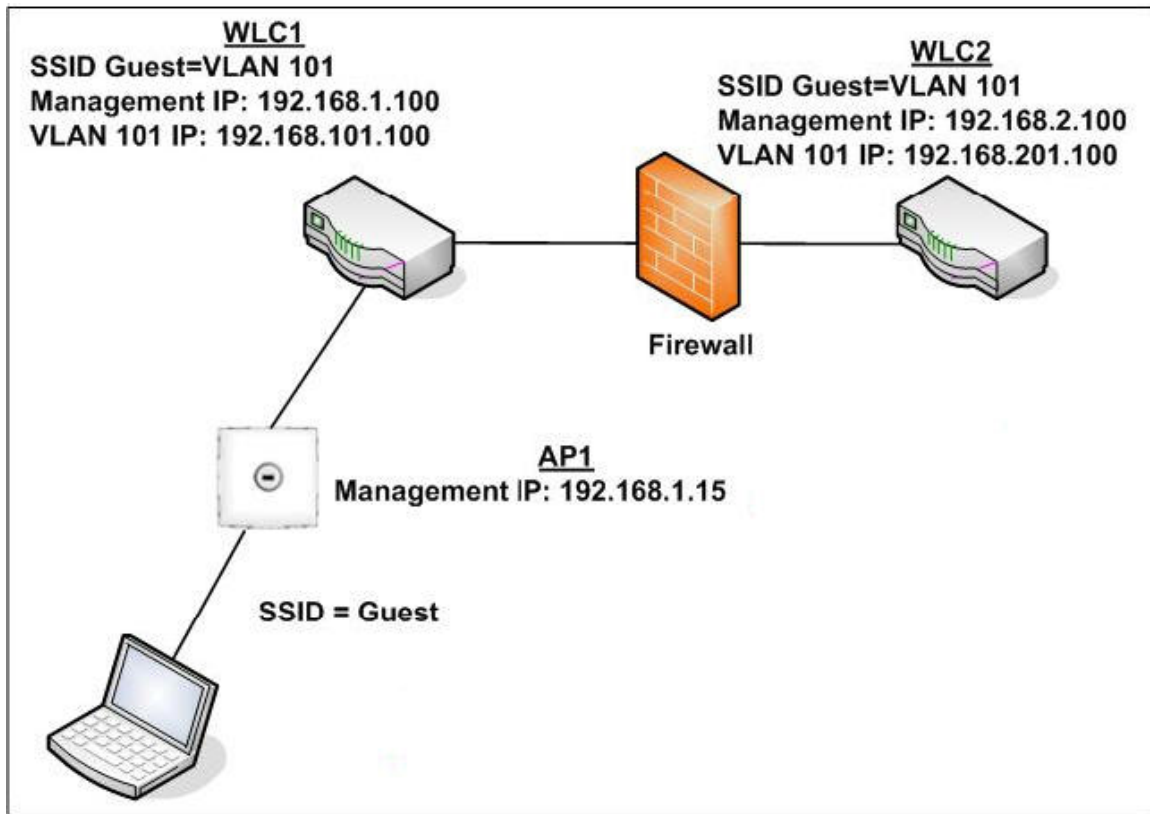
Which information is most important for you to obtain from the customer in order to correctly design a wireless network?

- A. Previous experience with the old wireless network
- B. Most active users on the network
- C. Critical applications that will run over the WLAN
- D. Issues concerning security breaches in the old security standards

**Answer: C**

**Question: 229**

According to the following exhibit, WLC1 is using WLC2 as a mobility anchor for the "Guest" WLAN. Which two traffic paths should be allowed through the firewall that sits between the two WLCs? (Choose two.)



- A. IP protocol 97 between 192.168.101.100 and 192.168.201.100.
- B. IP protocol 47 between 192.168.101.100 and 192.168.201.100.
- C. UDP ports 16666 and 16667 between 192.168.1.100 and 192.168.2.100.
- D. IP protocol 97 between 192.168.1.100 and 192.168.2.100.

**Answer: C, D**

**Question: 230**

Which characteristic of wireless LAN controller allows traffic from clients communicating with each other on the same SSID to be bridged, dropped, or forwarded at the wireless LAN controller?

- A. Multicast optimization
- B. HREAP

- C. Client bridge mode
- D. Peer-to-peer blocking

**Answer: D**

**Question: 231**

Which three functions will the access point in a Split-MAC architecture handle? (Choose three.)

- A. 802.11i encryption
- B. 802.11i key management
- C. 802.11e queuing
- D. Beacon generation

**Answer: A, C, D**

**Question: 232**

The Company university has 20 buildings and 10,000 students. It wants to implement a single SSID across the whole campus. On the basis of university policy, students in the auditorium should not have Internet access, because standardized testing will be carried out there. Which feature will be helpful for deploying the university's SSID?

- A. AP groups
- B. WLAN override
- C. MAC filtering
- D. AAA override

**Answer: A**

**Question: 233**

While configuring Wireless Domain Services, which port is used for traffic between infrastructure APs and the WDS AP?

- A. Generic Routing Encapsulation GRE which is IP Protocol 47
- B. UDP destination and source protocol port 1645 (0x066D)
- C. UDP destination and source protocol port 1812 (0x0714)
- D. UDP destination and source protocol port 2887 (0x0B47) or Ethernet Type 34605 (0x872D)

**Answer: D**

**Question: 234**

Which device controls Radio Resource Management in a centralized WLAN environment with multiple WLCs configured for mobility?

- A. The AP that wins the RF election
- B. The RF group leader
- C. All the controllers in the same mobility group
- D. The controller to which APs are currently registered

**Answer: B**

**Question: 235**

On the basis of a site survey report, 172 APs are required to meet the coverage needs. The IT Director insists on an N+1 controller redundancy design for the access points. In addition, the design should allow for growth of as much as 10% in the number of access points. What is the minimum WLAN controller configuration required to support these requirements?

- A. Four 4402 Wireless LAN Controllers
- B. Four 4404 Wireless LAN Controllers
- C. Three 4404 Wireless LAN Controllers
- D. One Cisco Wireless Service Module

**Answer: C**

**Question: 236**

For the following Cisco IOS features, which one allows an access point to broadcast more than one SSID?

- A. Guest mode
- B. MBSSID
- C. Broadcast key rotation
- D. BBSSID

**Answer: B**

**Question: 237**

Which standard should be met in order to ensure clients of H-REAP can maintain connectivity to the VLAN at a controller?

- A. The one-way-trip WAN delay should not exceed 100 milliseconds.
- B. WAN jitter should not exceed 10 microseconds.
- C. The round-trip WAN delay should not exceed 100 milliseconds.
- D. WAN jitter should not exceed 10 milliseconds.

**Answer: C**

**Question: 238**

Which properties are of an AP in H-REAP mode?

- A. Can switch client data traffic locally.
- B. Perform client authentication locally when its connection to the controller is lost.
- C. Support Cisco Centralized Key Management fast roaming.
- D. Allows some SSID/VLAN traffic to be switched locally while other SSID/VLAN traffic has full LWAPP functionality.

**Answer: A, B, C, D**

**Question: 239**

While using EAP type equal to PEAP with server-side TLS authentication, which option is correct?

- A. The ECU field is required in the server certificate on the RADIUS server.
- B. The RADIUS server must be compliant with Cisco Compatible Extensions.
- C. The issuer of the certificate is Microsoft.
- D. Private and public keys must be shared by the client, controller, and RADIUS server.

**Answer: A**

**Question: 240**

69

The 2.4-GHz wavelength is about 4.92 inches (12.5 cm), if you want to support diversity on a 2.4-GHz radio, at what distance is it recommended you put two separate antennas?

- A. 7.6 inches (19.30 cm)
- B. 12.2 inches (30.99 cm)
- C. 4.92 inches (12.5 cm)
- D. 24.6 inches (62.5 cm)

**Answer: C**

---

Download Full Version From <https://www.certkillers.net>



**DON'T KNOW**  
OR NO PREFERENCE

*Pass your exam at First Attempt....Guaranteed!*