



**Cisco**

**350-027**

*CCIE Written: Metro Ethernet*

**QUESTION: 378**

On a 3550 switch, private vlan edge is known as:

- A. Private Vlan
- B. Protected port
- C. Switch private vlan
- D. None of the above

**Answer: B**

**QUESTION: 379**

A network administrator is using debug commands to check the performance of a network. What steps can the administrator take to ensure that the "debug" will not require too much CPU, or at least that she will not have to reboot the router to disable debug? (multiple answer)

- A. Make the debug command as specific as possible
- B. Use the max-time parameter of the debug command
- C. In configuration mode, enter scheduler interval 15
- D. Configure a loopback to channel debug traffic

**Answer: A, C**

**QUESTION: 380**

Which are supported ways of transporting ATM over MPLS?

- A. AAL5 SDU VC Mode
- B. AAL5 SDU VP Mode
- C. Packet Cell Relay AAL5 Trunk Mode
- D. Packed Cell Relay Trunk mode
- E. AAL2oMPLS

**Answer: A, C**

**QUESTION: 381**

IEEE 802.1D describes a method to prevent the disconnection of a single end station from disruption Spanning Tree. What does the method describe?

- A. Re-setting the Topology Change flag to zero (0).
- B. Disabling the 801.1D Change Detection parameter.
- C. Configuring the BridgeForwardDelay to 1/2 of the BridgeMaxage.
- D. Using the BridgeForwardDelay timer to age out dynamic entries.

**Answer:** B

**QUESTION:** 382

The purpose of Administrative Distance, as used by Cisco routers, is:

- A. To choose between routes from different routing protocols when receiving updates for the same network
- B. To identify which routing protocol forwarded the update
- C. To define the distance to the destination used in deciding the best path
- D. To be used only for administrative purposes

**Answer:** A

**QUESTION:** 383

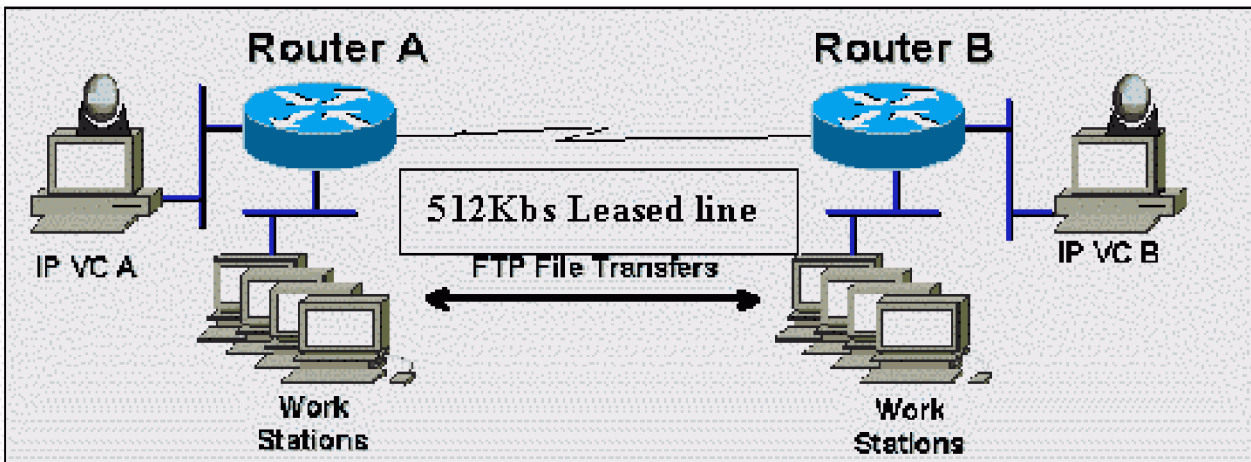
What is the protocol that On-Demand Routing relies on?

- A. IP
- B. TCP
- C. CDP
- D. UDP
- E. PPP

**Answer:** C

**QUESTION:** 384

Click the Exhibit button to view the topology. Assume IP Videoconference station A places a 384Kb call to IP Videoconference station B and the Workstations are transferring files back and forth between themselves during the same time period. What Cisco feature should be used on both routers to avoid unwanted jitter and guarantee the videoconference will get enough bandwidth for the duration of the call?



- A. Frame Relay Traffic Shaping (FRTS) with FRF.12 packet fragmentation
- B. Generic Traffic Shaping (GTS) with FECN Rate Adaptation activated
- C. Bandwidth Guarantee for Videoconferencing (BGV)
- D. Resource Reservation Protocol (RSVP)
- E. Weighted Fair Queuing (WFQ) with IP Precedence

**Answer:** D

**QUESTION:** 385

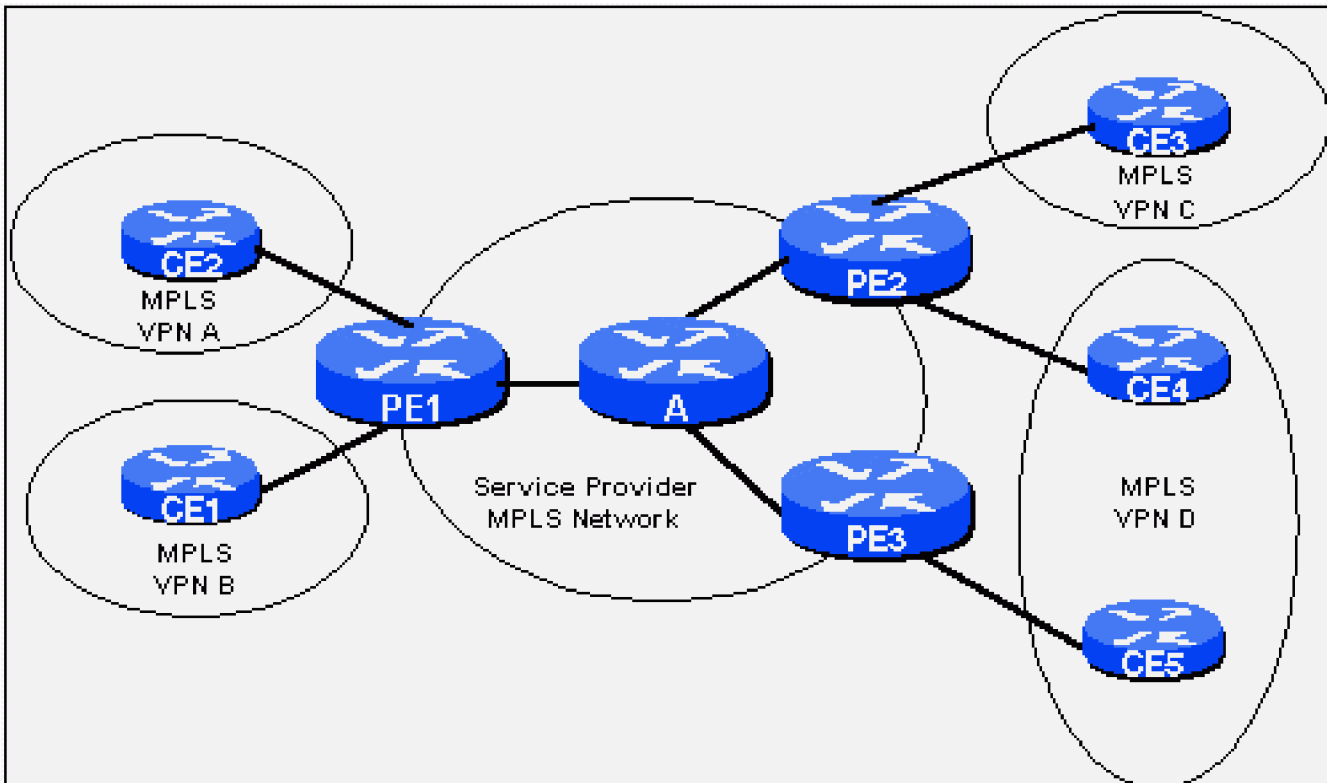
What protocol is used to exchange control information between active and standby supervisors in order to support redundancy?

- A. SCP
- B. SSP
- C. SLP
- D. CDP
- E. STP
- F. There is no such thing as a protocol between supervisor modules

**Answer:** C

**QUESTION:** 386

Click the Exhibit button to view the topology. In the MPLS network shown, how many routing tables are on Router A?



- A. 1
- B. 2
- C. 3
- D. 4
- E. 5

**Answer:** A

**QUESTION:** 387

When executing the following show mpls l2transport vc detail command, you notice the link does not come up. Choose the most likely cause.

```
PE#sho mpls l2transport vc detail
```

```
Local interface: Et0/0 up, line protocol up, Ethernet up Destination address: 172.168.1.102,
VC ID: 100, VC status: down Preferred path: not configured
```

```
Default path: active
```

```
Tunnel label: 16, next hop point2point
```

```
Output interface: Se5/0, imposed label stack {16 16} Create time: 00:18:10, last status
change time: 00:03:51
```

```
Signaling protocol: LDP, peer 172.168.1.102:0 up
```

```
MPLS VC labels: local 16, remote 16
```

```
Group ID: local 0, remote 0
```

MTU: local 1500, remote unknown

Remote interface description:

Sequencing: receive disabled, send disabled

VC statistics:

packet totals: receive 0, send 0 byte totals: receive 0, send 0 packet drops: receive 0, send 78

- A. MPLS is not enable from PE to P.
- B. The remote PE interface is down.
- C. TDP is configured instead of LDP.
- D. There is a remote side MTU mismatch.

**Answer:** D

**QUESTION:** 388

In a Distance Vector protocol, "counting to infinity":

- A. Calculates the time taken for a protocol to converge
- B. Checks to make sure the number of route entries do not exceed a set upper limit
- C. Counts the packets dropped during a routing loop
- D. Sets an upper limit for hop count, so that routing loops can be broken if this limit is reached
- E. Causes the router to enter an infinite loop and requires the router to be restarted

**Answer:** D

**QUESTION:** 389

What command should you use to modify MTUs on a 3550 switch?

- A. ip mtu x
- B. system mtu
- C. mtu x
- D. mpls mtu x
- E. ip tcp path-mtu-discovery

**Answer:** B

**QUESTION:** 390

CIDR is primarily used:

- A. In BGP only
- B. For classless routing

- C. In OSPF only
- D. In EIGRP only

**Answer:** B

**QUESTION:** 391

Which are two modes of Pseudowire Interworking?

- A. IP (routed) interworking
- B. ATM-FR (SNAP-NLPID) interworking
- C. Clear Channel interworking
- D. Ethernet (bridged) interworking
- E. There is no PW interworking

**Answer:** A, D

**QUESTION:** 392

Which statements are true regarding Interworking?

- A. Interworking is only supported in AToM.
- B. Interworking is supported in AToM and L2TPv3.
- C. Ethernet Interworking is only supported if one AC is ethernet or VLAN.
- D. FR-PPP is not supported.

**Answer:** B, C

**QUESTION:** 393

Which are components of VPLS?

- A. BGP extensions
- B. Pseudowire technology
- C. LDP extensions
- D. Etherchannel technology
- E. MAC Address learning and forwarding on a virtual port

**Answer:** A, B, E

**QUESTION:** 394

What is Forwarding Equivalence Class assignment NOT likely to be based upon?

- A. Fragment offset
- B. Destination address
- C. Application protocol
- D. Class of service

**Answer:** A

**QUESTION:** 395

Which statements are true regarding the 'preferred-path' pseudowire command?

- A. It can be used with an interface, an IP address or an access-list.
- B. When used with an IP address, the peer is a remote PE loopback.
- C. When used with an IP address, the peer is the IGP next hop.
- D. There must be an LSP destined to the IP address used.
- E. There must be a TE-Tunnel LSP destined to the IP address used.

**Answer:** B, D

**QUESTION:** 396

What is the recommended percentage for priority queue when configuring Low Latency Queuing?

- A. 50%
- B. 33%
- C. 40%
- D. 10%

**Answer:** B

**QUESTION:** 397

What is most commonly used to prevent hackers from flooding a port with MAC-addresses?

- A. BPDU Guard
- B. 802.x
- C. Port Security
- D. Storm Control
- E. Switch Port protected

**Answer:** C



**QUESTION:** 398

What command would you use on a 7600 switch to enable link-usage based load balancing for AToM VC?

- A. mpls load-balance per-label
- B. mpls ldp maxhops 2
- C. ip cef load-sharing algorithm original
- D. mpls load-balance per-l2transport-circuit
- E. ip cef load-sharing algorithm tunnel

**Answer:** A

**QUESTION:** 399

What standard defines the STP algorithm?

- A. IEEE 802.1D
- B. IEEE 802.11
- C. IEEE 802.1q
- D. ITU Q.2727-STP
- E. IETF RFC1483

**Answer:** A

**QUESTION:** 400

FRTP stands for:

- A. Frame Relay Top Pseudowire
- B. Frame Relay Traffic Pseudowire
- C. Frame Relay Traffic Policy
- D. Frame Relay Traffic Policing
- E. None of the above

**Answer:** D

Download Full Version From <https://www.certkillers.net>



**DON'T KNOW**  
OR NO PREFERENCE

*Pass your exam at First Attempt....Guaranteed!*