



Oracle

1Z0-632 Exam

PeopleSoft PeopleTools 8.5x Implementation Essentials Exam

Thank you for Downloading 1Z0-632 exam PDF Demo

You can Buy Latest 1Z0-632 Full Version Download

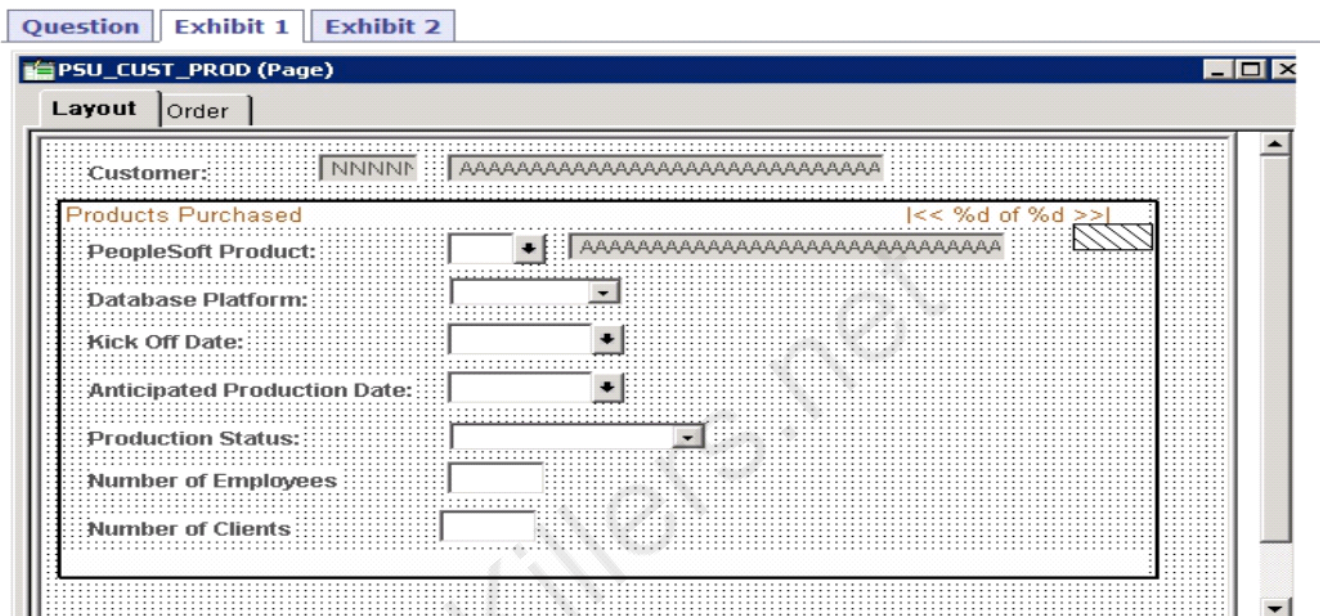
<https://www.certkillers.net/Exam/1Z0-632>

<https://www.certkillers.net>

Version: 9.0

Question: 1

View the exhibits.



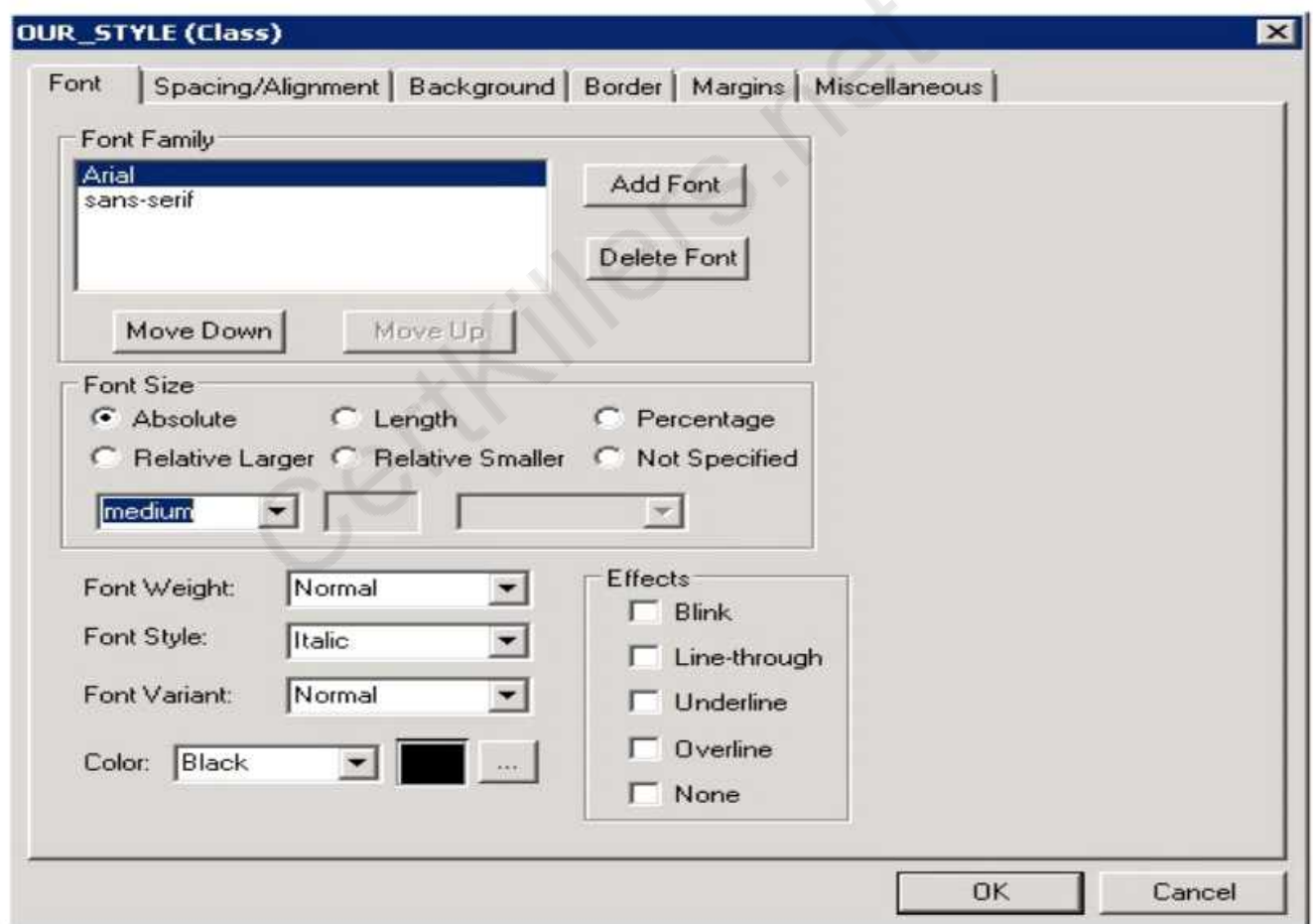
Based on the page layout, what is wrong with the search page and how should you fix it?

- A. The Add actions should not be available; check the component definition for the Item Label
- B. Include History and Correction should be displayed; check the Internet tab of the Component Properties dialog box
- C. The Add action should not be available; check the Internet tab of the Component Properties dialog box
- D. Include History and Correction should be displayed; check the Use tab of the Component Properties dialog box
- E. The Add action should not be available; check the Use tab of the Component Properties dialog box

Answer: D

Question: 2

A colleague needs to update a custom cascading style sheet (CSS) style for your team's fluid application. She has the style definition shown in this exhibit open in Application Designer, but isn't sure if she has opened the correct style definition and asks for your advice.



How do you know she does not have a fluid CSS style open?

- A. The fluid user interface does not use the Arial or the sans-serif fonts. The fluid user interface uses only the Lucida Grande and Helvetica Neue fonts
- B. In the fluid user interface, font color is not set on the style definition. The current branding theme

is what determines the font color for the fluid user interface display

C. The fluid user interface does not use absolute font sizes. Only relative font sizes apply to the dynamic nature of the fluid user interface

D. The fluid user interface uses only free form style sheets, and this style sheet is a fixed form style sheet

E. Fluid style sheets all have _FL appended to the style name

Answer: D

Question: 3

Examine this PeopleCode program excerpt:

```
class OCP_ROWSET extends Rowset
    property integer FilledRowCount get;
    method OCP_ROWSET(&strRecName As string, &strDataFld As string, &strGetOrCreate As
string);
    method InsertRow(&iRow As integer) Returns boolean;
end-class;
```

Select the three correct statements. (Choose three.)

A. The OCP_ROWSET method runs automatically whenever an object is instantiated from the OCP_ROWSET class

B. OCP_ROWSET is the constructor method for the OCP_ROWSET class

C. Executing the RO_ROWSET method instantiates an object of the OCP_ROWSET class

D. The OCP_ROWSET method must initialize an object of the Rowset class

E. The OCP_ROWSET method is added to the Rowset class, and, by extension, to any instances of the Rowset class

Answer: A,B,D

Question: 4

Which three actions occur during the component build process? (Choose three.)

A. Component record RowInit PeopleCode runs

B. Record field FieldFormula PeopleCode runs

C. Component record RowInsert PeopleCode runs

D. All component-level PeopleCode runs

E. Record field RowInsert PeopleCode runs

F. Record field RowInit PeopleCode runs

G. All rows in the record are loaded into the component buffer

Answer: B,C,D

Question: 5

You receive the following memo:

We need a new field to store skills. At the present time, we have identified five skills; however, this will likely increase in the future. Each skill will have a three-character code and a description. We want the skill to be searchable by the description.

How would you create this field?

- A. Create a three-character field for SKILL and add translate values for the initial five skills defined. When you add the field to the record, set it up as an alternate search key and translate table edit
- B. Create a three-character field for SKILL and then create a Skills table with two fields: SKILL and DESCR. When you add the field to the record, set it up as a prompt table edit referencing the Skills table
- C. Create a three-character field for SKILL and then create a Skills table with two fields: SKILL and DESCR. When you add the field to the record, set it up as an alternate search key and prompt table edit referencing the Skills table
- D. Create a three-character field for SKILL and add translate values for the initial five skills defined. When you add the field to the record, set it up as a translate table edit

Answer: D

Question: 6

You have a CUSTOMER_CONTACT page that uses a subpage that groups commonly used fields. The subpage is also used on the VENDOR_CONTACT page and the EMPLOYEE_CONTACT page.

Customers have unanimously requested that the fields in the subpage be displayed on a grid format on the CUSTOMER_CONTACT page, as opposed to the current display of individual edit boxes. Your product manager has asked you to identify a solution to this request that is the quickest, the most efficient, has the least impact on other pages, and is technically possible.

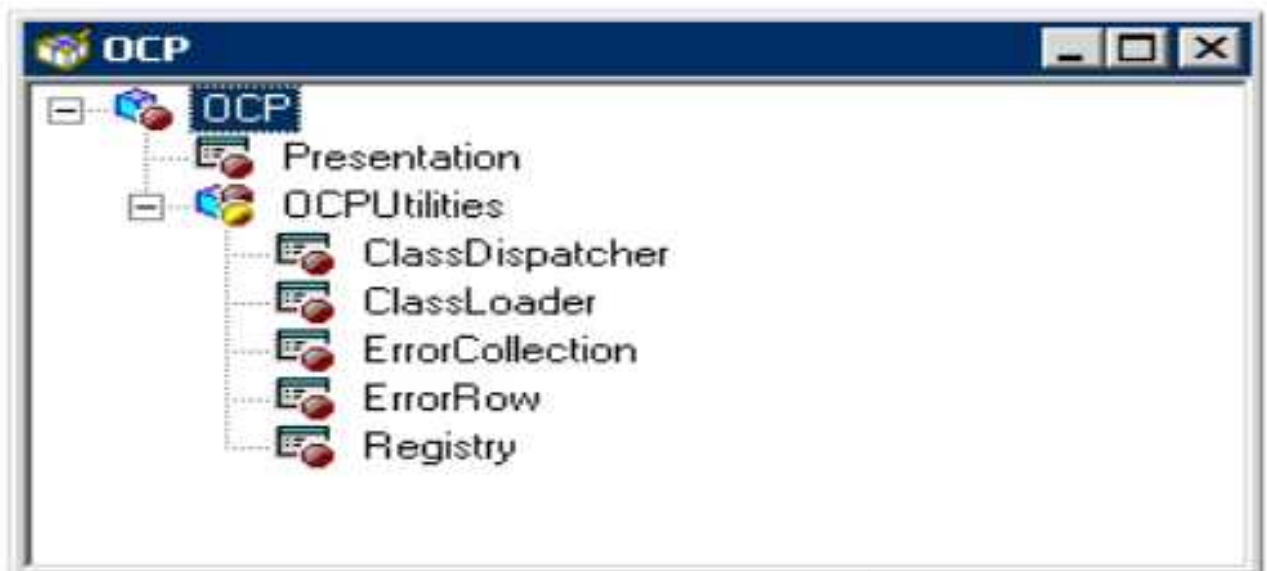
Which of these options best satisfies these requirements?

- A. Organize an effort to seek agreement from the owners of the VENDOR_CONTACT page and the EMPLOYEE_CONTACT page regarding your proposed addition of the grid control to the subpage, in addition to a testing plan and deployment plan.
- B. Modify just the CUSTOMER_CONTACT page by inserting a grid control and dragging the subpage onto the grid
- C. Modify just the subpage by removing the edit boxes, adding a grid control, and then adding the equivalent fields to the grid control
- D. Modify just the CUSTOMER_CONTACT page by removing the subpage, adding a grid control, and then adding the equivalent fields individually to the grid control

Answer: D

Question: 7

Review the following definition:



Select the correct PeopleCode statement to declare an object of the ErrorRow class.

- A. Component OCP:OCPUtilities: ErrorRow &NewObject
- B. Component &NewObject extends ErrorRow;
- C. Row OCP:OCPUtilities:ErrorRow &NewObject;
- D. &NewObject = create OCP:OCPUtilities:ErrorRow();
- E. &NewObject = Get (OCP:OCPUtilities:ErrorRow);
- F. Component OCP.OCPUtilities.ErrorRow &NewObject

Answer: A

Question: 8

Input	Output
Dr. Jane Smith, Ph.D.	Dr. Jane Smith
Mark Larsen, B.A.	Mark Larsen
Dr. Gustavo Hinojosa, M.D.	Dr. Gustavo Hinojosa
Vivek Patel, B.S.	Vivek Patel
Jonathan Marsh, M.B.A.	Jonathan Marsh

Which PeopleCode program will take the input student name values and produce the output values?

A

```
&comma_pos = Find(",", &student);  
&out = Substring(&student, 1, &comma_pos - 1);
```

B

```
&out = LTrim(&student, ",");
```

C

```
&out = RTrim(&student, ",");
```

D

```
&out = LTrim(&student, ",. ABDMPSh");
```

E

```
&comma_pos = Find(",", &student);  
&length = Len(&student);  
&out = Substring(&student, 1, &length - &comma_pos);
```

F

```
&out = RTrim(&student, ",. ABDMPSh");
```

- A. Option A
- B. Option B
- C. Option C
- D. Option D
- E. Option E
- F. Option F

Answer: D

Thank You for trying 1Z0-632 PDF Demo

To Buy Latest 1Z0-632 Full Version Download visit link below

<https://www.certkillers.net/Exam/1Z0-632>

Start Your 1Z0-632 Preparation

[Limited Time Offer] Use Coupon “CKNET” for Further discount on your purchase. Test your 1Z0-632 preparation with actual exam questions.

<https://www.certkillers.net>