



# CheckPoint

156-315.77 Exam

**CheckPoint Check Point Certified Security Expert Exam**

Thank you for Downloading 156-315.77 exam PDF Demo

You can Buy Latest 156-315.77 Full Version Download

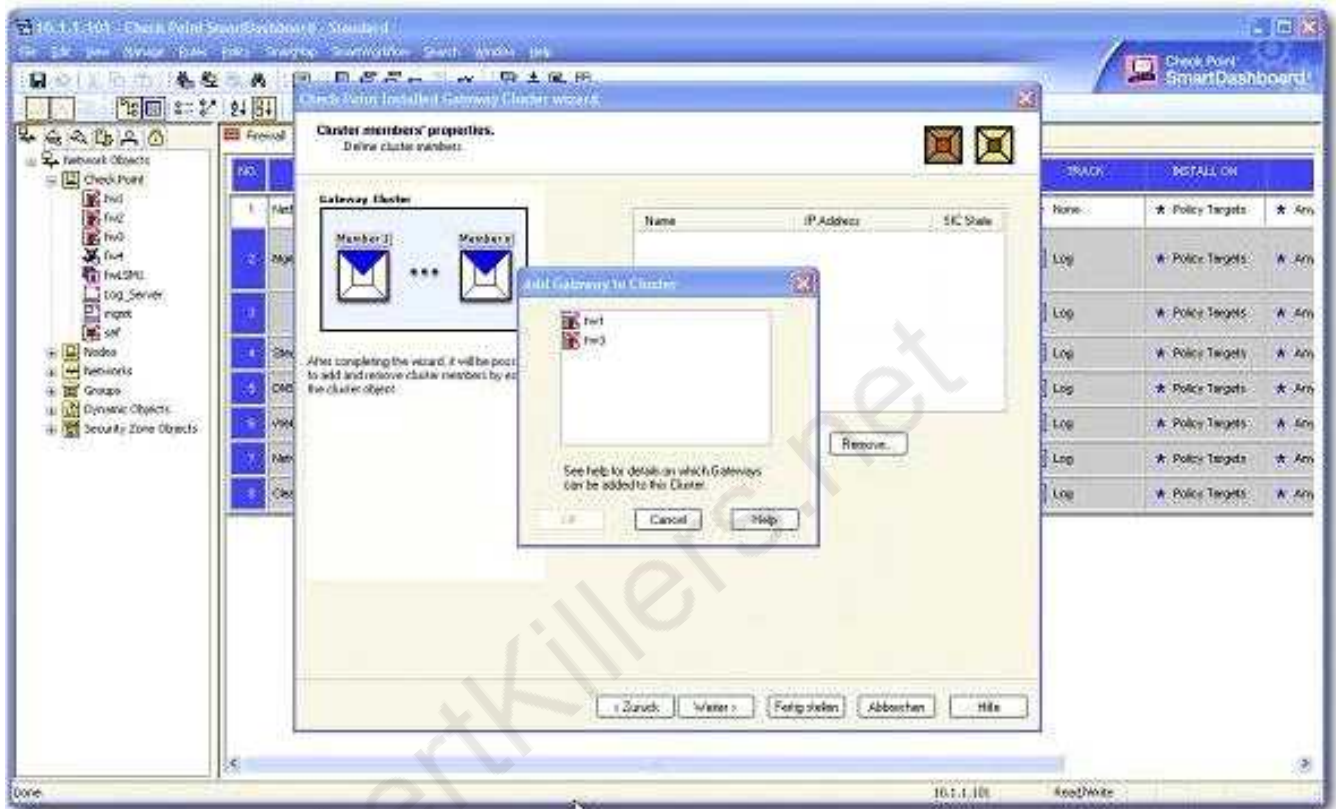
<https://www.certkillers.net/Exam/156-315.77>

<https://www.certkillers.net>

## Version: 10.0

### Question: 1

You find that Gateway fw2 can NOT be added to the cluster object.



- (i) fw2 is a member in a VPN community.
- (ii) ClusterXL software blade is not enabled on fw2.
- (iii) fw2 is a DAIP Gateway.

What are possible reasons for that?

- 1) fw2 is a member in a VPN community.
- 2) ClusterXL software blade is not enabled on fw2.
- 3) fw2 is a DAIP Gateway.

- A. 2 or 3
- B. 1 or 2
- C. 1 or 3
- D. All

**Answer: C**

---

**Question: 2**

---

Which is the lowest Gateway version manageable by SmartCenter R77?

- A. R65
- B. S71
- C. R55
- D. R60A

---

**Answer: A**

---

---

**Question: 3**

---

A ClusterXL configuration is limited to \_\_\_\_\_ members.

- A. There is no limit.
- B. 16
- C. 8
- D. 2

---

**Answer: C**

---

---

**Question: 4**

---

CORRECT TEXT

Fill in the blank. The command that typically generates the firewall application, operating system, and hardware specific drivers is \_\_\_\_\_.

---

**Answer: snapshot**

---

---

**Question: 5**

---

When a packet is flowing through the security gateway, which one of the following is a valid inspection path?

- A. Acceleration Path
- B. Small Path
- C. Firewall Path
- D. Medium Path

---

**Answer: D**

---

---

**Question: 6**

---

If your firewall is performing a lot of IPS inspection and the CPUs assigned to fw\_worker\_thread are at or near 100%, which of the following could you do to improve performance?

- A. Add more RAM to the system.
- B. Add more Disk Drives.
- C. Assign more CPU cores to CoreXL
- D. Assign more CPU cores to SecureXL.

---

**Answer: C**

---

---

**Question: 7**

---

What is Check Point's CoreXL?

- A. A way to synchronize connections across cluster members
- B. TCP-18190
- C. Multiple core interfaces on the device to accelerate traffic
- D. Multi Core support for Firewall Inspection

---

**Answer: D**

---

---

**Question: 8**

---

The challenges to IT involve deployment, security, management, and what else?

- A. Assessments
- B. Maintenance
- C. Transparency
- D. Compliance

---

**Answer: D**

---

---

**Question: 9**

---

What is the offline CPSIZEME upload procedure?

- A. Find the cpsizeme\_of\_<gwname>.pdf, attach it to an e-mail and send it to cpsizeme\_upload@checkpoint.com
- B. Use the webbrowser version of cpsizeme and fax it to Check Point.
- C. Find the cpsizeme\_of\_<gwname>.xml, attach it to an e-mail and send it to cpsizeme\_upload@checkpoint.com
- D. There is no offline upload method.

---

**Answer: C**

---

---

**Question: 10**

---

How frequently does CPSIZEME run by default?

- A. weekly
- B. 12 hours
- C. 24 hours
- D. 1 hour

---

**Answer: C**

---

---

**Question: 11**

---

How do you run "CPSIZEME" on SPLAT?

- A. [expert@HostName]#>./cpsizeme -h
- B. [expert@HostName]# ./cpsizeme -R
- C. This is not possible on SPLAT
- D. [expert@HostName]# ./cpsizeme

---

**Answer: D**

---

---

**Question: 12**

---

How do you upload the results of "CPSIZEME" to Check Point when using a PROXY server with authentication?

- A. [expert@HostName]# ./cpsizeme.exe -a username:password@proxy\_address:port
- B. [expert@HostName]# ./cpsizeme -p username:password@proxy\_address:port
- C. [expert@HostName]# ./cpsizeme -a username:password@proxy\_address:port
- D. [expert@HostName]# ./cpsizeme.exe -p username:password@proxy\_address:port

---

**Answer: B**

---

---

**Question: 13**

---

Can the smallest appliance handle all Blades simultaneously?

- A. Depends on the number of protected clients and throughput.
- B. Depends on number of concurrent sessions.
- C. Firewall throughput is the only relevant factor.
- D. It depends on required SPU for customer environment.

---

**Answer: D**

---

---

**Question: 14**

---

Which statements about Management HA are correct?

- 1) Primary SmartCenter describes first installed SmartCenter
- 2) Active SmartCenter is always used to administrate with SmartConsole

- 3) Active SmartCenter describes first installed SmartCenter  
4) Primary SmartCenter is always used to administrate with SmartConsole

- A. 1 and 4  
B. 2 and 3  
C. 1 and 2  
D. 3 and 4

---

**Answer: C**

---

---

**Question: 15**

---

Which of the following is NOT an advantage of SmartLog?

- A. SmartLog has a “Top Results” pane showing things like top sources, rules, and users.  
B. SmartLog displays query results across multiple log files, reducing the need to open previous files to view results.  
C. SmartLog requires less disk space by consolidating log entries into fewer records.  
D. SmartLog creates an index of log entries, increasing query speed.

---

**Answer: C**

---

---

**Question: 16**

---

Exhibit:

```
Cluster Mode: New High Availability (Primary Up)

Number      Unique IP Address    Assigned Load    State
1 (local)   192.168.1.1          0%               standby
2           192.168.1.2          100%             active
```

From the following output of cphaprob state, which ClusterXL mode is this?

- A. Unicast mode  
B. Multicast mode  
C. New mode  
D. Legacy mode

---

**Answer: A**

---

---

**Question: 17**

---

Which of the following is NOT a feature of ClusterXL?

- A. Transparent upgrades
- B. Zero downtime for mission-critical environments with State Synchronization
- C. Enhanced throughput in all ClusterXL modes (2 gateway cluster compared with 1 gateway)
- D. Transparent failover in case of device failures

---

**Answer: C**

---

ClusterXL provides:

---

**Question: 18**

---

In which case is a Sticky Decision Function relevant?

- A. Load Balancing – Forward
- B. High Availability
- C. Load Sharing – Multicast
- D. Load Sharing – Unicast

---

**Answer: C**

---

---

**Question: 19**

---

What is NOT a valid LDAP use in Check Point SmartDirectory?

- A. Retrieve gateway CRL's
- B. Enforce user access to internal resources
- C. External users management
- D. Provide user authentication information for the Security Management Server

---

**Answer: B**

---

---

**Question: 20**

---

There are several SmartDirectory (LDAP) features that can be applied to further enhance SmartDirectory (LDAP) functionality, which of the following is NOT one of those features?

- A. Support many Domains under the same account unit
- B. Support multiple SmartDirectory (LDAP) servers on which many user databases are distributed
- C. High Availability, where user information can be duplicated across several servers
- D. Encrypted or non-encrypted SmartDirectory (LDAP) Connections usage

---

**Answer: A**

---

---

**Question: 21**

---

Choose the BEST sequence for configuring user management in SmartDashboard, using an LDAP

server.

- A. Configure a server object for the LDAP Account Unit, and create an LDAP resource object.
- B. Configure a workstation object for the LDAP server, configure a server object for the LDAP Account Unit, and enable LDAP in Global Properties.
- C. Configure a server object for the LDAP Account Unit, enable LDAP in Global Properties, and create an LDAP resource object.
- D. Enable LDAP in Global Properties, configure a host-node object for the LDAP server, and configure a server object for the LDAP Account Unit.

---

**Answer: D**

---

---

**Question: 22**

---

The User Directory Software Blade is used to integrate which of the following with a R77 Security Gateway?

- A. UserAuthority server
- B. RADIUS server
- C. Account Management Client server
- D. LDAP server

---

**Answer: D**

---

---

**Question: 23**

---

Your users are defined in a Windows 2008 Active Directory server. You must add LDAP users to a Client Authentication rule. Which kind of user group do you need in the Client Authentication rule in R77?

- A. LDAP group
- B. All Users
- C. External-user group
- D. A group with a generic user

---

**Answer: A**

---

---

**Question: 24**

---

Which of the following commands do you run on the AD server to identify the DN name before configuring LDAP integration with the Security Gateway?

- A. dsquery user -name administrator
- B. query ldap -name administrator
- C. ldapquery -name administrator
- D. cpquery -name administrator



---

**Answer: A**

---

---

**Question: 25**

---

In SmartDirectory, what is each LDAP server called?

- A. Account Server
- B. LDAP Unit
- C. Account Unit
- D. LDAP Server

---

**Answer: C**

---

---

**Question: 26**

---

When defining SmartDirectory for High Availability (HA), which of the following should you do?

- A. Configure Secure Internal Communications with each server and fetch branches from each.
- B. Replicate the same information on multiple Active Directory servers.
- C. Configure a SmartDirectory Cluster object.
- D. Configure the SmartDirectory as a single object using the LDAP cluster IP. Actual HA functionality is configured on the servers.

---

**Answer: B**

---

---

**Question: 27**

---

The set of rules that governs the types of objects in the directory and their associated attributes is called the:

- A. Schema
- B. SmartDatabase
- C. Access Control List
- D. LDAP Policy

---

**Answer: A**

---

---

**Question: 28**

---

When using SmartDashboard to manage existing users in SmartDirectory, when are the changes applied?

- A. At database synchronization
- B. Instantaneously
- C. Never, you cannot manage users through SmartDashboard

D. At policy installation

---

**Answer: B**

---

---

**Question: 29**

---

Where multiple SmartDirectory servers exist in an organization, a query from one of the clients for user information is made to the servers based on a priority. By what category can this priority be defined?

- A. Location or Account Unit
- B. Gateway or Domain
- C. Gateway or Account Unit
- D. Location or Domain

---

**Answer: C**

---

---

**Question: 30**

---

Each entry in SmartDirectory has a unique \_\_\_\_\_.

- A. Container
- B. Distinguished Name
- C. Organizational Unit
- D. Schema

---

**Answer: B**

---

## Thank You for trying 156-315.77 PDF Demo

To Buy Latest 156-315.77 Full Version Download visit link below

<https://www.certkillers.net/Exam/156-315.77>

## Start Your 156-315.77 Preparation

**[Limited Time Offer]** Use Coupon “CKNET” for Further discount on your purchase. Test your 156-315.77 preparation with actual exam questions.

<https://www.certkillers.net>